



Innovative Aluminum Systems Inc. Infinity Topless Railing Systems

Engineering Review for Compliance with Canadian Building Codes Part 9

May 30, 2017

RJC No. VAN.117486.0001

Revision #1

Prepared for:

Innovative Aluminum Systems Inc.
26730 56th Avenue, Suite 306
Aldergrove BC V4W 3X5

Prepared by:

Read Jones Christoffersen Ltd.
1285 West Broadway, Suite 300
Vancouver BC V6H 3X8



Table of Contents

1.0	OVERVIEW	1
2.0	INFILL ELEMENTS	1
3.0	RAIL ELEMENTS	2
4.0	CONNECTORS	2
5.0	RESULTS	2
6.0	CONCLUSION	3

APPENDIX A: ASSEMBLY DRAWINGS



1.0 OVERVIEW

The Infinity Topless Railing System by Innovative Aluminum Systems Inc. (IAS) is intended to act as a guard or barrier to protect the public from a fall. The objectives are to complete a structural review of the structural components based on Limit States Design, in accordance with applicable material standards and Part 9 of the following Canadian building codes:

- Alberta Building Code 2014
- British Columbia Building Code 2012
- National Building Code of Canada 2015
- Ontario Building Code 2012

The following specified loads apply (1 and 2 dwelling units):

- Concentrated lateral load of 1 kN (applied at top of guard)
- Uniformly distributed lateral load of 0.50 kN/m (applied at top of guard)
- Uniformly distributed vertical load of 1.5 kN/m (applied at top of guard)
- Concentrated infill load of 0.5kN (anywhere within the guard)
- Wind load (applied on glass surface)

2.0 INFILL ELEMENTS

The primary infill element includes 12 mm tempered laminated glass (2 layers of 6 mm tempered glass with a 1.52 mm PVB interlayer).

Our analysis was based on the following information:

- Loads: Prescribed by the Canadian building codes (See Section 1.0, Overview) and CSA A500-16 Building Guards.
- Resistance: Completed in accordance with ASTM E1300-12a.
- Material: Tempered glass in accordance with CAN/CGSB-12.1-M90.
- Load configuration: As shown on assembly drawings. The glass panels were analyzed based on having pinned (simply-supported) ends along the posts.
- Allowable deflection: The allowable deflection is 40mm, per CAN/CGSB 12.20-M89, Structural Design of Glass for Buildings.



3.0 RAIL ELEMENTS

The rail elements include the posts. An analysis was completed based on the worst-case configuration for these elements.

- Loads: Prescribed by the Canadian building codes. See Section 1.0, Overview.
- Resistance: Completed in accordance with CAN/CSA S157-05 (R2015), Strength in Aluminum Design.
- Section properties: Determined from drawings provided by IAS. Calculations were completed in accordance with CAN/CSA S157-05 (R2015).
- Load configuration: Span and dimensions as shown assembly drawings. Posts were modeled as cantilevers, fixed at the base. The results from our analysis show the maximum span that can be achieved, as calculated from the material fastener and glass resistances.

4.0 CONNECTORS

The connectors include the connection between the post and the base plate. An analysis was completed based on the worst-case configuration for these elements. Connections, including but not limited to base plate connections to the base building are not included as part of this review.

- Loads: Prescribed by the Canadian building codes. See Section 1.0, Overview.
- Resistance: Completed in accordance with CAN/CSA S157-05 (R2015), Strength in Aluminum Design, CAN/CSA S136-16, Design of Cold Formed Steel and CAN/CSA S16-14, Design of Steel Structures.
- Section properties: Determined by drawings provided by IAS. Calculations were completed in accordance with CAN/CSA S157-05 (R2015).
- Load configuration: Span and dimensions as shown on the assembly drawings.

5.0 RESULTS

A full set of calculations and results is presented in RJC #VAN.117486.0001 engineering review package. These documents contain proprietary information and as such, have not been included in this report.



6.0 CONCLUSION

The Infinity Topless Railing Systems meets the requirements for 1 and 2 dwelling units within Part 9 of the Alberta Building Code 2014, British Columbia Building Code 2012, National Building Code of Canada 2015, and Ontario Building Code 2012.

Limitations of compliance are defined in the assembly drawings presented in Appendix A.

Yours truly,

READ JONES CHRISTOFFERSEN LTD.

A handwritten signature in blue ink, appearing to read 'L Hall', written over a horizontal line.

Liam Hall, B.Eng. (Hons), EIT
Design Engineer

Reviewed by:

A circular red professional engineer seal for the Province of British Columbia. The seal contains the name 'C. CHUN' and the number '4395'. A handwritten signature in blue ink is written over the seal, and the date 'MAY 30/17' is written in blue ink at the bottom of the seal.

Carmen Chun, M.Eng., P.Eng., LEED AP
Project Engineer

LJH/hj

Enc. Appendix A – Assembly Drawings

LIMITS OF COMMISSION

RJC prepared this report for the use of Innovative Aluminum Systems Inc. The material in it reflects RJC's judgement in light of information available to RJC at the time of preparation, including but not limited to material data sheets, independent testing, and physical mock-ups. Any use that a third party makes of this report, or any reliance or decisions to be based on it, is the responsibility of such third parties. RJC accepts no responsibility for damages, if any, suffered by any third party as a result of decisions made or actions based on this report.

This report was prepared for Innovative Aluminum Systems Inc. It is not for the use or benefit of, nor may it be relied upon, by any other person or entity, without written permission of Read Jones Christoffersen Ltd.

Appendix A Assembly Drawings

TOPLESS GLASS RAILING SYSTEM:

FINISHED RAIL HEIGHT: 42"

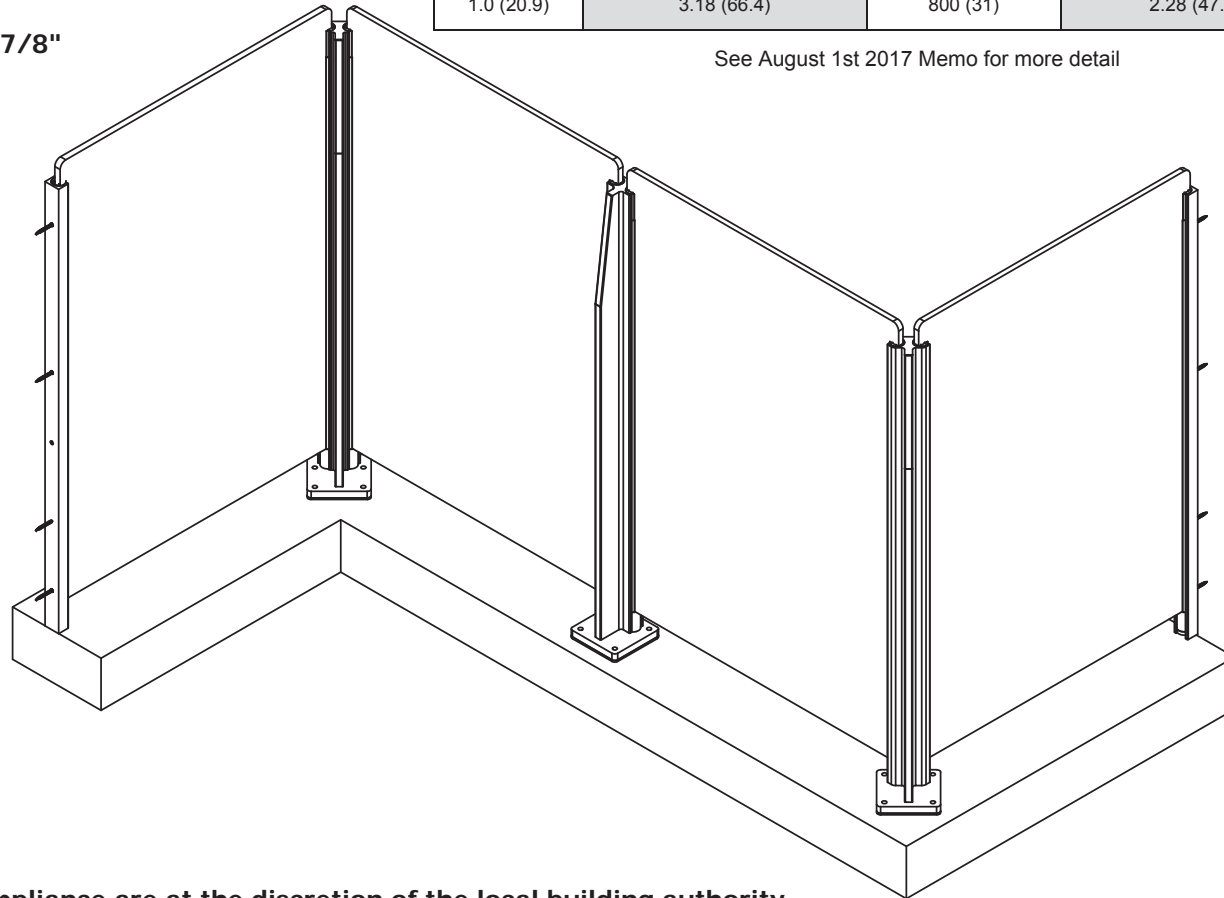
FINISHED POST HEIGHT: 34" TO 40"

FINISHED WALL TRACK HEIGHT: 34" TO 40"

MAXIMUM BOTTOM GAP: 3 7/8"

q ₅₀ values kPa, (psf)	p, design wind pressure kPa, (psf) Open Terrain, C _e = 0.98	Max. spacing between posts mm, (in)	p, design wind pressure kPa, (psf) Rough Terrain, C _e = 0.70	Max. spacing between posts mm, (in)
0.3 (6.3)	0.95 (19.8)	2200 (86)	0.68 (14.2)	2200 (86)
0.6 (12.5)	1.91 (39.9)	1325 (52)	1.37 (28.6)	1875 (73)
1.0 (20.9)	3.18 (66.4)	800 (31)	2.28 (47.6)	1125 (44)

See August 1st 2017 Memo for more detail



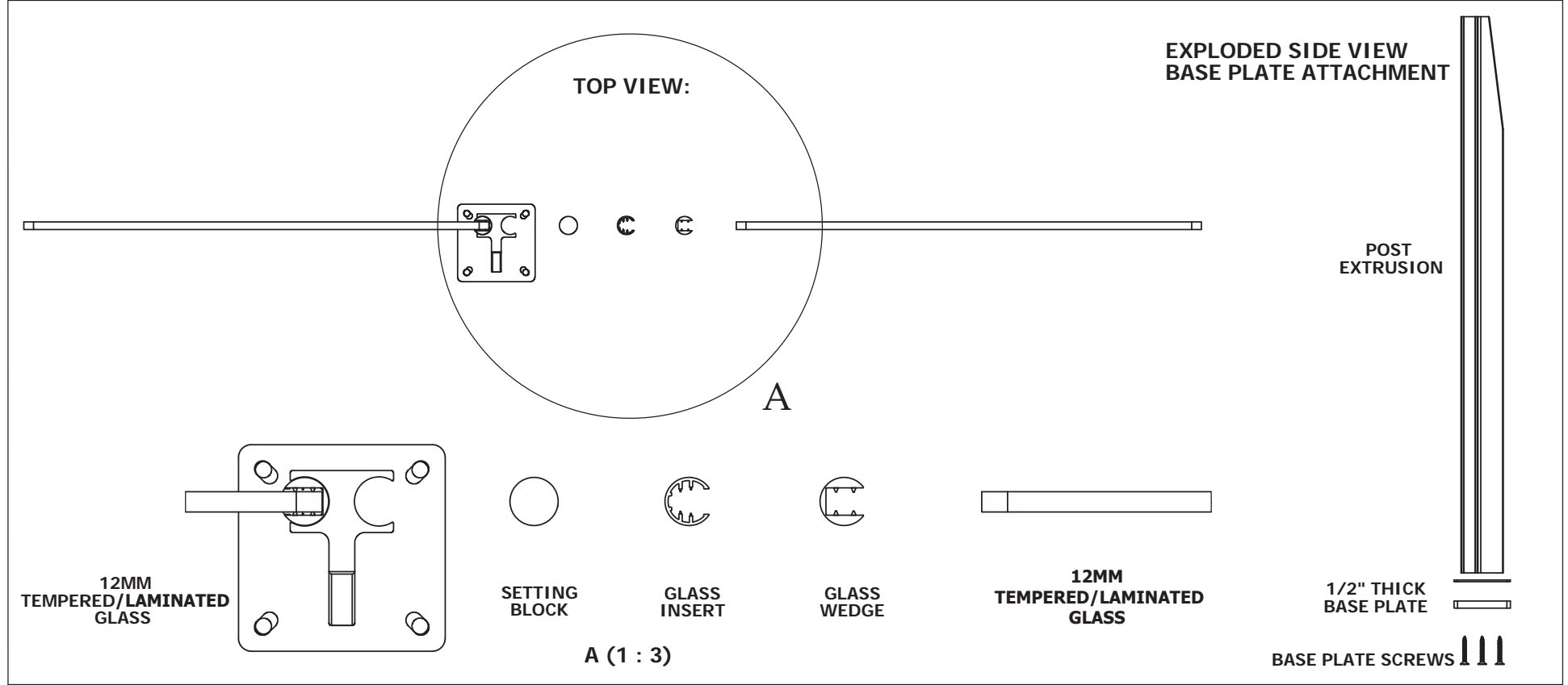
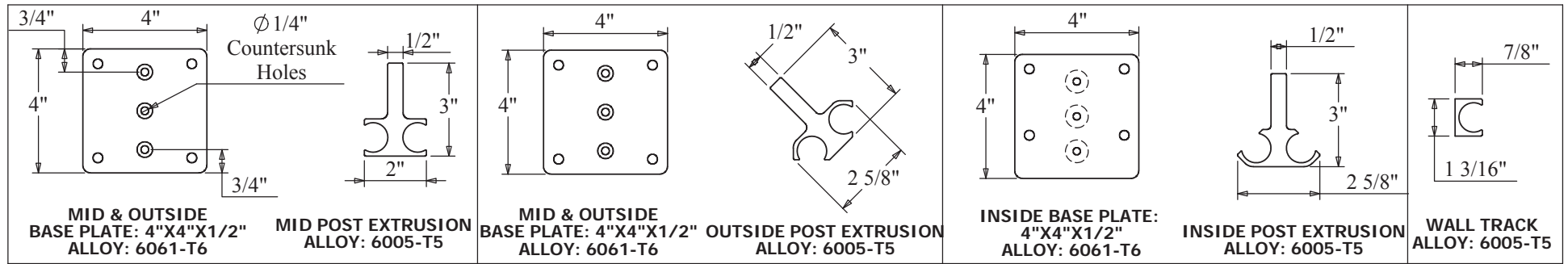
**All final decisions of code compliance are at the discretion of the local building authority.
 Always ensure approval by the local authority prior to installation.**



"Taking your railing concepts to completion"

Innovative Aluminum Systems Inc. Phone: 1-604-626-4373
 #306 - 26730 56th Ave Fax: 1-604-626-7343
 Aldergrove, BC V4W 3X5 Toll Free: 1-877-724-5427
 Phone: (604) 626 - 4373 Website: www.innovativealuminum.com
 Fax: (604) 626 - 4372 E-mail: info@innovativealuminum.com

THE MATERIAL CONTAINED HEREIN IS PROPRIETARY TO INNOVATIVE ALUMINUM SYSTEMS INC. AND SHALL NOT BE REPRODUCED, DISCLOSED, OR USED FOR ANY OTHER PURPOSE WITHOUT THE WRITTEN CONSENT OF INNOVATIVE ALUMINUM INC.





INNOVATIVE ALUMINUM SYSTEMS INC.

"Taking your railing concepts to completion"

Innovative Aluminum Systems Inc. Phone: 1-604-626-4373
 #306 - 26730 56th Ave Fax: 1-604-626-7343
 Aldergrove, BC V4W 3X5 Toll Free: 1-877-724-5427
 Phone: (604) 626 - 4373 Website: www.innovativealuminum.com
 Fax: (604) 626 - 4372 E-mail: info@innovativealuminum.com

THE MATERIAL CONTAINED HEREIN IS PROPRIETARY TO INNOVATIVE ALUMINUM SYSTEMS INC. AND SHALL NOT BE REPRODUCED, DISCLOSED, OR USED FOR ANY OTHER PURPOSE WITHOUT THE WRITTEN CONSENT OF INNOVATIVE ALUMINUM INC.

TOPLESS GLASS RAILING SYSTEM:

FINISHED RAIL HEIGHT: 42"

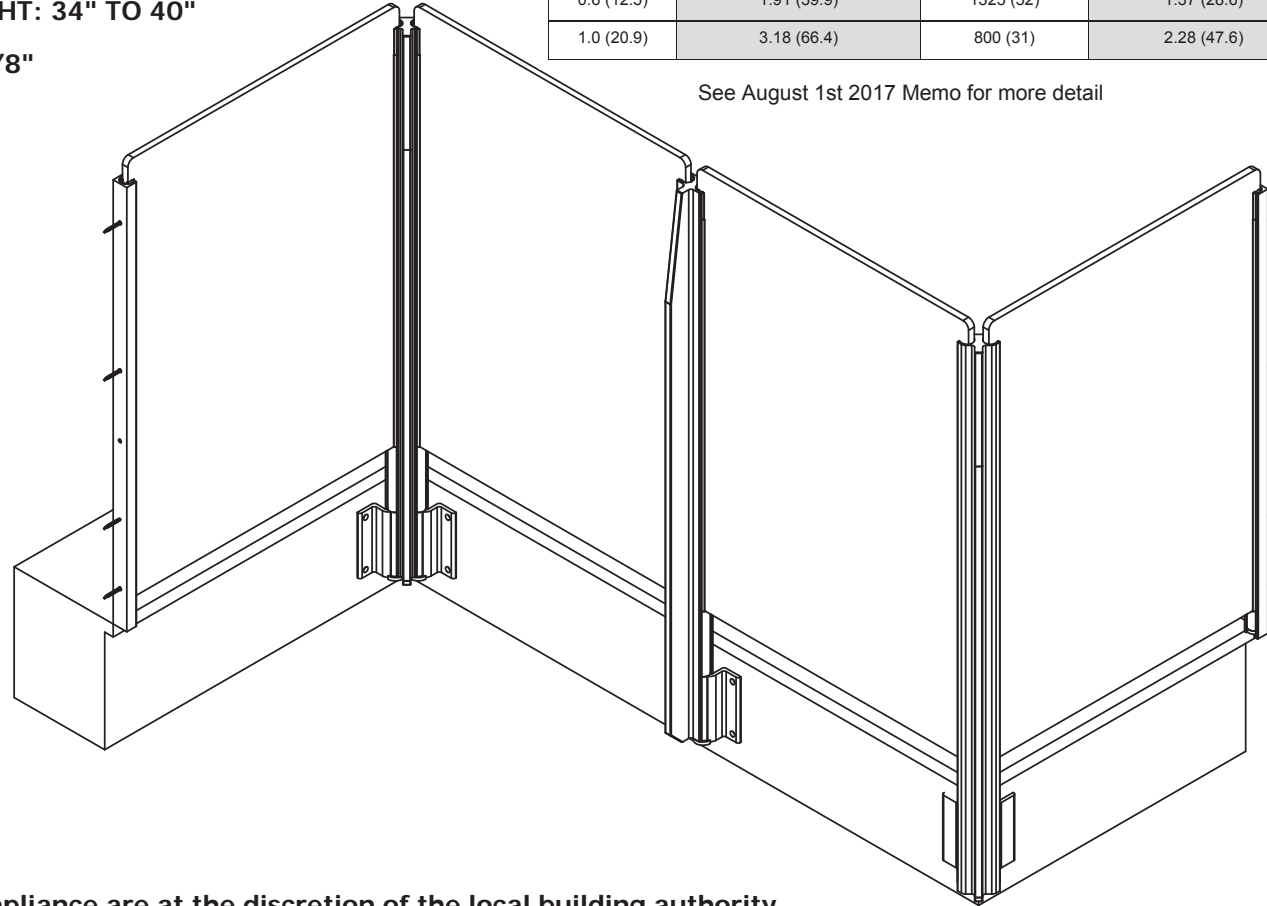
FINISHED POST HEIGHT: 42" TO 48"

FINISHED WALL TRACK HEIGHT: 34" TO 40"

MAXIMUM BOTTOM GAP: 3 7/8"

q ₅₀ values kPa, (psf)	p, design wind pressure kPa, (psf)		Max. spacing between posts mm, (in)	p, design wind pressure kPa, (psf)	
	Open Terrain, C _e = 0.98			Rough Terrain, C _e = 0.70	
0.3 (6.3)	0.95 (19.8)		2200 (86)	0.68 (14.2)	
0.6 (12.5)	1.91 (39.9)		1325 (52)	1.37 (28.6)	
1.0 (20.9)	3.18 (66.4)		800 (31)	2.28 (47.6)	

See August 1st 2017 Memo for more detail



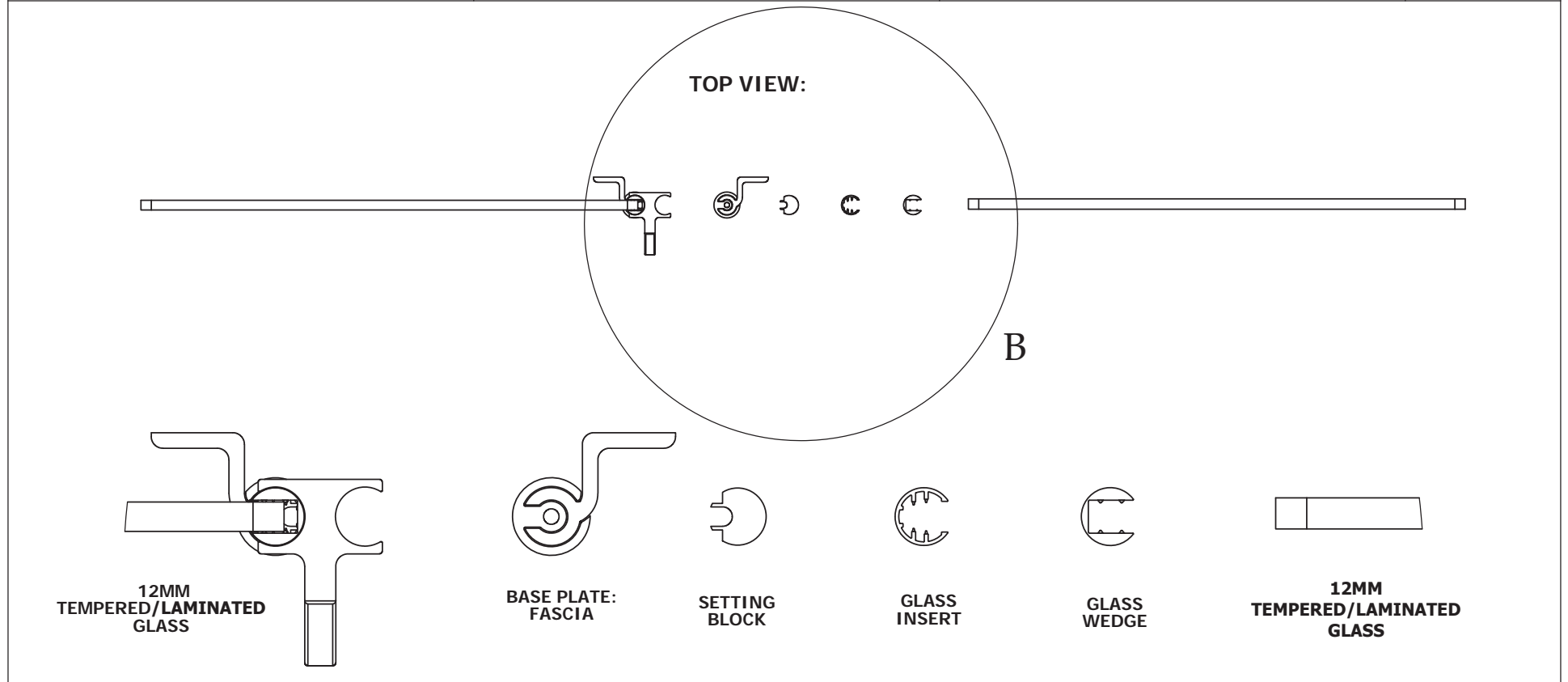
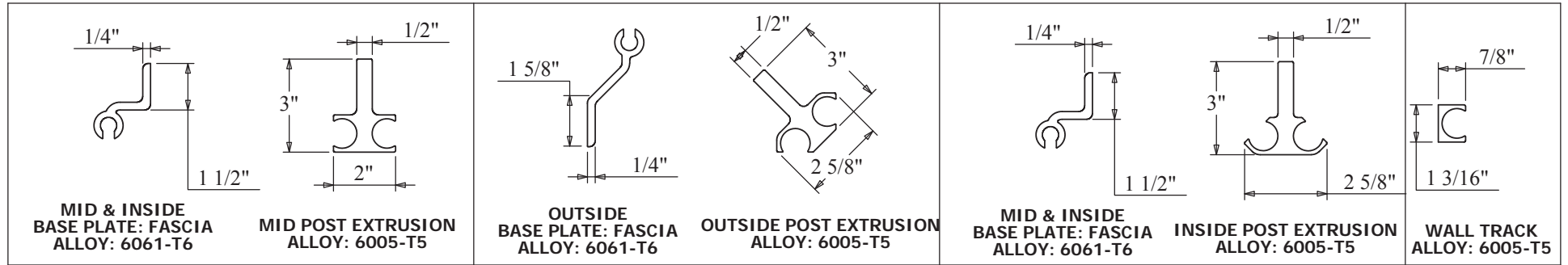
**All final decisions of code compliance are at the discretion of the local building authority.
 Always ensure approval by the local authority prior to installation.**



"Taking your railing concepts to completion"

Innovative Aluminum Systems Inc. Phone: 1-604-626-4373
 #306 - 26730 56th Ave Fax: 1-604-626-7343
 Aldergrove, BC V4W 3X5 Toll Free: 1-877-724-5427
 Phone: (604) 626 - 4373 Website: www.innovativealuminum.com
 Fax: (604) 626 - 4372 E-mail: info@innovativealuminum.com

THE MATERIAL CONTAINED HEREIN IS PROPRIETARY TO INNOVATIVE ALUMINUM SYSTEMS INC. AND SHALL NOT BE REPRODUCED, DISCLOSED, OR USED FOR ANY OTHER PURPOSE WITHOUT THE WRITTEN CONSENT OF INNOVATIVE ALUMINUM INC.



"Taking your railing concepts to completion"

Innovative Aluminum Systems Inc. Phone: 1-604-626-4373
 #306 - 26730 56th Ave Fax: 1-604-626-7343
 Aldergrove, BC V4W 3X5 Toll Free: 1-877-724-5427
 Phone: (604) 626 - 4373 Website: www.innovativealuminum.com
 Fax: (604) 626 - 4372 E-mail: info@innovativealuminum.com

THE MATERIAL CONTAINED HEREIN IS PROPRIETARY TO INNOVATIVE ALUMINUM SYSTEMS INC. AND SHALL NOT BE REPRODUCED, DISCLOSED, OR USED FOR ANY OTHER PURPOSE WITHOUT THE WRITTEN CONSENT OF INNOVATIVE ALUMINUM INC.

TOPLESS GLASS RAILING SYSTEM - SURFACE MOUNTED

FINISHED RAIL HEIGHT: 42"

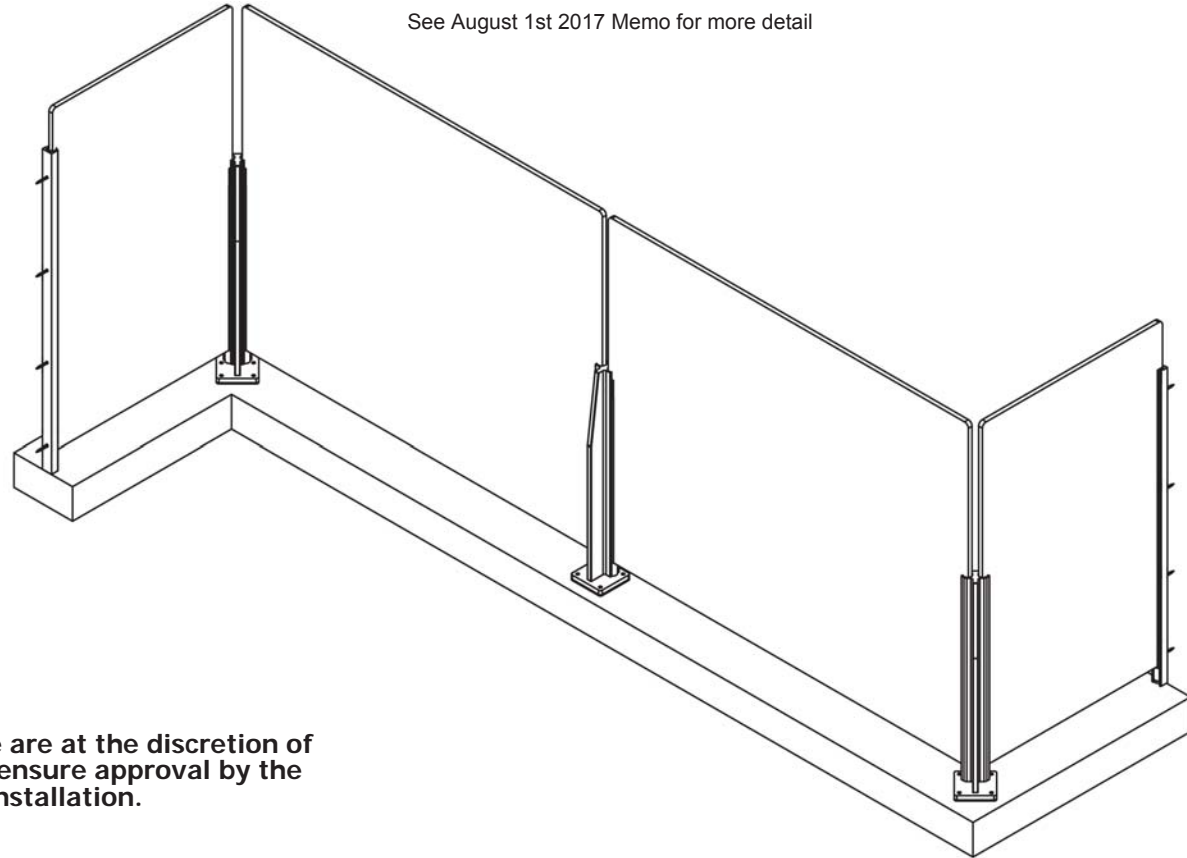
FINISHED POST HEIGHT: 24"

FINISHED WALL TRACK HEIGHT: 34"- 40"

MAXIMUM BOTTOM GAP: 3 7/8"

q ₅₀ values kPa, (psf)	p, design wind pressure kPa, (psf) Open Terrain, C _e = 0.98	Max. spacing between posts mm, (in)	p, design wind pressure kPa, (psf) Rough Terrain, C _e = 0.70	Max. spacing between posts mm, (in)
0.3 (6.3)	0.95 (19.8)	1650 (65)	0.68 (14.2)	1800 (71)
0.6 (12.5)	1.91 (39.9)	900 (35)	1.37 (28.6)	1500 (60)
1.0 (20.9)	3.18 (66.4)	Not Recommended	2.28 (47.6)	750 (30)

See August 1st 2017 Memo for more detail

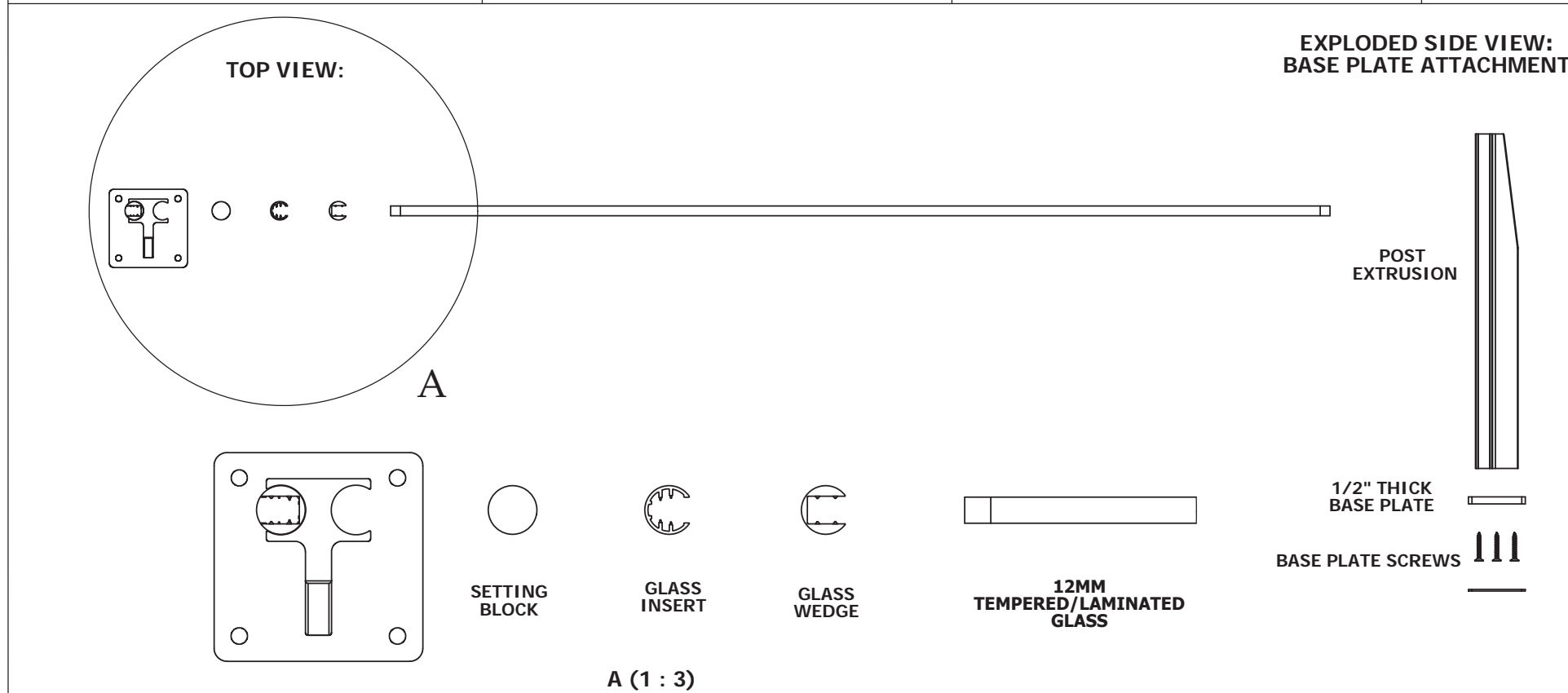
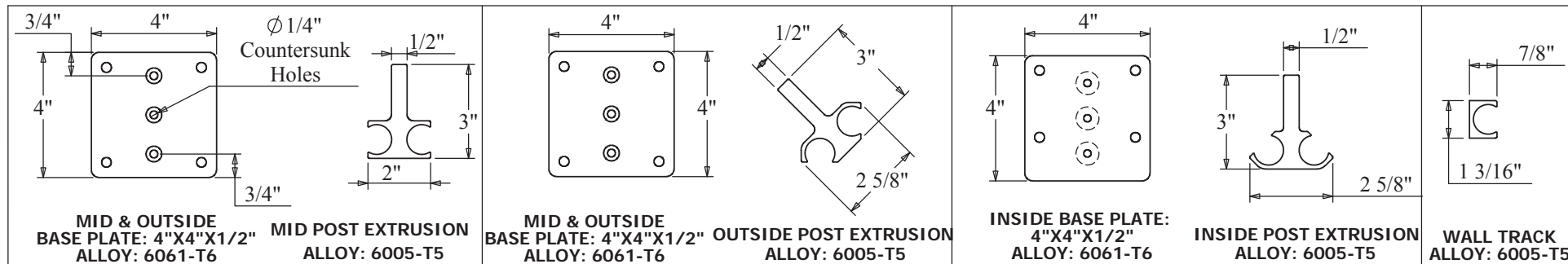


All final decisions of code compliance are at the discretion of the local building authority. Always ensure approval by the local authority prior to installation.



"Taking your railing concepts to completion"

Innovative Aluminum Systems Inc. Phone: 1-604-626-4373
 #306 - 26730 56th Ave Fax: 1-604-626-7343
 Aldergrove, BC V4W 3X5 Toll Free: 1-877-724-5427
 Phone: (604) 626 - 4373 Website: www.innovativealuminum.com
 Fax: (604) 626 - 4372 E-mail: info@innovativealuminum.com



"Taking your railing concepts to completion"

Innovative Aluminum Systems Inc. Phone: 1-604-626-4373
 #306 - 26730 56th Ave Fax: 1-604-626-7343
 Aldergrove, BC V4W 3X5 Toll Free: 1-877-724-5427
 Phone: (604) 626 - 4373 Website: www.innovativealuminum.com
 Fax: (604) 626 - 4372 E-mail: info@innovativealuminum.com

THE MATERIAL CONTAINED HEREIN IS PROPRIETARY TO INNOVATIVE ALUMINUM SYSTEMS INC. AND SHALL NOT BE REPRODUCED, DISCLOSED, OR USED FOR ANY OTHER PURPOSE WITHOUT THE WRITTEN CONSENT OF INNOVATIVE ALUMINUM INC.

TOPLESS GLASS RAILING SYSTEM - FASCIA MOUNTED

FINISHED RAIL HEIGHT: 42"

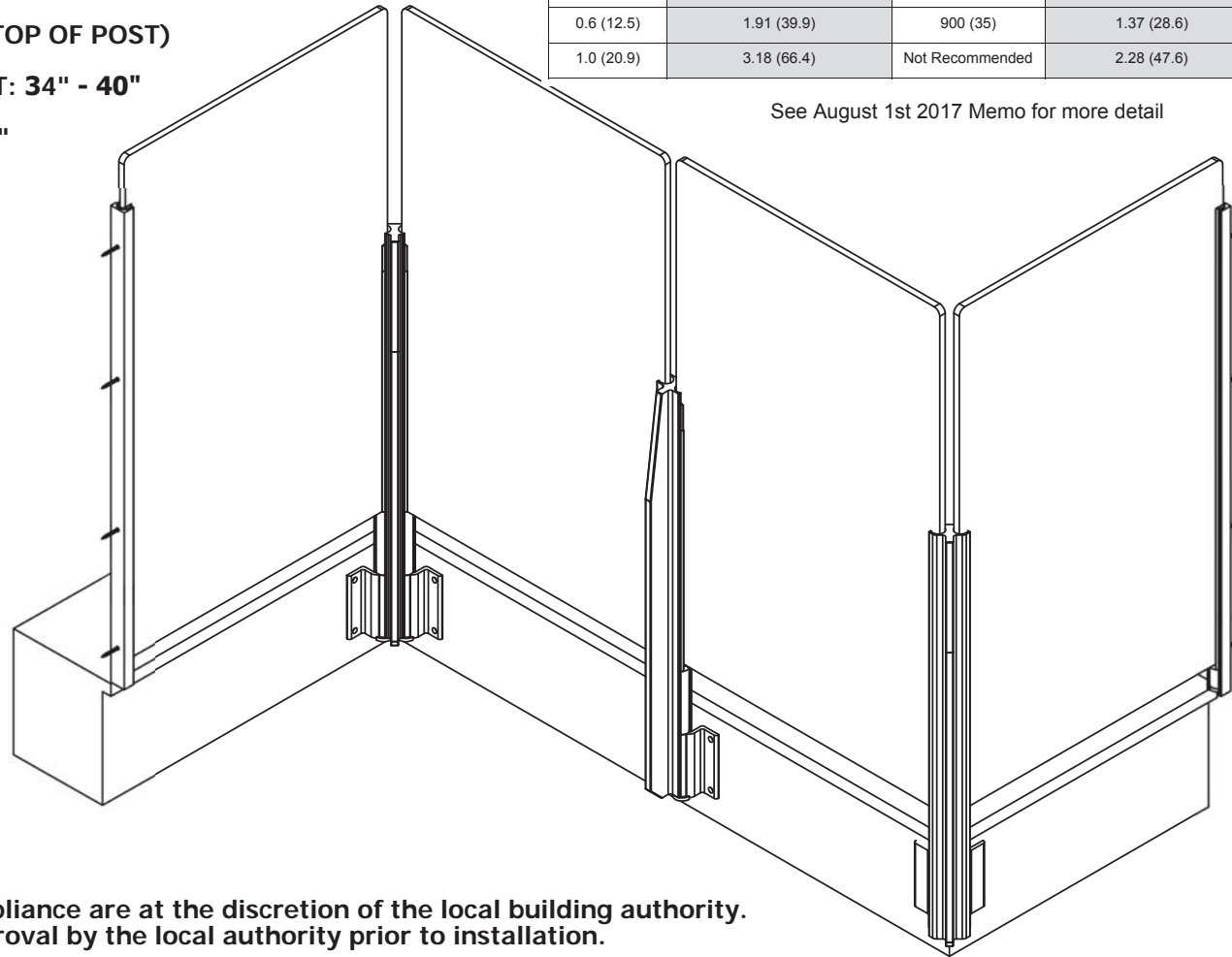
**FINISHED POST HEIGHT: 32"
 (24" FROM DECK SURFACE TO TOP OF POST)**

FINISHED WALL TRACK HEIGHT: 34" - 40"

MAXIMUM BOTTOM GAP: 3 7/8"

q ₅₀ values kPa, (psf)	p, design wind pressure kPa, (psf) Open Terrain, C _e = 0.98		Max. spacing between posts mm, (in)	p, design wind pressure kPa, (psf) Rough Terrain, C _e = 0.70	
0.3 (6.3)	0.95 (19.8)		1650 (65)	0.68 (14.2)	1800 (71)
0.6 (12.5)	1.91 (39.9)		900 (35)	1.37 (28.6)	1500 (60)
1.0 (20.9)	3.18 (66.4)		Not Recommended	2.28 (47.6)	750 (30)

See August 1st 2017 Memo for more detail



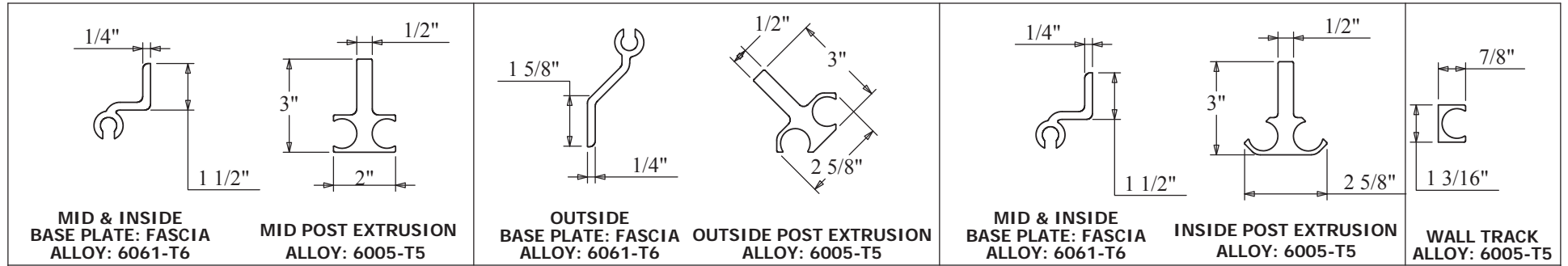
**All final decisions of code compliance are at the discretion of the local building authority.
 Always ensure approval by the local authority prior to installation.**



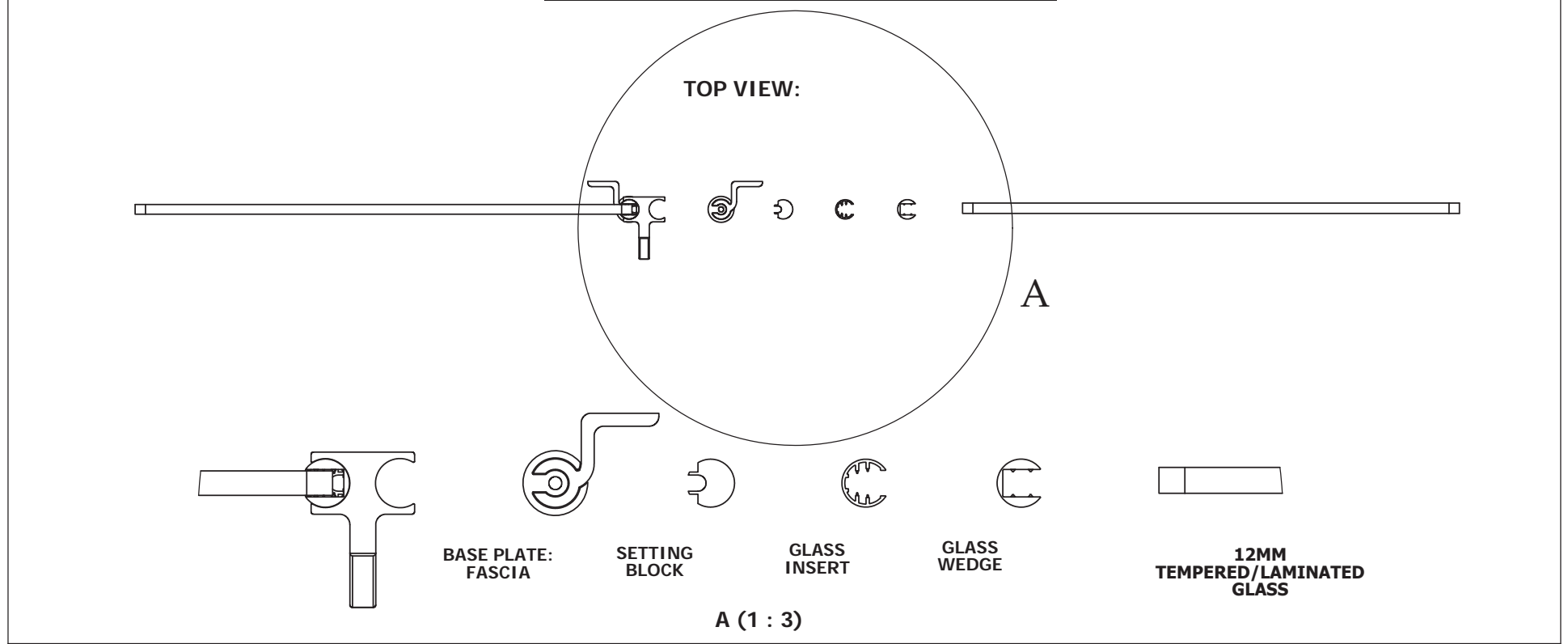
"Taking your railing concepts to completion"

Innovative Aluminum Systems Inc. Phone: 1-604-626-4373
 #306 - 26730 56th Ave Fax: 1-604-626-7343
 Aldergrove, BC V4W 3X5 Toll Free: 1-877-724-5427
 Phone: (604) 626 - 4373 Website: www.innovativealuminum.com
 Fax: (604) 626 - 4372 E-mail: info@innovativealuminum.com

THE MATERIAL CONTAINED HEREIN IS PROPRIETARY TO INNOVATIVE ALUMINUM SYSTEMS INC. AND SHALL NOT BE REPRODUCED, DISCLOSED, OR USED FOR ANY OTHER PURPOSE WITHOUT THE WRITTEN CONSENT OF INNOVATIVE ALUMINUM INC.



TYPICAL HEIGHT OF FASCIA PLATES IS 5" TALL

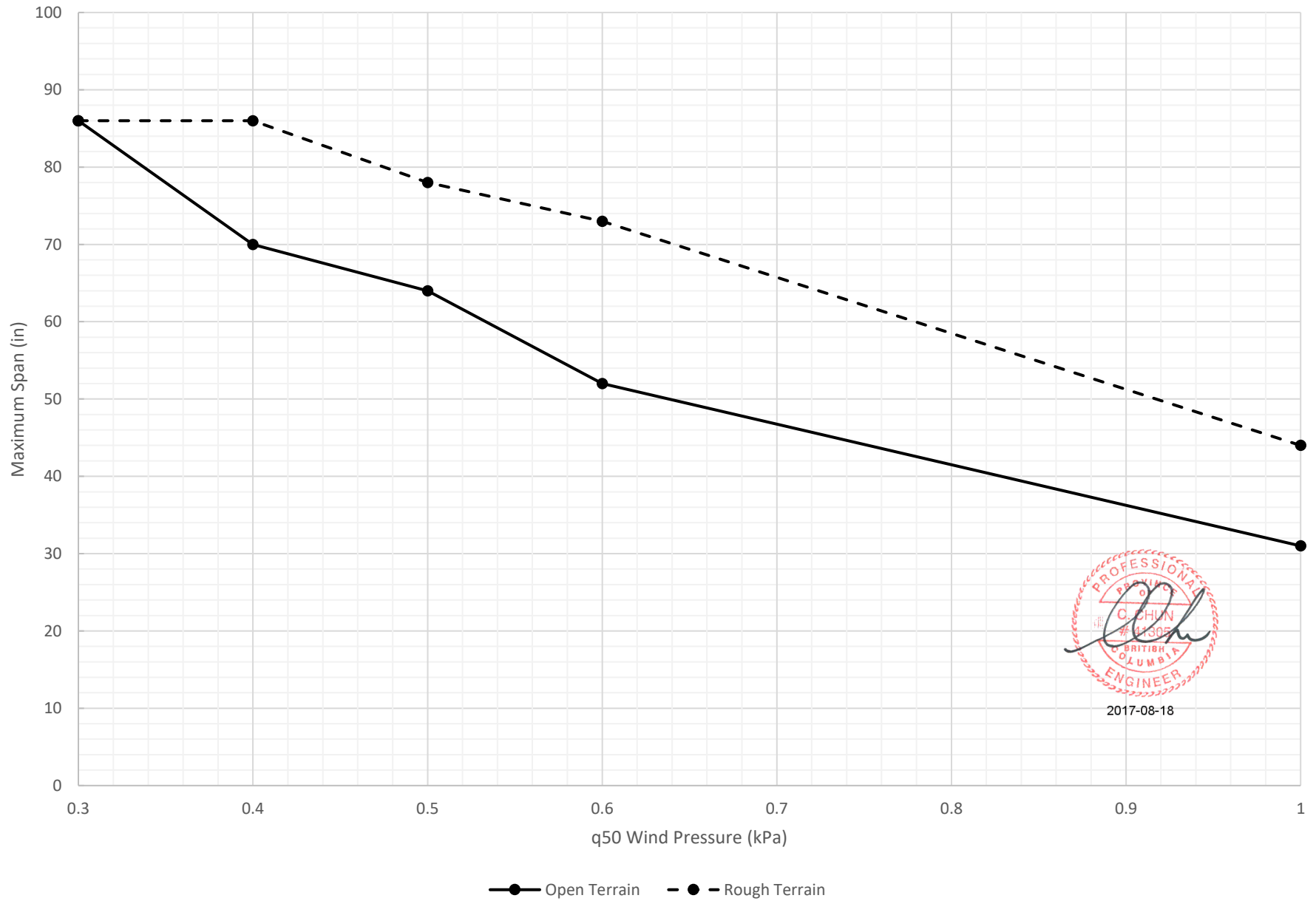


"Taking your railing concepts to completion"

Innovative Aluminum Systems Inc. Phone: 1-604-626-4373
 #306 - 26730 56th Ave Fax: 1-604-626-7343
 Aldergrove, BC V4W 3X5 Toll Free: 1-877-724-5427
 Phone: (604) 626 - 4373 Website: www.innovativealuminum.com
 Fax: (604) 626 - 4372 E-mail: info@innovativealuminum.com

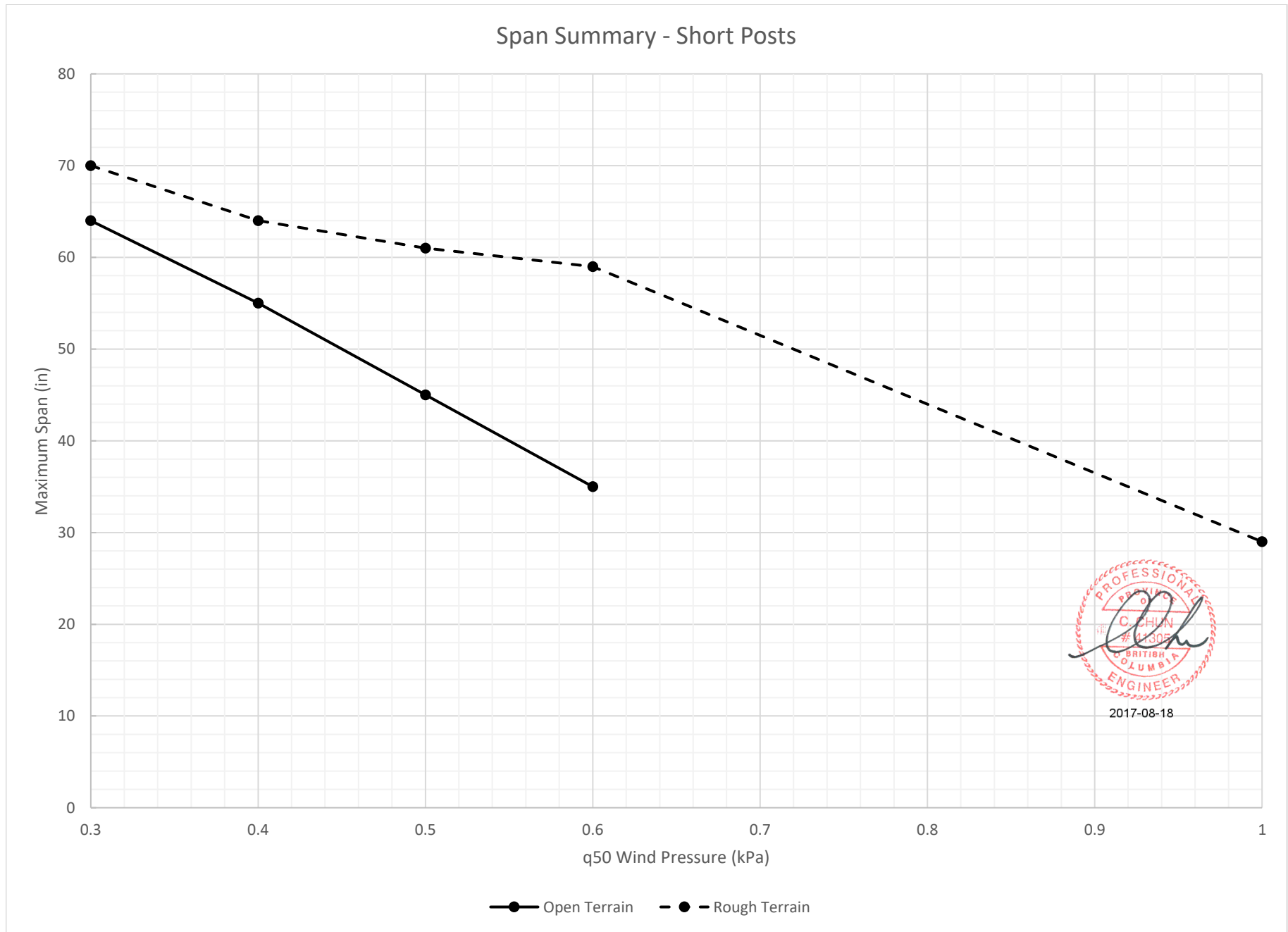
THE MATERIAL CONTAINED HEREIN IS PROPRIETARY TO INNOVATIVE ALUMINUM SYSTEMS INC. AND SHALL NOT BE REPRODUCED, DISCLOSED, OR USED FOR ANY OTHER PURPOSE WITHOUT THE WRITTEN CONSENT OF INNOVATIVE ALUMINUM INC.

Span Summary - Tall Posts



2017-08-18

This chart shows the maximum allowable spacing between posts (centreline to centreline) corresponding to the wind pressure. It is the installer's responsibility to verify the wind pressure values against the applicable local and regional building code requirements.



2017-08-18

This chart shows the maximum allowable spacing between posts (centreline to centreline) corresponding to the wind pressure. It is the installer's responsibility to verify the wind pressure values against the applicable local and regional building code requirements.

Commentary I

conversion of reference wind pressure, q , to reference wind speed, \bar{V} , needed in Equation (13) (see Paragraph 49).

Reference Height

7. To calculate external pressure using both the Static and Dynamic Procedures, the reference height, h , for calculating C_e is defined as follows:
 - (a) For low-rise buildings, as defined in Paragraph 26, h is the mean height of the roof or 6 m, whichever is greater. The height of the eaves may be substituted for the mean height if the slope of the roof is less than 7° .
 - (b) For taller buildings,
 - (i) h for the windward face is the actual height of that point above ground,
 - (ii) h for the leeward face is half the height of the building, and
 - (iii) h for the roof and side walls is the height of the building.
 - (c) For any structural element of the building, h is the height of the element above ground.
8. To calculate internal pressure, h for calculating C_e is defined as half the height of the building, except that when a large opening is present, h should be taken as the height of the opening from the ground.

Static Procedure

Application

9. The Static Procedure can be used to calculate the wind loads on all buildings except those with the criteria defined in NBC Sentence 4.1.7.2.(1) and Figure I-1.

Exposure Factor, C_e

10. The exposure factor, C_e , reflects changes in wind speed with height, as well as the effects of variations in the surrounding terrain and topography.
11. The value of C_e to be used for the Static Procedure is given in NBC Sentence 4.1.7.1.(5). It is based on the profile (variation with height) of wind-gust pressure on two types of surrounding terrain, open and rough, which are illustrated in Figures I-2 to I-5. For open terrain, the profile is assumed to obey the 0.2 power law, which is equivalent to the 0.1 power law for wind-gust speeds. For rough terrain, the 0.3 power law is assumed for the wind-gust pressure profile (equivalent to the 0.15 power law for wind-gust speed). The wind gust referred to lasts about 3 to 5 s and represents a parcel of wind, which is assumed to have an effect over the whole structure of most ordinary buildings.

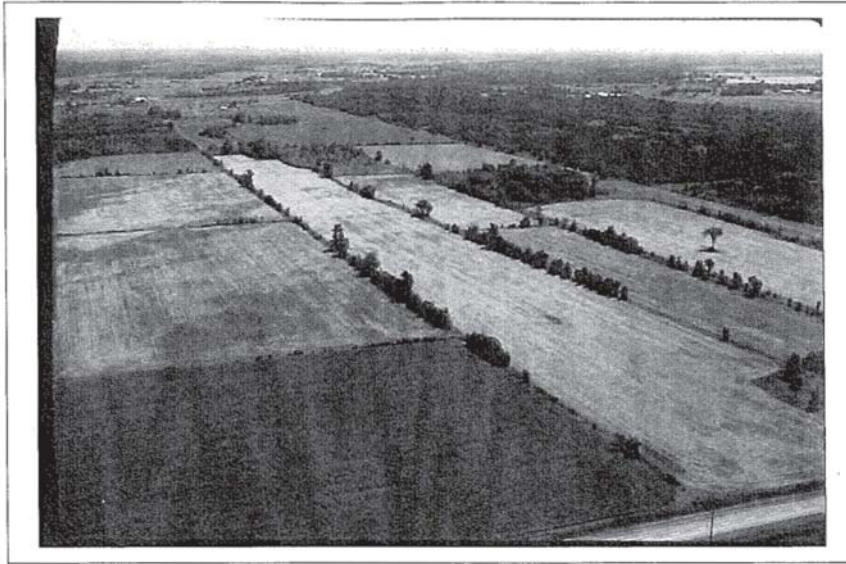


Figure I-2
Example of open terrain under the Static Procedure and of Exposure A under the Dynamic Procedure for determining the exposure factor, C_e . (See also Figure I-3.) (Reproduced with the permission of the National Capital Commission ©NCC/CCN)

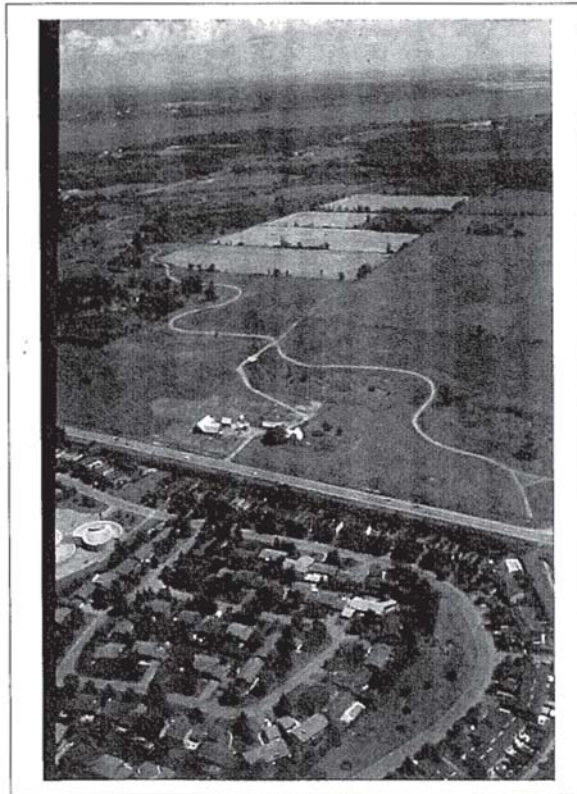


Figure I-3
Example of open and rough terrains under the Static Procedure. Buildings located in the foreground near the road should be designed for open-terrain exposure. Buildings that are located away from the road and deeper into the built-up area should be designed for either an intermediate exposure as given in Paragraph 12, or a rough-terrain exposure as given in Paragraph 11, depending on the distance from the road. (See also Figure I-4.) (Reproduced with the permission of the National Capital Commission ©NCC/CCN)

Commentary I

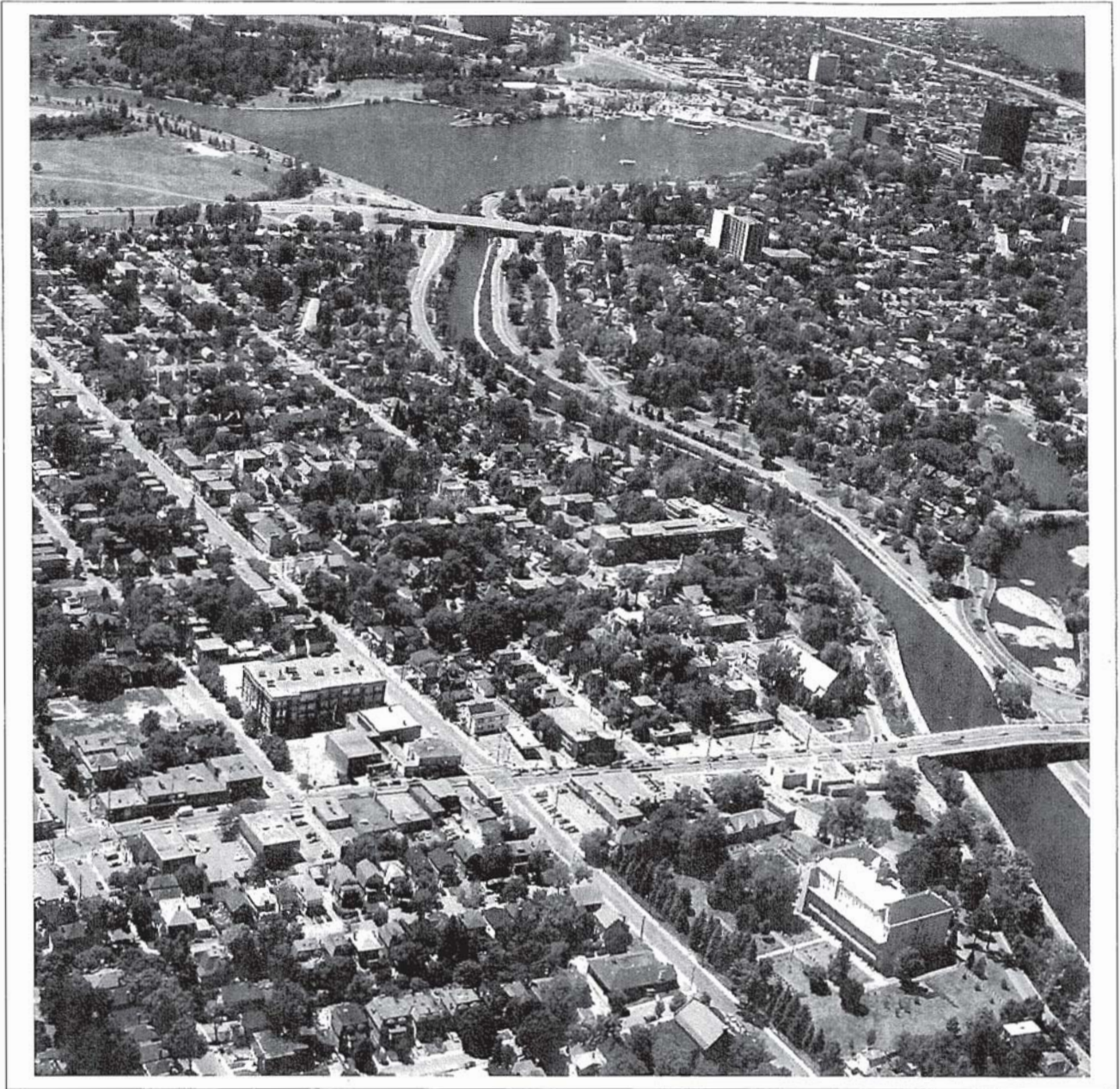


Figure I-4

Example of rough terrain under the Static Procedure and of Exposure B under the Dynamic Procedure. Buildings located on the periphery of the lake and open area in the background may be required to be designed for an open-terrain exposure. (Reproduced with the permission of the National Capital Commission ©NCC/CCN)



Figure I-5

Example of Exposure B under the Dynamic Procedure. Buildings located on the periphery of the lake in the right background may be required to be designed for Exposure A. In addition, tall buildings in the foreground may be required to be designed by experimental methods to account for channeling, buffeting and vortex-shedding effects. (Reproduced with the permission of The Helicopter Company Inc., Toronto, Canada, 2003)

Changes in Terrain

12. The value of C_e given in Paragraph 11 for rough terrain can be used when the rough terrain extends in the upwind direction for at least 1 km or 20 times the building height, H , whichever is greater. When the rough terrain extends for less than 1 km (i.e. $x < 1$ km) and the building is less than 50 m tall, the value of C_e may be interpolated between those for the open and the rough terrain using the following formulae:

for x_r greater than 0.05 km and less than 1 km,

$$C_e = C_{er} \left(0.816 + 0.184 \log_{10} \left(\frac{10}{x_r - 0.05} \right) \right) \leq C_{eo} \quad (1)$$

and for x_r less than or equal to 0.05 km,

$$C_e = C_{eo} \quad (2)$$

where x_r is the upwind extent of rough terrain, C_{er} is the C_e for rough terrain, and C_{eo} is the C_e for open terrain. Equations (1) and (2) are based on the studies described in Irwin.^[7]

Appendix C

Climatic and Seismic Information for Building Design in Canada

Introduction

The great diversity of climate in Canada has a considerable effect on the performance of buildings; consequently, building design must reflect this diversity. This Appendix briefly describes how climatic design values are computed and provides recommended design data for a number of cities, towns, and lesser populated locations. Through the use of such data, appropriate allowances can be made for climate variations in different localities of Canada and the National Building Code can be applied nationally.

The climatic design data provided in this Appendix are based on weather observations collected by the Atmospheric Environment Service, Environment Canada. The climatic design data have been researched and analyzed for the Canadian Commission on Building and Fire Codes by Environment Canada, and appear at the end of this Appendix in Table C-2, Design Data for Selected Locations in Canada.

As it is not practical to list values for all municipalities in Canada, recommended climatic design values for locations not listed can be obtained by contacting the Atmospheric Environment Service, Environment Canada, 4905 Dufferin Street, Downsview, Ontario M3H 5T4, (416) 739-4365. It should be noted, however, that these recommended values may differ from the legal requirements set by provincial, territorial or municipal building authorities.

The information on seismic hazard in spectral format has been provided by the Geological Survey of Canada of Natural Resources Canada. Information for municipalities not listed may be obtained through the Natural Resources Canada Web site at www.EarthquakesCanada.ca, or by writing to the Geological Survey of Canada at 7 Observatory Crescent, Ottawa, Ontario K1A 0Y3, or at P.O. Box 6000, Sidney, B.C. V8L 4B2.

General

The choice of climatic elements tabulated in this Appendix and the form in which they are expressed have been dictated largely by the requirements for specific values in several sections of the National Building Code of Canada 2010. These elements include the Ground Snow Loads, Wind Pressures, Design Temperatures, Heating Degree-Days, One-Day and 15-Minute Rainfalls, the Annual Total Precipitation values and Seismic Data. The following notes briefly explain the significance of these particular elements in building design, and indicate which weather observations were used and how they were analyzed to yield the required design values.

In Table C-2, Design Data for Selected Locations in Canada (referred to in this Appendix as the Table), design weather recommendations and elevations are listed for over 600 locations, which have been chosen based on a variety of reasons. Many incorporated cities and towns with significant populations are included unless located close to larger cities. For sparsely populated areas, many smaller towns and villages are listed. Other locations have been added to the list when the demand for climatic design recommendations at these sites has been significant. The named locations refer to the specific latitude and longitude defined by the Gazetteer of Canada (Natural Resources Canada), available from Publishing and Depository Services Canada, Public Works and Government Services Canada, Ottawa, Ontario K1A 0S5. The elevations are given in metres and refer to heights above sea level.

Almost all of the weather observations used in preparing the Table were, of necessity, observed at inhabited locations. To estimate design values for arbitrary locations, the observed or computed values for the weather stations were mapped and interpolated appropriately. Where possible, adjustments have been applied for the influence of elevation and known topographical effects. Such influences include the tendency of cold air to collect in depressions, for precipitation to increase with elevation, and for generally stronger winds near large bodies of water. Elevations have been added to the Table because of their potential to significantly influence climatic design values.

This Appendix is included for explanatory purposes only and does not form part of the requirements.

Table C-2
Design Data for Selected Locations in Canada

Province and Location	Elev., m	Design Temperature				Degree- Days Below 18°C	15 Min. Rain, mm	One Day Rain, 1/50, mm	Ann. Rain, mm	Moist. Index	Ann. Tot. Ppn., mm	Driving Rain Wind Pres- sures, Pa, 1/5	Snow Load, kPa, 1/50		Hourly Wind Pressures, kPa		Seismic Data ⁽¹⁾				
		January		July 2.5%									S _s	S _t	1/10	1/50	S _a (0.2)	S _a (0.5)	S _a (1.0)	S _a (2.0)	PGA
		2.5% °C	1% °C	Dry °C	Wet °C																
British Columbia																					
100 Mile House	1040	-30	-32	29	17	5030	10	48	300	0.44	425	60	2.6	0.3	0.27	0.35	0.28	0.17	0.099	0.058	0.14
Abbotsford	70	-8	-10	29	20	2860	12	112	1525	1.59	1600	160	2.0	0.3	0.34	0.44	0.99	0.66	0.32	0.17	0.49
Agassiz	15	-9	-11	31	21	2750	8	128	1650	1.71	1700	160	2.4	0.7	0.36	0.47	0.67	0.50	0.29	0.16	0.32
Alberni	12	-5	-8	31	19	3100	10	144	1900	2.00	2000	220	3.0	0.4	0.25	0.32	0.75	0.55	0.30	0.16	0.35
Ashcroft	305	-24	-27	34	20	3700	10	37	250	0.25	300	80	1.7	0.1	0.29	0.38	0.33	0.26	0.16	0.093	0.16
Barnfield	20	-2	-4	23	17	3080	13	170	2870	2.96	2890	280	1.0	0.4	0.39	0.50	1.1	0.89	0.45	0.20	0.49
Beatton River	840	-37	-39	26	18	6300	15	64	330	0.53	450	80	3.3	0.1	0.23	0.30	0.095	0.057	0.026	0.014	0.036
Bella Bella	25	-5	-7	23	18	3180	13	145	2715	2.82	2800	350	2.6	0.8	0.39	0.50	0.38	0.25	0.14	0.081	0.18
Bella Coola	40	-14	-18	27	19	3560	10	140	1500	1.85	1700	350	5.5	0.8	0.30	0.39	0.38	0.24	0.13	0.075	0.18
Bums Lake	755	-31	-34	26	17	5450	12	54	300	0.56	450	100	3.4	0.2	0.30	0.39	0.095	0.062	0.043	0.028	0.046
Cache Creek	455	-24	-27	34	20	3700	10	37	250	0.25	300	80	1.7	0.2	0.30	0.39	0.33	0.25	0.16	0.091	0.16
Campbell River	20	-5	-7	26	18	3000	10	116	1500	1.59	1600	260	3.3	0.4	0.40	0.52	0.63	0.46	0.28	0.15	0.28
Carmi	845	-24	-26	31	19	4750	10	64	325	0.38	550	60	3.9	0.2	0.29	0.38	0.28	0.17	0.090	0.053	0.14
Castlegar	430	-18	-20	32	20	3580	10	54	560	0.64	700	60	4.2	0.1	0.27	0.34	0.27	0.16	0.081	0.045	0.14
Chetwynd	605	-35	-38	27	18	5500	15	70	400	0.58	625	60	2.4	0.2	0.31	0.40	0.24	0.14	0.064	0.035	0.12
Chilliwack	10	-9	-11	30	20	2780	8	139	1625	1.68	1700	160	2.2	0.3	0.36	0.47	0.76	0.52	0.30	0.16	0.36
Comox	15	-7	-9	27	18	3100	10	106	1175	1.28	1200	260	2.6	0.4	0.40	0.52	0.66	0.49	0.29	0.16	0.30
Courtenay	10	-7	-9	28	18	3100	10	106	1400	1.49	1450	260	2.6	0.4	0.40	0.52	0.65	0.48	0.28	0.16	0.30
Cranbrook	910	-26	-28	32	18	4400	12	59	275	0.30	400	100	3.0	0.2	0.25	0.33	0.27	0.16	0.080	0.045	0.14
Crescent Valley	585	-18	-20	31	20	3650	10	54	675	0.75	850	80	4.2	0.1	0.25	0.33	0.27	0.16	0.081	0.045	0.14
Crofton	5	-4	-6	28	19	2880	8	86	925	1.06	950	160	1.8	0.2	0.31	0.40	1.1	0.74	0.37	0.18	0.54
Dawson Creek	665	-38	-40	27	18	5900	18	75	325	0.49	475	100	2.5	0.2	0.31	0.40	0.11	0.070	0.035	0.021	0.063
Dease Lake	800	-37	-40	24	15	6730	10	45	265	0.55	425	380	2.6	0.1	0.23	0.30	0.095	0.063	0.048	0.032	0.046
Dog Creek	450	-28	-30	29	17	4800	10	48	275	0.41	375	100	1.8	0.2	0.27	0.35	0.32	0.25	0.15	0.088	0.16
Duncan	10	-6	-8	28	19	2980	8	103	1000	1.13	1050	180	1.8	0.4	0.30	0.39	1.1	0.74	0.37	0.18	0.54
Elko	1065	-28	-31	30	19	4600	13	64	440	0.48	650	100	3.6	0.2	0.31	0.40	0.27	0.16	0.080	0.045	0.14

Table C-2 (Continued)

Province and Location	Elev., m	Design Temperature				Degree-Days Below 18°C	15 Min. Rain, mm	One Day Rain, 1/50, mm	Ann. Rain, mm	Moist. Index	Ann. Tot. Ppn., mm	Driving Rain Wind Pres- sures, Pa, 1/5	Snow Load, kPa, 1/50		Hourly Wind Pressures, kPa		Seismic Data ⁽¹⁾				
		January		July 2.5%									S _s	S _t	1/10	1/50	S _a (0.2)	S _a (0.5)	S _a (1.0)	S _a (2.0)	PGA
		2.5% °C	1% °C	Dry °C	Wet °C																
Fernie	1010	-27	-30	30	19	4750	13	118	860	0.88	1175	100	4.5	0.2	0.31	0.40	0.27	0.16	0.078	0.044	0.14
Fort Nelson	465	-39	-42	28	18	6710	15	70	325	0.56	450	80	2.4	0.1	0.23	0.30	0.095	0.057	0.034	0.022	0.040
Fort St. John	685	-35	-37	26	18	5750	15	72	320	0.50	475	100	2.8	0.1	0.30	0.39	0.096	0.061	0.032	0.019	0.054
Glacier	1145	-27	-30	27	17	5800	10	70	625	0.83	1500	80	9.4	0.2	0.25	0.32	0.27	0.16	0.078	0.044	0.13
Gold River	120	-8	-11	31	18	3230	13	200	2730	2.80	2850	250	2.6	0.6	0.25	0.32	0.80	0.64	0.33	0.15	0.35
Golden	790	-27	-30	30	17	4750	10	55	325	0.57	500	100	3.7	0.2	0.27	0.35	0.26	0.15	0.075	0.041	0.13
Grand Forks	565	-19	-22	34	20	3820	10	48	390	0.47	475	80	2.8	0.1	0.31	0.40	0.27	0.17	0.083	0.047	0.14
Greenwood	745	-20	-23	34	20	4100	10	64	430	0.51	550	80	4.0	0.1	0.31	0.40	0.27	0.17	0.085	0.049	0.14
Hope	40	-13	-15	31	20	3000	8	139	1825	1.88	1900	140	2.8	0.7	0.48	0.63	0.63	0.47	0.28	0.15	0.29
Jordan River	20	-1	-3	22	17	2900	12	170	2300	2.37	2370	250	1.2	0.4	0.43	0.55	0.99	0.78	0.40	0.17	0.47
Kamloops	355	-23	-25	34	20	3450	13	42	225	0.23	275	80	1.8	0.2	0.31	0.40	0.28	0.17	0.10	0.061	0.14
Kaslo	545	-17	-20	30	19	3830	10	55	660	0.82	850	80	2.8	0.1	0.24	0.31	0.27	0.16	0.080	0.045	0.14
Kelowna	350	-17	-20	33	20	3400	12	43	260	0.29	325	80	1.7	0.1	0.31	0.40	0.28	0.17	0.094	0.056	0.14
Kimberley	1090	-25	-27	31	18	4650	12	59	350	0.38	500	100	3.0	0.2	0.25	0.33	0.27	0.16	0.079	0.044	0.14
Kitimat Plant	15	-16	-18	25	16	3750	13	193	2100	2.19	2500	220	5.5	0.8	0.37	0.48	0.37	0.24	0.13	0.073	0.18
Kitimat Townsite	130	-16	-18	24	16	3900	13	171	1900	2.00	2300	220	6.5	0.8	0.37	0.48	0.37	0.24	0.13	0.073	0.18
Ladysmith	80	-7	-9	27	19	3000	8	97	1075	1.20	1160	180	2.4	0.4	0.31	0.40	1.1	0.72	0.36	0.18	0.53
Langford	80	-4	-6	27	19	2750	9	135	1095	1.22	1125	220	1.8	0.3	0.31	0.40	1.2	0.79	0.37	0.18	0.58
Lillooet	245	-21	-23	34	20	3400	10	70	300	0.31	350	100	2.1	0.1	0.34	0.44	0.60	0.44	0.26	0.14	0.27
Lytton	325	-17	-20	35	20	3300	10	70	330	0.33	425	80	2.8	0.3	0.33	0.43	0.60	0.44	0.26	0.14	0.27
Mackenzie	765	-34	-38	27	17	5550	10	50	350	0.54	650	60	5.1	0.2	0.25	0.32	0.23	0.13	0.061	0.034	0.12
Masset	10	-5	-7	17	15	3700	13	80	1350	1.54	1400	400	1.8	0.4	0.48	0.61	0.53	0.39	0.30	0.16	0.26
McBride	730	-29	-32	29	18	4980	13	54	475	0.64	650	60	4.3	0.2	0.27	0.35	0.27	0.16	0.076	0.042	0.14
McLeod Lake	695	-35	-37	27	17	5450	10	50	350	0.54	650	60	4.1	0.2	0.25	0.32	0.18	0.10	0.051	0.029	0.095
Merritt	570	-24	-27	34	20	3900	8	54	240	0.24	310	80	1.8	0.3	0.34	0.44	0.34	0.26	0.16	0.094	0.17
Mission City	45	-9	-11	30	20	2850	13	123	1650	1.71	1700	160	2.4	0.3	0.33	0.43	0.93	0.63	0.31	0.17	0.46
Montrose	615	-16	-18	32	20	3600	10	54	480	0.56	700	60	4.1	0.1	0.27	0.35	0.27	0.16	0.081	0.045	0.14
Nakusp	445	-20	-22	31	20	3560	10	60	650	0.78	850	60	4.4	0.1	0.25	0.33	0.27	0.16	0.080	0.045	0.14

Table C-2 (Continued)

Province and Location	Elev., m	Design Temperature				Degree- Days Below 18°C	15 Min. Rain, mm	One Day Rain, 1/50, mm	Ann. Rain, mm	Moist. Index	Ann. Tot. Ppn., mm	Driving Rain Wind Pres- sures, Pa, 1/5	Snow Load, kPa, 1/50		Hourly Wind Pressures, kPa		Seismic Data ⁽¹⁾				
		January		July 2.5%									S _s	S _t	1/10	1/50	S _a (0.2)	S _a (0.5)	S _a (1.0)	S _a (2.0)	PGA
		2.5% °C	1% °C	Dry °C	Wet °C																
Nanaimo	15	-6	-8	27	19	3000	10	91	1000	1.13	1050	200	2.3	0.4	0.39	0.50	1.0	0.69	0.35	0.18	0.50
Nelson	600	-18	-20	31	20	3500	10	59	460	0.57	700	60	4.2	0.1	0.25	0.33	0.27	0.16	0.080	0.045	0.14
Ocean Falls	10	-10	-12	23	17	3400	13	260	4150	4.21	4300	350	3.9	0.8	0.46	0.59	0.38	0.25	0.14	0.078	0.18
Osoyoos	285	-14	-17	35	21	3100	10	48	275	0.28	310	60	1.1	0.1	0.31	0.40	0.29	0.19	0.12	0.071	0.14
Parksville	40	-6	-8	26	19	3200	10	91	1200	1.31	1250	200	2.4	0.4	0.39	0.50	0.86	0.61	0.32	0.17	0.42
Penticton	350	-15	-17	33	20	3350	10	48	275	0.28	300	60	1.3	0.1	0.35	0.45	0.28	0.18	0.11	0.065	0.14
Port Alberni	15	-5	-8	31	19	3100	10	161	1900	2.00	2000	240	3.0	0.4	0.25	0.32	0.76	0.57	0.30	0.16	0.36
Port Alice	25	-3	-6	26	17	3010	13	200	3300	3.38	3340	220	1.1	0.4	0.25	0.32	0.65	0.43	0.24	0.14	0.28
Port Hardy	5	-5	-7	20	16	3440	13	150	1775	1.92	1850	220	0.9	0.4	0.40	0.52	0.43	0.31	0.17	0.10	0.20
Port McNeill	5	-5	-7	22	17	3410	13	128	1750	1.89	1850	260	1.1	0.4	0.40	0.52	0.43	0.36	0.19	0.10	0.20
Port Renfrew	20	-3	-5	24	17	2900	13	200	3600	3.64	3675	270	1.1	0.4	0.40	0.52	1.0	0.81	0.41	0.18	0.45
Powell River	10	-7	-9	26	18	3100	10	80	1150	1.27	1200	220	1.9	0.4	0.39	0.51	0.67	0.49	0.29	0.16	0.31
Prince George	580	-32	-36	28	18	4720	15	54	425	0.58	600	80	3.4	0.2	0.29	0.37	0.13	0.079	0.040	0.026	0.070
Prince Rupert	20	-13	-15	19	15	3900	13	160	2750	2.84	2900	240	1.9	0.4	0.42	0.54	0.38	0.25	0.15	0.086	0.18
Princeton	655	-24	-29	33	19	4250	10	43	235	0.35	350	80	2.9	0.6	0.28	0.36	0.42	0.31	0.19	0.11	0.20
Qualicum Beach	10	-7	-9	27	19	3200	10	96	1200	1.31	1250	200	2.2	0.4	0.41	0.53	0.82	0.58	0.31	0.17	0.39
Queen Charlotte City	35	-6	-8	21	16	3520	13	110	1300	1.47	1350	360	1.8	0.4	0.48	0.61	0.62	0.57	0.46	0.24	0.33
Quesnel	475	-31	-33	30	17	4650	10	50	380	0.51	525	80	3.0	0.1	0.24	0.31	0.27	0.16	0.075	0.041	0.13
Revelstoke	440	-20	-23	31	19	4000	13	55	625	0.80	950	80	5.8	0.1	0.25	0.32	0.27	0.16	0.080	0.045	0.14
Salmon Arm	425	-19	-24	33	21	3650	13	48	400	0.47	525	80	3.5	0.1	0.30	0.39	0.27	0.16	0.082	0.046	0.14
Sandspit	5	-4	-6	18	15	3450	13	86	1300	1.47	1350	500	1.8	0.4	0.60	0.78	0.56	0.48	0.40	0.20	0.29
Sechelt	25	-6	-8	27	20	2680	10	75	1140	1.27	1200	160	2.2	0.4	0.37	0.48	0.87	0.61	0.33	0.17	0.43
Sidney	10	-4	-6	26	18	2850	8	96	825	0.97	850	160	1.1	0.2	0.33	0.42	1.2	0.80	0.37	0.19	0.60
Smith River	660	-45	-47	26	17	7100	10	64	300	0.58	500	40	2.8	0.1	0.23	0.30	0.51	0.31	0.15	0.086	0.25
Smithers	500	-29	-31	26	17	5040	13	60	325	0.60	500	120	3.2	0.2	0.31	0.40	0.11	0.080	0.053	0.034	0.059
Sooke	20	-1	-3	21	16	2900	9	130	1250	1.37	1280	220	1.3	0.3	0.37	0.48	1.1	0.75	0.36	0.18	0.53
Squamish	5	-9	-11	29	20	2950	10	140	2050	2.12	2200	160	3.2	0.7	0.39	0.50	0.72	0.52	0.30	0.16	0.33
Stewart	10	-17	-20	25	16	4350	13	135	1300	1.47	1900	180	7.9	0.8	0.28	0.36	0.30	0.19	0.11	0.063	0.15

Table C-2 (Continued)

Province and Location	Elev., m	Design Temperature				Degree-Days Below 18°C	15 Min. Rain, mm	One Day Rain, 1/50, mm	Ann. Rain, mm	Moist. Index	Ann. Tot. Ppn., mm	Driving Rain Wind Pres- sures, Pa, 1/5	Snow Load, kPa, 1/50		Hourly Wind Pressures, kPa		Seismic Data ⁽¹⁾					
		January		July 2.5%									S _s	S _t	1/10	1/50	S _a (0.2)	S _a (0.5)	S _a (1.0)	S _a (2.0)	PGA	
		2.5% °C	1% °C	Dry °C	Wet °C																	
Tahsis	25	-4	-6	26	18	3150	13	200	3845	3.91	3900	300	1.1	0.4	0.26	0.34	0.87	0.69	0.36	0.16	0.38	
Taylor	515	-35	-37	26	18	5720	15	72	320	0.49	450	100	2.3	0.1	0.31	0.40	0.095	0.060	0.031	0.018	0.053	
Terrace	60	-19	-21	27	17	4150	13	120	950	1.08	1150	200	5.4	0.6	0.28	0.36	0.34	0.21	0.11	0.065	0.16	
Tofino	10	-2	-4	20	16	3150	13	193	3275	3.36	3300	300	1.1	0.4	0.53	0.68	1.2	0.94	0.48	0.21	0.52	
Trail	440	-14	-17	33	20	3600	10	54	580	0.65	700	60	4.1	0.1	0.27	0.35	0.27	0.16	0.081	0.045	0.14	
Ucluelet	5	-2	-4	18	16	3120	13	180	3175	3.26	3200	280	1.0	0.4	0.53	0.68	1.2	0.94	0.48	0.21	0.53	
Vancouver Region																						
Burnaby (Simon Fraser Univ.)	330	-7	-9	25	17	3100	10	150	1850	1.93	1950	160	2.9	0.7	0.36	0.47	0.93	0.63	0.32	0.17	0.46	
Cloverdale	10	-8	-10	29	20	2700	10	112	1350	1.44	1400	160	2.5	0.2	0.34	0.44	1.1	0.72	0.33	0.17	0.54	
Haney	10	-9	-11	30	20	2840	10	134	1800	1.86	1950	160	2.4	0.2	0.34	0.44	0.97	0.65	0.32	0.17	0.48	
Ladner	3	-6	-8	27	19	2600	10	80	1000	1.14	1050	160	1.3	0.2	0.36	0.46	1.1	0.73	0.35	0.18	0.54	
Langley	15	-8	-10	29	20	2700	10	112	1450	1.53	1500	160	2.4	0.2	0.34	0.44	1.1	0.71	0.33	0.17	0.53	
New Westminster	10	-8	-10	29	19	2800	10	134	1500	1.59	1575	160	2.3	0.2	0.34	0.44	0.99	0.66	0.33	0.17	0.49	
North Vancouver	135	-7	-9	26	19	2910	12	150	2000	2.07	2100	160	3.0	0.3	0.35	0.45	0.88	0.61	0.33	0.17	0.44	
Richmond	5	-7	-9	27	19	2800	10	86	1070	1.20	1100	160	1.5	0.2	0.35	0.45	1.0	0.68	0.34	0.18	0.50	
Surrey (88 Ave & 156 St.)	90	-8	-10	29	20	2750	10	128	1500	1.58	1575	160	2.4	0.3	0.34	0.44	1.0	0.69	0.33	0.17	0.52	
Vancouver (City Hall)	40	-7	-9	28	20	2825	10	112	1325	1.44	1400	160	1.8	0.2	0.35	0.45	0.94	0.64	0.33	0.17	0.46	
Vancouver (Granville & 41 Ave)	120	-6	-8	28	20	2925	10	107	1325	1.44	1400	160	1.9	0.3	0.35	0.45	0.95	0.65	0.34	0.17	0.47	
West Vancouver	45	-7	-9	28	19	2950	12	150	1600	1.69	1700	160	2.4	0.2	0.37	0.48	0.88	0.62	0.33	0.17	0.43	
Vernon	405	-20	-23	33	20	3600	13	43	350	0.41	400	80	2.2	0.1	0.31	0.40	0.27	0.17	0.083	0.047	0.14	
Victoria Region																						
Victoria (Gonzales Hts)	65	-4	-6	24	17	2700	9	91	600	0.82	625	220	1.5	0.3	0.44	0.57	1.2	0.82	0.38	0.19	0.61	
Victoria (Mt Tolmie)	125	-6	-8	24	16	2700	9	91	775	0.96	800	220	2.1	0.3	0.48	0.63	1.2	0.82	0.38	0.19	0.61	

Table C-2 (Continued)

Province and Location	Elev., m	Design Temperature				Degree-Days Below 18°C	15 Min. Rain, mm	One Day Rain, 1/50, mm	Ann. Rain, mm	Moist. Index	Ann. Tot. Ppn., mm	Driving Rain Wind Pres- sures, Pa, 1/5	Snow Load, kPa, 1/50		Hourly Wind Pressures, kPa		Seismic Data ⁽¹⁾				
		January		July 2.5%									S _e	S _i	1/10	1/50	S _a (0.2)	S _a (0.5)	S _a (1.0)	S _a (2.0)	PGA
		2.5% °C	1% °C	Dry °C	Wet °C																
Victoria	10	-4	-6	24	17	2650	8	91	800	0.98	825	220	1.1	0.2	0.44	0.57	1.2	0.82	0.38	0.18	0.61
Whistler	665	-17	-20	30	20	4180	10	85	845	0.99	1215	160	9.5	0.9	0.25	0.32	0.63	0.47	0.28	0.16	0.29
White Rock	30	-5	-7	25	20	2620	10	80	1065	1.17	1100	160	2.0	0.2	0.34	0.44	1.1	0.76	0.35	0.18	0.57
Williams Lake	615	-30	-33	29	17	4400	10	48	350	0.47	425	80	2.4	0.2	0.27	0.35	0.28	0.16	0.096	0.056	0.14
Youbou	200	-5	-8	31	19	3050	10	161	2000	2.09	2100	200	3.9	0.7	0.25	0.32	1.0	0.69	0.35	0.18	0.50
Alberta																					
Athabasca	515	-35	-38	27	19	6000	18	86	370	0.58	480	80	1.5	0.1	0.28	0.36	0.095	0.057	0.026	0.008	0.036
Banff	1400	-31	-33	27	16	5500	18	65	300	0.58	500	120	3.6	0.1	0.25	0.32	0.24	0.14	0.066	0.037	0.12
Barrhead	645	-33	-36	27	19	5740	20	86	375	0.58	475	100	1.7	0.1	0.34	0.44	0.095	0.057	0.026	0.009	0.036
Beaverlodge	730	-36	-39	28	18	5700	20	86	315	0.49	470	100	2.4	0.1	0.28	0.36	0.13	0.078	0.039	0.022	0.070
Brooks	760	-32	-34	32	20	4880	18	86	260	0.26	340	220	1.2	0.1	0.40	0.52	0.095	0.057	0.026	0.012	0.036
Calgary	1045	-30	-32	28	17	5000	23	103	325	0.37	425	220	1.1	0.1	0.37	0.48	0.15	0.084	0.041	0.023	0.088
Campsie	660	-33	-36	27	19	5750	20	86	375	0.58	475	100	1.7	0.1	0.34	0.44	0.095	0.057	0.026	0.009	0.036
Camrose	740	-33	-35	29	19	5500	20	86	355	0.54	470	160	2.0	0.1	0.30	0.39	0.095	0.057	0.026	0.008	0.036
Canmore	1320	-31	-33	28	17	5400	18	86	325	0.57	500	120	3.5	0.1	0.29	0.37	0.24	0.14	0.065	0.036	0.12
Cardston	1130	-29	-32	30	19	4700	20	108	340	0.38	550	140	1.5	0.1	0.56	0.72	0.18	0.11	0.054	0.031	0.095
Claresholm	1030	-30	-32	30	18	4680	15	97	310	0.35	440	200	1.3	0.1	0.45	0.58	0.15	0.092	0.046	0.027	0.092
Cold Lake	540	-35	-38	28	19	5860	18	81	320	0.53	430	140	1.7	0.1	0.29	0.38	0.095	0.057	0.026	0.008	0.036
Coleman	1320	-31	-34	29	18	5210	15	86	400	0.46	550	120	2.7	0.3	0.48	0.63	0.24	0.13	0.066	0.037	0.12
Coronation	790	-32	-34	30	19	5640	20	92	300	0.45	400	200	2.2	0.1	0.29	0.37	0.095	0.057	0.026	0.008	0.036
Cowley	1175	-29	-32	29	18	4810	15	92	310	0.36	525	140	1.6	0.1	0.78	1.01	0.20	0.12	0.057	0.033	0.10
Drumheller	685	-32	-34	30	18	5050	20	86	300	0.39	375	220	1.2	0.1	0.34	0.44	0.095	0.057	0.026	0.012	0.037
Edmonton	645	-30	-33	28	19	5120	23	97	360	0.48	460	160	1.7	0.1	0.35	0.45	0.095	0.057	0.026	0.008	0.036
Edson	920	-34	-37	27	18	5750	18	81	450	0.63	570	100	2.1	0.1	0.36	0.46	0.15	0.083	0.038	0.021	0.083
Embarras Portage	220	-41	-43	28	19	7100	12	81	250	0.56	390	80	1.9	0.1	0.29	0.37	0.095	0.057	0.026	0.008	0.036
Fairview	670	-37	-40	27	18	5840	15	86	330	0.51	450	100	2.6	0.1	0.27	0.35	0.095	0.057	0.026	0.011	0.036
Fort MacLeod	945	-30	-32	31	19	4600	16	97	300	0.35	425	180	1.2	0.1	0.53	0.68	0.16	0.097	0.050	0.028	0.094
Fort McMurray	255	-38	-40	28	19	6250	13	86	340	0.52	460	60	1.4	0.1	0.27	0.35	0.095	0.057	0.026	0.008	0.036

Table C-2 (Continued)

Province and Location	Elev., m	Design Temperature				Degree-Days Below 18°C	15 Min. Rain, mm	One Day Rain, 1/50, mm	Ann. Rain, mm	Moist. Index	Ann. Tot. Ppn., mm	Driving Rain Wind Pres- sures, Pa, 1/5	Snow Load, kPa, 1/50		Hourly Wind Pressures, kPa		Seismic Data ⁽¹⁾				
		January		July 2.5%									S _s	S _t	1/10	1/50	S _a (0.2)	S _a (0.5)	S _a (1.0)	S _a (2.0)	PGA
		2.5% °C	1% °C	Dry °C	Wet °C																
Fort Saskatchewan	610	-32	-35	28	19	5420	20	86	350	0.49	425	140	1.6	0.1	0.33	0.43	0.095	0.057	0.026	0.008	0.036
Fort Vermilion	270	-41	-43	28	18	6700	13	70	250	0.53	380	60	2.1	0.1	0.23	0.30	0.095	0.057	0.026	0.008	0.036
Grande Prairie	650	-36	-39	27	18	5790	20	86	315	0.49	450	120	2.2	0.1	0.33	0.43	0.095	0.061	0.031	0.018	0.054
Habay	335	-41	-43	28	18	6750	13	70	275	0.54	425	60	2.4	0.1	0.23	0.30	0.095	0.057	0.026	0.010	0.036
Hardisty	615	-33	-36	30	19	5640	20	81	325	0.48	425	140	1.7	0.1	0.28	0.36	0.095	0.057	0.026	0.008	0.036
High River	1040	-31	-32	28	17	4900	18	97	300	0.36	425	200	1.3	0.1	0.50	0.65	0.15	0.087	0.043	0.024	0.090
Hinton	990	-34	-38	27	17	5500	13	81	375	0.55	500	100	2.9	0.1	0.36	0.46	0.24	0.14	0.064	0.036	0.12
Jasper	1060	-31	-34	28	17	5300	12	76	300	0.52	400	80	3.3	0.1	0.25	0.32	0.24	0.14	0.068	0.038	0.12
Keg River	420	-40	-42	28	18	6520	13	70	310	0.54	450	80	2.4	0.1	0.23	0.30	0.095	0.057	0.026	0.008	0.036
Lac la Biche	560	-35	-38	28	19	6100	15	86	375	0.58	475	80	1.6	0.1	0.28	0.36	0.095	0.057	0.026	0.008	0.036
Lacombe	855	-33	-36	28	19	5500	23	92	350	0.53	450	180	2.1	0.1	0.31	0.40	0.095	0.057	0.026	0.012	0.042
Lethbridge	910	-30	-32	31	19	4500	20	97	250	0.26	390	200	1.2	0.1	0.51	0.66	0.15	0.087	0.044	0.026	0.087
Manning	465	-39	-41	27	18	6300	13	76	280	0.49	390	80	2.3	0.1	0.23	0.30	0.095	0.057	0.026	0.008	0.036
Medicine Hat	705	-31	-34	32	19	4540	23	92	250	0.25	325	220	1.1	0.1	0.37	0.48	0.095	0.057	0.026	0.010	0.036
Peace River	330	-37	-40	27	18	6050	15	81	300	0.50	390	100	2.2	0.1	0.25	0.32	0.095	0.057	0.026	0.008	0.036
Pincher Creek	1130	-29	-32	29	18	4740	16	103	325	0.37	575	140	1.5	0.1	0.75	0.96	0.19	0.11	0.058	0.033	0.10
Ranfurly	670	-34	-37	29	19	5700	18	92	325	0.50	420	100	1.9	0.1	0.28	0.36	0.095	0.057	0.026	0.008	0.036
Red Deer	855	-32	-35	28	19	5550	20	97	375	0.54	475	200	2.0	0.1	0.31	0.40	0.095	0.057	0.026	0.014	0.050
Rocky Mountain House	985	-32	-34	27	18	5640	20	92	425	0.59	550	120	1.9	0.1	0.28	0.36	0.15	0.080	0.038	0.021	0.085
Slave Lake	590	-35	-38	26	19	5850	15	81	380	0.62	500	80	1.9	0.1	0.29	0.37	0.095	0.057	0.026	0.008	0.036
Stettler	820	-32	-34	30	19	5300	20	97	370	0.53	450	200	2.2	0.1	0.28	0.36	0.095	0.057	0.026	0.009	0.036
Stony Plain	710	-32	-35	28	19	5300	23	97	410	0.52	540	120	1.7	0.1	0.35	0.45	0.095	0.057	0.026	0.009	0.036
Suffield	755	-31	-34	32	20	4770	20	86	230	0.23	325	220	1.3	0.1	0.38	0.49	0.095	0.057	0.026	0.011	0.036
Taber	815	-31	-33	31	19	4580	20	92	260	0.26	370	200	1.2	0.1	0.48	0.63	0.097	0.059	0.032	0.018	0.064
Turner Valley	1215	-31	-32	28	17	5220	20	97	350	0.48	600	180	1.4	0.1	0.50	0.65	0.15	0.091	0.045	0.025	0.092
Valleyview	700	-37	-40	27	18	5600	18	86	360	0.54	490	80	2.3	0.1	0.33	0.42	0.095	0.057	0.026	0.012	0.036
Vegreville	635	-34	-37	29	19	5780	18	86	325	0.50	410	100	1.9	0.1	0.28	0.36	0.095	0.057	0.026	0.008	0.036

Table C-2 (Continued)

Province and Location	Elev., m	Design Temperature				Degree- Days Below 18°C	15 Min. Rain, mm	One Day Rain, 1/50, mm	Ann. Rain, mm	Moist. Index	Ann. Tot. Ppn., mm	Driving Rain Wind Pres- sures, Pa, 1/5	Snow Load, kPa, 1/50		Hourly Wind Pressures, kPa		Seismic Data ⁽¹⁾				
		January		July 2.5%									S _a	S _t	1/10	1/50	S _a (0.2)	S _a (0.5)	S _a (1.0)	S _a (2.0)	PGA
		2.5% °C	1% °C	Dry °C	Wet °C																
Vermilion	580	-35	-38	29	19	5740	18	86	310	0.53	410	100	1.7	0.1	0.28	0.36	0.095	0.057	0.026	0.008	0.036
Wagner	585	-35	-38	26	19	5850	15	81	380	0.62	500	80	1.9	0.1	0.29	0.37	0.095	0.057	0.026	0.008	0.036
Wainwright	675	-33	-36	29	19	5700	20	81	310	0.47	425	120	2.0	0.1	0.28	0.36	0.095	0.057	0.026	0.008	0.036
Wetaskiwin	760	-33	-35	29	19	5500	23	86	400	0.57	500	160	2.0	0.1	0.30	0.39	0.095	0.057	0.026	0.009	0.036
Whitecourt	690	-33	-36	27	19	5650	20	97	440	0.63	550	80	1.9	0.1	0.29	0.37	0.095	0.057	0.026	0.012	0.040
Wimborne	975	-31	-34	29	18	5310	23	92	325	0.48	450	200	1.6	0.1	0.31	0.40	0.095	0.057	0.026	0.015	0.054
Saskatchewan																					
Assiniboia	740	-32	-34	31	21	5180	25	81	290	0.33	375	240	1.6	0.1	0.38	0.49	0.14	0.072	0.028	0.010	0.061
Battrum	700	-32	-34	32	20	5080	23	81	270	0.35	350	260	1.2	0.1	0.42	0.54	0.095	0.057	0.026	0.008	0.036
Biggar	645	-34	-36	30	20	5720	23	81	270	0.39	350	180	2.1	0.1	0.35	0.45	0.095	0.057	0.026	0.008	0.036
Broadview	600	-34	-35	30	21	5760	25	103	320	0.49	420	160	1.7	0.1	0.36	0.46	0.095	0.057	0.026	0.008	0.036
Dafoe	530	-35	-37	29	21	5860	20	92	300	0.46	380	140	1.7	0.1	0.29	0.37	0.095	0.057	0.026	0.008	0.036
Dundurn	525	-35	-37	30	21	5600	23	86	275	0.40	380	180	1.5	0.1	0.36	0.46	0.095	0.057	0.026	0.008	0.036
Estevan	565	-32	-34	32	22	5340	28	92	330	0.43	420	200	1.6	0.1	0.40	0.52	0.13	0.066	0.026	0.010	0.055
Hudson Bay	370	-36	-38	29	21	6280	20	81	340	0.59	450	80	2.0	0.1	0.29	0.37	0.095	0.057	0.026	0.008	0.036
Humboldt	565	-36	-38	28	21	6000	20	86	320	0.48	375	140	2.1	0.1	0.30	0.39	0.095	0.057	0.026	0.008	0.036
Island Falls	305	-39	-41	27	20	7100	18	76	370	0.62	510	80	2.1	0.1	0.27	0.35	0.095	0.057	0.026	0.008	0.036
Kamsack	455	-34	-37	29	22	6040	20	97	360	0.55	450	120	2.1	0.2	0.31	0.40	0.095	0.057	0.026	0.008	0.036
Kindersley	685	-33	-35	31	20	5550	23	81	260	0.38	325	200	1.4	0.1	0.36	0.46	0.095	0.057	0.026	0.008	0.036
Lloydminster	645	-34	-37	28	20	5880	18	81	310	0.53	430	120	2.0	0.1	0.31	0.40	0.095	0.057	0.026	0.008	0.036
Maple Creek	765	-31	-34	31	20	4780	25	81	275	0.28	380	220	1.2	0.1	0.35	0.45	0.095	0.057	0.026	0.008	0.036
Meadow Lake	480	-38	-40	28	20	6280	18	81	320	0.53	450	120	1.7	0.1	0.31	0.40	0.095	0.057	0.026	0.008	0.036
Melfort	455	-36	-38	28	21	6050	20	81	310	0.50	410	120	2.1	0.1	0.28	0.36	0.095	0.057	0.026	0.008	0.036
Melville	550	-34	-36	29	21	5880	23	97	340	0.52	410	160	1.7	0.1	0.31	0.40	0.095	0.057	0.026	0.008	0.036
Moose Jaw	545	-32	-34	31	21	5270	25	86	270	0.33	360	200	1.4	0.1	0.40	0.52	0.098	0.057	0.026	0.008	0.038
Nipawin	365	-37	-39	28	21	6300	20	76	340	0.56	450	100	2.0	0.1	0.29	0.38	0.095	0.057	0.026	0.008	0.036
North Battleford	545	-34	-36	29	20	5900	20	81	280	0.46	370	120	1.7	0.1	0.36	0.46	0.095	0.057	0.026	0.008	0.036
Prince Albert	435	-37	-40	28	21	6100	20	81	320	0.51	410	140	1.9	0.1	0.29	0.38	0.095	0.057	0.026	0.008	0.036

Table C-2 (Continued)

Province and Location	Elev., m	Design Temperature				Degree-Days Below 18°C	15 Min. Rain, mm	One Day Rain, 1/50, mm	Ann. Rain, mm	Moist. Index	Ann. Tot. Ppn., mm	Driving Rain Wind Pres- sures, Pa, 1/5	Snow Load, kPa, 1/50		Hourly Wind Pressures, kPa		Seismic Data ⁽¹⁾					
		January		July 2.5%									S _s	S _r	1/10	1/50	S _a (0.2)	S _a (0.5)	S _a (1.0)	S _a (2.0)	PGA	
		2.5% °C	1% °C	Dry °C	Wet °C																	
Qu'Appelle	645	-34	-36	30	22	5620	25	97	340	0.45	430	160	1.7	0.1	0.33	0.42	0.095	0.057	0.026	0.008	0.036	
Regina	575	-34	-36	31	21	5600	28	103	300	0.39	365	200	1.4	0.1	0.38	0.49	0.10	0.057	0.026	0.008	0.040	
Rosetown	595	-34	-36	31	20	5620	23	81	260	0.37	330	200	1.7	0.1	0.38	0.49	0.095	0.057	0.026	0.008	0.036	
Saskatoon	500	-35	-37	30	21	5700	23	86	265	0.41	350	160	1.7	0.1	0.33	0.43	0.095	0.057	0.026	0.008	0.036	
Scott	645	-34	-36	30	20	5960	20	81	270	0.41	360	140	1.9	0.1	0.35	0.45	0.095	0.057	0.026	0.008	0.036	
Strasbourg	545	-34	-36	30	22	5600	25	92	300	0.41	390	180	1.5	0.1	0.33	0.42	0.095	0.057	0.026	0.008	0.036	
Swift Current	750	-31	-34	31	20	5150	25	81	260	0.34	350	240	1.4	0.1	0.42	0.54	0.095	0.057	0.026	0.008	0.036	
Uranium City	265	-42	-44	26	19	7500	12	54	300	0.59	360	100	2.0	0.1	0.28	0.36	0.095	0.057	0.026	0.008	0.036	
Weyburn	575	-33	-35	31	23	5400	28	97	320	0.40	400	200	1.4	0.1	0.37	0.48	0.19	0.088	0.034	0.012	0.095	
Yorkton	510	-34	-37	29	21	6000	23	97	350	0.54	440	140	1.7	0.1	0.31	0.40	0.095	0.057	0.026	0.008	0.036	
Manitoba																						
Beausejour	245	-33	-35	29	23	5680	28	103	430	0.61	530	180	1.9	0.2	0.32	0.41	0.095	0.057	0.026	0.008	0.036	
Boissevain	510	-32	-34	30	23	5500	28	119	390	0.54	510	180	2.2	0.2	0.40	0.52	0.095	0.057	0.026	0.008	0.036	
Brandon	395	-33	-35	30	22	5760	28	108	375	0.56	460	180	2.1	0.2	0.38	0.49	0.095	0.057	0.026	0.008	0.036	
Churchill	10	-38	-40	25	18	8950	12	76	265	0.82	410	260	2.8	0.2	0.43	0.55	0.095	0.057	0.026	0.008	0.036	
Dauphin	295	-33	-35	30	22	5900	28	103	400	0.56	490	160	1.9	0.2	0.31	0.40	0.095	0.057	0.026	0.008	0.036	
Flin Flon	300	-38	-40	27	20	6440	18	81	340	0.59	475	80	2.2	0.2	0.27	0.35	0.095	0.057	0.026	0.008	0.036	
Gimli	220	-34	-36	29	23	5800	28	108	410	0.65	530	180	1.9	0.2	0.31	0.40	0.095	0.057	0.026	0.008	0.036	
Island Lake	240	-36	-38	27	20	6900	18	86	380	0.67	550	80	2.6	0.2	0.29	0.37	0.095	0.057	0.026	0.008	0.036	
Lac du Bonnet	260	-34	-36	29	23	5730	28	103	445	0.65	560	180	1.9	0.2	0.29	0.37	0.095	0.057	0.026	0.008	0.036	
Lynn Lake	350	-40	-42	27	19	7770	18	86	310	0.62	490	100	2.4	0.2	0.29	0.37	0.095	0.057	0.026	0.008	0.036	
Morden	300	-31	-33	30	24	5400	28	119	420	0.55	520	180	2.2	0.2	0.40	0.52	0.095	0.057	0.026	0.008	0.036	
Neepawa	365	-32	-34	29	23	5760	28	108	410	0.58	470	180	2.2	0.2	0.34	0.44	0.095	0.057	0.026	0.008	0.036	
Pine Falls	220	-34	-36	28	23	5900	25	97	440	0.66	420	180	1.9	0.2	0.30	0.39	0.095	0.057	0.026	0.008	0.036	
Portage la Prairie	260	-31	-33	30	23	5600	28	108	390	0.51	525	180	2.1	0.2	0.36	0.46	0.095	0.057	0.026	0.008	0.036	
Rivers	465	-34	-36	29	23	5840	28	108	370	0.56	460	180	2.1	0.2	0.36	0.46	0.095	0.057	0.026	0.008	0.036	
Sandilands	365	-32	-34	29	23	5650	28	113	460	0.58	550	180	2.2	0.2	0.31	0.40	0.095	0.057	0.026	0.008	0.036	
Selkirk	225	-33	-35	29	23	5700	28	108	420	0.61	500	180	1.9	0.2	0.32	0.41	0.095	0.057	0.026	0.008	0.036	

Table C-2 (Continued)

Province and Location	Elev., m	Design Temperature				Degree- Days Below 18°C	15 Min. Rain, mm	One Day Rain, 1/50, mm	Ann. Rain, mm	Moist. Index	Ann. Tot. Ppn., mm	Driving Rain Wind Pres- sures, Pa, 1/5	Snow Load, kPa, 1/50		Hourly Wind Pressures, kPa		Seismic Data ⁽¹⁾					
		January		July 2.5%									S _a	S _t	1/10	1/50	S _a (0.2)	S _a (0.5)	S _a (1.0)	S _a (2.0)	PGA	
		2.5% °C	1% °C	Dry °C	Wet °C																	
Split Lake	175	-38	-40	27	19	7900	18	76	325	0.66	500	120	2.5	0.2	0.30	0.39	0.095	0.057	0.026	0.008	0.036	
Steinbach	270	-33	-35	29	23	5700	28	108	440	0.58	500	180	2.0	0.2	0.31	0.40	0.095	0.057	0.026	0.008	0.036	
Swan River	335	-34	-37	29	22	6100	20	92	370	0.58	500	120	2.0	0.2	0.27	0.35	0.095	0.057	0.026	0.008	0.036	
The Pas	270	-36	-38	28	21	6480	18	81	330	0.59	450	160	2.1	0.2	0.29	0.37	0.095	0.057	0.026	0.008	0.036	
Thompson	205	-40	-43	27	19	7600	18	86	350	0.64	540	100	2.4	0.2	0.28	0.36	0.095	0.057	0.026	0.008	0.036	
Virden	435	-33	-35	30	23	5620	28	108	350	0.53	460	180	2.0	0.2	0.36	0.46	0.095	0.057	0.026	0.008	0.036	
Winnipeg	235	-33	-35	30	23	5670	28	108	415	0.58	500	180	1.9	0.2	0.35	0.45	0.095	0.057	0.026	0.008	0.036	
Ontario																						
Ailsa Craig	230	-17	-19	30	23	3840	25	103	800	0.93	950	180	2.2	0.4	0.39	0.50	0.13	0.082	0.052	0.016	0.045	
Ajax	95	-20	-22	30	23	3820	23	92	760	0.90	825	160	1.0	0.4	0.37	0.48	0.18	0.12	0.070	0.022	0.074	
Alexandria	80	-24	-26	30	23	4600	25	103	800	0.91	975	160	2.4	0.4	0.31	0.40	0.64	0.31	0.14	0.047	0.32	
Alliston	220	-23	-25	29	23	4200	28	113	690	0.81	875	120	2.0	0.4	0.28	0.36	0.15	0.099	0.062	0.020	0.046	
Almonte	120	-26	-28	30	23	4620	25	97	730	0.84	800	140	2.5	0.4	0.32	0.41	0.55	0.27	0.13	0.042	0.28	
Armstrong	340	-37	-40	28	21	6500	23	97	525	0.75	725	100	2.7	0.4	0.23	0.30	0.095	0.057	0.026	0.008	0.036	
Arnprior	85	-27	-29	30	23	4680	23	86	630	0.76	775	140	2.5	0.4	0.29	0.37	0.61	0.29	0.13	0.044	0.31	
Atikokan	400	-33	-35	29	22	5750	25	103	570	0.77	760	100	2.4	0.3	0.23	0.30	0.095	0.057	0.026	0.008	0.036	
Attawapiskat	10	-37	-39	28	21	7100	18	81	450	0.79	650	160	2.8	0.3	0.32	0.41	0.11	0.057	0.026	0.008	0.053	
Aurora	270	-21	-23	30	23	4210	28	108	700	0.81	800	140	2.0	0.4	0.34	0.44	0.16	0.11	0.065	0.021	0.053	
Bancroft	365	-28	-31	29	23	4740	25	92	720	0.85	900	100	3.1	0.4	0.25	0.32	0.26	0.17	0.089	0.030	0.089	
Barrie	245	-24	-26	29	23	4380	28	97	700	0.83	900	120	2.5	0.4	0.28	0.36	0.15	0.11	0.065	0.021	0.044	
Barriefield	100	-22	-24	28	23	3990	23	108	780	0.96	950	160	2.1	0.4	0.36	0.47	0.30	0.18	0.099	0.031	0.12	
Beaverton	240	-24	-26	30	23	4300	25	108	720	0.87	950	120	2.2	0.4	0.28	0.36	0.16	0.12	0.070	0.023	0.047	
Belleville	90	-22	-24	29	23	3910	23	97	760	0.89	850	180	1.7	0.4	0.33	0.43	0.25	0.16	0.088	0.028	0.10	
Belmont	260	-17	-19	30	24	3840	25	97	850	0.95	950	180	1.7	0.4	0.36	0.47	0.16	0.097	0.056	0.017	0.086	
Kitchenuhmaykoosib (Big Trout Lake)	215	-38	-40	26	20	7450	18	92	400	0.75	600	150	3.2	0.2	0.33	0.42	0.095	0.057	0.026	0.008	0.036	
CFB Borden	225	-23	-25	29	23	4300	28	103	690	0.82	875	120	2.2	0.4	0.28	0.36	0.14	0.10	0.063	0.020	0.045	
Bracebridge	310	-26	-28	29	23	4800	25	103	830	0.95	1050	120	3.1	0.4	0.27	0.35	0.18	0.12	0.072	0.024	0.056	
Bradford	240	-23	-25	30	23	4280	28	108	680	0.80	800	120	2.1	0.4	0.28	0.36	0.15	0.10	0.065	0.021	0.049	

Table C-2 (Continued)

Province and Location	Elev., m	Design Temperature				Degree-Days Below 18°C	15 Min. Rain, mm	One Day Rain, 1/50, mm	Ann. Rain, mm	Moist. Index	Ann. Tot. Ppn., mm	Driving Rain Wind Pres- sures, Pa, 1/5	Snow Load, kPa, 1/50		Hourly Wind Pressures, kPa		Seismic Data ⁽¹⁾				
		January		July 2.5%									S _s	S _t	1/10	1/50	S _a (0.2)	S _a (0.5)	S _a (1.0)	S _a (2.0)	PGA
		2.5% °C	1% °C	Dry °C	Wet °C																
Brampton	215	-19	-21	30	23	4100	28	119	720	0.81	820	140	1.3	0.4	0.34	0.44	0.21	0.12	0.063	0.020	0.11
Brantford	205	-18	-20	30	23	3900	23	103	780	0.89	850	160	1.3	0.4	0.33	0.42	0.19	0.11	0.061	0.019	0.089
Brighton	95	-21	-23	29	23	4000	23	94	760	0.90	850	160	1.6	0.4	0.37	0.48	0.24	0.15	0.083	0.027	0.099
Brockville	85	-23	-25	29	23	4060	25	103	770	0.89	975	180	2.2	0.4	0.34	0.44	0.35	0.22	0.12	0.036	0.15
Burk's Falls	305	-26	-28	29	22	5020	25	97	810	0.94	1010	120	2.7	0.4	0.27	0.35	0.21	0.14	0.075	0.026	0.074
Burlington	80	-17	-19	31	23	3740	23	103	770	0.91	850	160	0.9	0.4	0.36	0.46	0.32	0.17	0.064	0.022	0.18
Cambridge	295	-18	-20	29	23	4100	25	113	800	0.91	890	160	1.6	0.4	0.28	0.36	0.18	0.10	0.060	0.019	0.073
Campbellford	150	-23	-26	30	23	4280	25	97	730	0.85	850	160	1.7	0.4	0.32	0.41	0.23	0.15	0.085	0.027	0.084
Cannington	255	-24	-26	30	23	4310	25	108	740	0.85	950	120	2.2	0.4	0.28	0.36	0.17	0.12	0.070	0.023	0.048
Carleton Place	135	-25	-27	30	23	4600	25	97	730	0.84	850	160	2.5	0.4	0.32	0.41	0.49	0.25	0.12	0.039	0.23
Cavan	200	-23	-25	30	23	4400	25	97	740	0.86	850	140	2.0	0.4	0.34	0.44	0.19	0.13	0.076	0.024	0.061
Centralia	260	-17	-19	30	23	3800	25	103	820	0.95	1000	180	2.3	0.4	0.38	0.49	0.13	0.080	0.052	0.016	0.041
Chapleau	425	-35	-38	27	21	5900	20	97	530	0.72	850	80	4.0	0.4	0.23	0.30	0.095	0.057	0.037	0.013	0.036
Chatham	180	-16	-18	31	24	3470	28	103	800	0.86	850	180	1.0	0.4	0.33	0.43	0.16	0.092	0.050	0.015	0.088
Chesley	275	-19	-21	29	22	4320	28	103	810	0.94	1125	140	2.8	0.4	0.37	0.48	0.12	0.082	0.053	0.018	0.037
Clinton	280	-17	-19	29	23	4150	25	103	810	0.94	1000	160	2.6	0.4	0.38	0.49	0.12	0.078	0.050	0.016	0.038
Coboconk	270	-25	-27	30	23	4500	25	108	740	0.87	950	120	2.5	0.4	0.27	0.35	0.18	0.13	0.074	0.025	0.055
Cobourg	90	-21	-23	29	23	3980	23	94	760	0.90	825	160	1.2	0.4	0.38	0.49	0.22	0.14	0.079	0.025	0.096
Cochrane	245	-34	-36	29	21	6200	20	92	575	0.77	875	80	2.8	0.3	0.27	0.35	0.18	0.098	0.054	0.018	0.094
Colborne	105	-21	-23	29	23	3980	23	94	760	0.90	850	160	1.6	0.4	0.38	0.49	0.23	0.14	0.081	0.026	0.098
Collingwood	190	-21	-23	29	23	4180	28	97	720	0.87	950	160	2.7	0.4	0.30	0.39	0.13	0.097	0.060	0.020	0.040
Cornwall	35	-23	-25	30	23	4250	25	103	780	0.89	960	180	2.2	0.4	0.32	0.41	0.62	0.31	0.14	0.046	0.31
Corunna	185	-16	-18	31	24	3600	25	100	760	0.87	800	180	1.0	0.4	0.36	0.47	0.12	0.074	0.047	0.015	0.040
Deep River	145	-29	-32	30	22	4900	23	92	650	0.82	850	100	2.5	0.4	0.27	0.35	0.63	0.30	0.13	0.043	0.32
Deseronto	85	-22	-24	29	23	4070	23	92	760	0.89	900	160	1.9	0.4	0.33	0.43	0.27	0.17	0.092	0.029	0.11
Dorchester	260	-18	-20	30	24	3900	28	103	850	0.96	950	180	1.9	0.4	0.36	0.47	0.16	0.096	0.056	0.017	0.081
Dorion	200	-33	-35	28	21	5950	20	103	550	0.77	725	160	2.8	0.4	0.30	0.39	0.095	0.057	0.026	0.008	0.036
Dresden	185	-16	-18	31	24	3750	28	97	760	0.84	820	180	1.0	0.4	0.33	0.43	0.15	0.088	0.050	0.015	0.078

Table C-2 (Continued)

Province and Location	Elev., m	Design Temperature				Degree- Days Below 18°C	15 Min. Rain, mm	One Day Rain, 1/50, mm	Ann. Rain, mm	Moist. Index	Ann. Tot Ppn., mm	Driving Rain Wind Pres- sures, Pa, 1/5	Snow Load, kPa, 1/50		Hourly Wind Pressures, kPa		Seismic Data ⁽¹⁾				
		January		July 2.5%									S _s	S _r	1/10	1/50	S _a (0.2)	S _a (0.5)	S _a (1.0)	S _a (2.0)	PGA
		2.5% °C	1% °C	Dry °C	Wet °C																
Dryden	370	-34	-36	28	22	5850	25	97	550	0.70	700	120	2.4	0.3	0.23	0.30	0.095	0.057	0.026	0.008	0.036
Dundalk	525	-22	-24	29	22	4700	28	108	750	0.89	1080	150	3.4	0.4	0.33	0.42	0.13	0.091	0.058	0.019	0.043
Dunnville	175	-15	-17	30	24	3660	23	108	830	0.95	950	160	2.0	0.4	0.36	0.46	0.31	0.16	0.063	0.021	0.17
Durham	340	-20	-22	29	22	4340	28	103	815	0.94	1025	140	2.8	0.4	0.34	0.44	0.12	0.085	0.055	0.018	0.040
Dutton	225	-16	-18	31	24	3700	28	92	850	0.96	925	180	1.3	0.4	0.36	0.47	0.16	0.096	0.054	0.017	0.087
Earlton	245	-33	-36	29	22	5730	23	92	560	0.75	820	120	2.6	0.4	0.35	0.45	0.24	0.14	0.075	0.024	0.11
Edison	365	-34	-36	28	22	5740	25	108	510	0.65	680	120	2.4	0.3	0.24	0.31	0.095	0.057	0.026	0.008	0.036
Elliot Lake	380	-26	-28	29	21	4950	23	108	630	0.83	950	160	2.9	0.4	0.29	0.38	0.095	0.065	0.043	0.015	0.036
Elmvale	220	-24	-26	29	23	4200	28	97	720	0.87	950	140	2.6	0.4	0.28	0.36	0.14	0.10	0.064	0.021	0.040
Embro	310	-19	-21	30	23	3950	28	113	830	0.94	950	160	2.0	0.4	0.37	0.48	0.15	0.094	0.056	0.018	0.072
Englehart	205	-33	-36	29	22	5800	23	92	600	0.78	880	100	2.5	0.4	0.32	0.41	0.23	0.13	0.074	0.024	0.11
Espanola	220	-25	-27	29	21	4920	23	108	650	0.83	840	160	2.3	0.4	0.33	0.42	0.10	0.080	0.050	0.018	0.036
Exeter	265	-17	-19	30	23	3900	25	113	810	0.94	975	180	2.4	0.4	0.38	0.49	0.13	0.080	0.051	0.016	0.040
Fenelon Falls	260	-25	-27	30	23	4440	25	108	730	0.86	950	120	2.3	0.4	0.28	0.36	0.18	0.13	0.074	0.024	0.054
Fergus	400	-20	-22	29	23	4300	28	108	760	0.87	925	160	2.2	0.4	0.28	0.36	0.16	0.095	0.058	0.019	0.052
Forest	215	-16	-18	31	23	3740	25	103	810	0.95	875	160	2.0	0.4	0.37	0.48	0.12	0.076	0.049	0.015	0.038
Fort Erie	180	-15	-17	30	24	3650	23	108	860	0.98	1020	160	2.6	0.4	0.36	0.46	0.33	0.18	0.067	0.022	0.20
Fort Erie (Ridgeway)	190	-15	-17	30	24	3600	25	108	860	0.98	1000	160	2.5	0.4	0.36	0.46	0.33	0.18	0.066	0.022	0.19
Fort Frances	340	-33	-35	29	22	5440	25	108	570	0.71	725	120	2.3	0.3	0.24	0.31	0.095	0.057	0.026	0.008	0.036
Gananoque	80	-22	-24	28	23	4010	23	103	760	0.91	900	180	2.1	0.4	0.36	0.47	0.30	0.19	0.10	0.032	0.12
Geraldton	345	-36	-39	28	21	6450	20	86	550	0.77	725	100	2.9	0.4	0.23	0.30	0.095	0.057	0.026	0.008	0.036
Glencoe	215	-16	-18	31	24	3680	28	103	800	0.91	925	180	1.5	0.4	0.33	0.43	0.16	0.092	0.053	0.016	0.080
Goderich	185	-16	-18	29	23	4000	25	92	810	0.95	950	180	2.4	0.4	0.43	0.55	0.11	0.075	0.049	0.016	0.036
Gore Bay	205	-24	-26	28	22	4700	23	92	640	0.84	860	160	2.6	0.4	0.34	0.44	0.095	0.067	0.044	0.015	0.036
Graham	495	-35	-37	29	22	5940	23	97	570	0.75	750	140	2.6	0.3	0.23	0.30	0.095	0.057	0.026	0.008	0.036
Gravenhurst (Muskoka Airport)	255	-26	-28	29	23	4760	25	103	790	0.92	1050	120	2.7	0.4	0.28	0.36	0.17	0.12	0.070	0.024	0.052
Grimsby	85	-16	-18	30	23	3520	23	108	760	0.90	875	160	0.9	0.4	0.36	0.46	0.34	0.18	0.068	0.022	0.20

Table C-2 (Continued)

Province and Location	Elev., m	Design Temperature				Degree-Days Below 18°C	15 Min. Rain, mm	One Day Rain, 1/50, mm	Ann. Rain, mm	Moist. Index	Ann. Tot. Ppn., mm	Driving Rain Wind Pres- sures, Pa, 1/5	Snow Load, kPa, 1/50		Hourly Wind Pressures, kPa		Seismic Data ⁽¹⁾				
		January		July 2.5%									S _a	S _r	1/10	1/50	S _a (0.2)	S _a (0.5)	S _a (1.0)	S _a (2.0)	PGA
		2.5% °C	1% °C	Dry °C	Wet °C																
Guelph	340	-19	-21	29	23	4270	28	103	770	0.88	875	140	1.9	0.4	0.28	0.36	0.17	0.10	0.059	0.019	0.067
Guthrie	280	-24	-26	29	23	4300	28	103	700	0.83	950	120	2.5	0.4	0.28	0.36	0.15	0.11	0.066	0.022	0.043
Haileybury	210	-32	-35	30	22	5600	23	92	590	0.77	820	120	2.4	0.4	0.34	0.44	0.25	0.15	0.079	0.026	0.12
Haldimand (Caledonia)	190	-18	-20	30	23	3750	23	108	810	0.93	875	160	1.2	0.4	0.34	0.44	0.31	0.16	0.063	0.022	0.17
Haldimand (Hagersville)	215	-17	-19	30	23	3760	25	97	840	0.95	875	160	1.3	0.4	0.36	0.46	0.25	0.14	0.062	0.019	0.14
Haliburton	335	-27	-29	29	23	4840	25	92	780	0.90	980	100	2.9	0.4	0.27	0.35	0.22	0.15	0.081	0.027	0.074
Halton Hills (Georgetown)	255	-19	-21	30	23	4200	28	119	750	0.84	850	140	1.4	0.4	0.29	0.37	0.20	0.12	0.062	0.020	0.11
Hamilton	90	-17	-19	31	23	3460	23	108	810	0.90	875	160	0.9	0.4	0.36	0.46	0.32	0.17	0.064	0.022	0.18
Hanover	270	-19	-21	29	22	4300	28	103	790	0.92	1050	140	2.6	0.4	0.37	0.48	0.12	0.082	0.053	0.018	0.039
Hastings	200	-24	-26	30	23	4280	25	92	730	0.85	840	140	2.0	0.4	0.32	0.41	0.22	0.14	0.083	0.027	0.074
Hawkesbury	50	-25	-27	30	23	4610	23	103	800	0.91	925	160	2.3	0.4	0.32	0.41	0.57	0.29	0.13	0.044	0.30
Hearst	245	-35	-37	29	21	6450	20	86	520	0.74	825	80	2.8	0.3	0.23	0.30	0.095	0.057	0.033	0.012	0.036
Honey Harbour	180	-24	-26	29	23	4300	25	97	710	0.87	1050	160	2.7	0.4	0.30	0.39	0.15	0.11	0.065	0.022	0.044
Homepayne	360	-37	-40	28	21	6340	20	93	420	0.68	750	80	3.6	0.4	0.23	0.30	0.095	0.057	0.027	0.010	0.036
Huntsville	335	-26	-29	29	22	4850	25	103	800	0.93	1000	120	2.9	0.4	0.27	0.35	0.20	0.14	0.075	0.026	0.068
Ingersoll	280	-18	-20	30	23	3920	28	108	840	0.95	950	180	1.7	0.4	0.37	0.48	0.16	0.097	0.057	0.018	0.082
Iroquois Falls	275	-33	-36	29	21	6100	20	86	575	0.77	825	100	2.9	0.3	0.29	0.37	0.19	0.10	0.059	0.020	0.096
Jellicoe	330	-36	-39	28	21	6400	20	86	550	0.76	750	100	2.7	0.4	0.23	0.30	0.095	0.057	0.026	0.008	0.036
Kapusking	245	-34	-36	29	21	6250	20	86	550	0.76	825	100	2.8	0.3	0.24	0.31	0.11	0.068	0.042	0.014	0.045
Kemptville	90	-25	-27	30	23	4540	25	92	750	0.86	925	160	2.3	0.4	0.32	0.41	0.56	0.28	0.13	0.042	0.28
Kenora	370	-33	-35	28	22	5630	25	113	515	0.64	630	120	2.3	0.3	0.24	0.31	0.095	0.057	0.026	0.008	0.036
Killaloe	185	-28	-31	30	22	4960	23	86	680	0.83	825	120	2.7	0.4	0.27	0.35	0.44	0.23	0.11	0.036	0.21
Kincardine	190	-17	-19	28	22	3890	25	92	800	0.95	950	180	2.6	0.4	0.43	0.55	0.11	0.075	0.049	0.016	0.036
Kingston	80	-22	-24	28	23	4000	23	108	780	0.96	950	180	2.1	0.4	0.36	0.47	0.29	0.18	0.099	0.031	0.12
Kinmount	295	-26	-28	29	23	4600	25	108	750	0.88	950	120	2.7	0.4	0.27	0.35	0.20	0.14	0.077	0.026	0.062
Kirkland Lake	325	-33	-36	29	22	6000	23	92	600	0.78	875	100	2.9	0.3	0.30	0.39	0.22	0.12	0.069	0.022	0.10
Kitchener	335	-19	-21	29	23	4200	28	119	780	0.89	925	140	2.0	0.4	0.29	0.37	0.16	0.095	0.058	0.018	0.054

Table C-2 (Continued)

Province and Location	Elev., m	Design Temperature				Degree-Days Below 18°C	15 Min. Rain, mm	One Day Rain, 1/50, mm	Ann. Rain, mm	Moist. Index	Ann. Tot. Ppn., mm	Driving Rain Wind Pres- sures, Pa, 1/5	Snow Load, kPa, 1/50		Hourly Wind Pressures, kPa		Seismic Data ⁽¹⁾				
		January		July 2.5%									S _s	S _t	1/10	1/50	S _a (0.2)	S _a (0.5)	S _a (1.0)	S _a (2.0)	PGA
		2.5% °C	1% °C	Dry °C	Wet °C																
Lakefield	240	-24	-26	30	23	4330	25	92	720	0.85	850	140	2.2	0.4	0.29	0.38	0.20	0.14	0.079	0.026	0.062
Lansdowne House	240	-38	-40	28	21	7150	23	92	500	0.78	680	140	2.9	0.2	0.25	0.32	0.095	0.057	0.026	0.008	0.036
Leamington	190	-15	-17	31	24	3400	28	113	800	0.91	875	180	0.8	0.4	0.36	0.47	0.17	0.092	0.047	0.015	0.091
Lindsay	265	-24	-26	30	23	4320	25	103	720	0.84	850	140	2.3	0.4	0.29	0.38	0.18	0.12	0.074	0.024	0.053
Lion's Head	185	-19	-21	27	22	4300	25	103	700	0.89	950	180	2.7	0.4	0.37	0.48	0.11	0.082	0.053	0.018	0.036
Listowel	380	-19	-21	29	23	4300	28	119	800	0.93	1000	160	2.6	0.4	0.36	0.47	0.13	0.085	0.054	0.018	0.043
London	245	-18	-20	30	24	3900	28	103	825	0.94	975	180	1.9	0.4	0.36	0.47	0.15	0.093	0.055	0.017	0.076
Lucan	300	-17	-19	30	23	3900	25	113	810	0.94	1000	180	2.3	0.4	0.39	0.50	0.13	0.083	0.052	0.017	0.046
Maitland	85	-23	-25	29	23	4080	25	103	770	0.89	975	180	2.2	0.4	0.34	0.44	0.37	0.22	0.12	0.036	0.15
Markdale	425	-20	-22	29	22	4500	28	103	820	0.94	1050	160	3.4	0.4	0.32	0.41	0.12	0.088	0.056	0.019	0.040
Markham	175	-21	-23	31	24	4000	25	86	720	0.81	825	140	1.3	0.4	0.34	0.44	0.18	0.11	0.067	0.022	0.061
Martin	485	-35	-37	29	22	5900	25	103	560	0.75	750	120	2.6	0.3	0.23	0.30	0.095	0.057	0.026	0.008	0.036
Matheson	265	-33	-36	29	21	6080	20	86	580	0.77	825	100	2.8	0.3	0.30	0.39	0.20	0.11	0.063	0.020	0.098
Mattawa	165	-29	-31	30	22	5050	23	86	700	0.86	875	100	2.1	0.4	0.25	0.32	0.46	0.23	0.10	0.035	0.24
Midland	190	-24	-26	29	23	4200	25	97	740	0.88	1060	160	2.7	0.4	0.30	0.39	0.15	0.11	0.064	0.022	0.042
Milton	200	-18	-20	30	23	3920	25	125	750	0.85	850	160	1.3	0.4	0.33	0.43	0.26	0.14	0.063	0.020	0.14
Milverton	370	-19	-21	29	23	4200	28	108	800	0.93	1050	160	2.4	0.4	0.33	0.43	0.14	0.086	0.054	0.018	0.044
Minden	270	-27	-29	29	23	4640	25	97	780	0.90	1010	100	2.7	0.4	0.27	0.35	0.20	0.14	0.078	0.026	0.065
Mississauga	160	-18	-20	30	23	3880	25	113	720	0.85	800	160	1.1	0.4	0.34	0.44	0.26	0.15	0.065	0.020	0.14
Mississauga (Lester B. Pearson Int'l Airport)	170	-20	-22	31	24	3890	26	108	685	0.81	790	160	1.1	0.4	0.34	0.44	0.21	0.12	0.065	0.021	0.12
Mississauga (Port Credit)	75	-18	-20	29	23	3780	25	108	720	0.87	800	160	0.9	0.4	0.37	0.48	0.28	0.15	0.065	0.021	0.15
Mitchell	335	-18	-20	29	23	4100	28	113	810	0.94	1050	160	2.4	0.4	0.37	0.48	0.13	0.083	0.053	0.017	0.042
Moosonee	10	-36	-38	28	22	6800	18	81	500	0.84	700	160	2.2	0.3	0.27	0.35	0.13	0.068	0.040	0.014	0.057
Morrisburg	75	-23	-25	30	23	4370	25	103	800	0.91	950	180	2.3	0.4	0.32	0.41	0.60	0.30	0.14	0.044	0.31
Mount Forest	420	-21	-24	28	22	4700	28	103	740	0.87	940	140	2.7	0.4	0.32	0.41	0.13	0.087	0.055	0.018	0.043

Table C-2 (Continued)

Province and Location	Elev., m	Design Temperature				Degree-Days Below 18°C	15 Min. Rain, mm	One Day Rain, 1/50, mm	Ann. Rain, mm	Moist. Index	Ann. Tot. Ppn., mm	Driving Rain Wind Pres- sures, Pa, 1/5	Snow Load, kPa, 1/50		Hourly Wind Pressures, kPa		Seismic Data ⁽¹⁾					
		January		July 2.5%									S _e	S _i	1/10	1/50	S _a (0.2)	S _a (0.5)	S _a (1.0)	S _a (2.0)	PGA	
		2.5% °C	1% °C	Dry °C	Wet °C																	
Nakina	325	-36	-38	28	21	6500	20	86	540	0.76	750	100	2.8	0.4	0.23	0.30	0.095	0.057	0.026	0.008	0.036	
Nanticoke (Jarvis)	205	-17	-18	30	23	3700	28	108	840	0.95	900	160	1.4	0.4	0.37	0.48	0.22	0.12	0.062	0.019	0.12	
Nanticoke (Port Dover)	180	-15	-17	30	24	3600	25	108	860	0.98	950	140	1.2	0.4	0.37	0.48	0.19	0.11	0.060	0.018	0.093	
Napanee	90	-22	-24	29	23	4140	23	92	770	0.90	900	160	1.9	0.4	0.33	0.43	0.28	0.17	0.094	0.030	0.11	
New Liskeard	180	-32	-35	30	22	5570	23	92	570	0.75	810	100	2.3	0.4	0.33	0.43	0.24	0.14	0.078	0.025	0.12	
Newcastle	115	-20	-22	30	23	3990	23	86	760	0.90	830	160	1.5	0.4	0.37	0.48	0.20	0.13	0.074	0.024	0.081	
Newcastle (Bowmanville)	95	-20	-22	30	23	4000	23	86	760	0.90	830	160	1.4	0.4	0.37	0.48	0.20	0.13	0.073	0.023	0.078	
Newmarket	185	-22	-24	30	23	4260	28	108	700	0.81	800	140	2.0	0.4	0.29	0.38	0.16	0.11	0.065	0.021	0.051	
Niagara Falls	210	-16	-18	30	23	3600	23	96	810	0.94	950	160	2.0	0.4	0.33	0.43	0.34	0.19	0.070	0.023	0.20	
North Bay	210	-28	-30	28	22	5150	25	95	775	0.93	975	120	2.2	0.4	0.27	0.34	0.25	0.15	0.079	0.027	0.11	
Norwood	225	-24	-26	30	23	4320	25	92	720	0.84	850	120	2.1	0.4	0.32	0.41	0.21	0.14	0.083	0.027	0.070	
Oakville	90	-18	-20	30	23	3760	23	97	750	0.90	850	160	0.9	0.4	0.36	0.47	0.32	0.17	0.065	0.022	0.18	
Orangeville	430	-21	-23	29	23	4450	28	108	730	0.84	875	140	2.3	0.4	0.28	0.36	0.15	0.097	0.060	0.020	0.051	
Orillia	230	-25	-27	29	23	4260	25	103	740	0.88	1000	120	2.4	0.4	0.28	0.36	0.16	0.11	0.068	0.023	0.046	
Oshawa	110	-19	-21	30	23	3860	23	86	760	0.90	875	160	1.4	0.4	0.37	0.48	0.19	0.12	0.072	0.023	0.074	
Ottawa (Metropolitan)																						
Ottawa (City Hall)	70	-25	-27	30	23	4440	23	86	750	0.84	900	160	2.4	0.4	0.32	0.41	0.64	0.31	0.14	0.046	0.32	
Ottawa (Barrhaven)	98	-25	-27	30	23	4500	25	92	750	0.84	900	160	2.4	0.4	0.32	0.41	0.63	0.30	0.14	0.045	0.32	
Ottawa (Kanata)	98	-25	-27	30	23	4520	25	92	730	0.84	900	160	2.5	0.4	0.32	0.41	0.62	0.30	0.13	0.045	0.32	
Ottawa (M-C Int'l Airport)	125	-25	-27	30	23	4500	24	89	750	0.84	900	160	2.4	0.4	0.32	0.41	0.63	0.31	0.14	0.046	0.32	
Ottawa (Orleans)	70	-26	-28	30	23	4500	23	91	750	0.84	900	160	2.4	0.4	0.32	0.41	0.63	0.31	0.14	0.046	0.32	
Owen Sound	215	-19	-21	29	22	4030	28	113	760	0.90	1075	160	2.8	0.4	0.37	0.48	0.12	0.085	0.055	0.018	0.036	
Pagwa River	185	-35	-37	28	21	6500	20	86	540	0.76	825	80	2.4	0.4	0.23	0.30	0.095	0.057	0.026	0.009	0.036	
Paris	245	-18	-20	30	23	4000	23	96	790	0.90	925	160	1.4	0.4	0.33	0.42	0.18	0.10	0.060	0.019	0.084	
Parkhill	205	-16	-18	31	23	3800	25	103	800	0.93	925	180	2.1	0.4	0.39	0.50	0.12	0.079	0.051	0.016	0.041	
Parry Sound	215	-24	-26	28	22	4640	23	97	820	0.95	1050	160	2.8	0.4	0.30	0.39	0.16	0.11	0.065	0.022	0.050	

Table C-2 (Continued)

Province and Location	Elev., m	Design Temperature				Degree-Days Below 18°C	15 Min. Rain, mm	One Day Rain, 1/50, mm	Ann. Rain, mm	Moist. Index	Ann. Tot. Ppn., mm	Driving Rain Wind Pres- sures, Pa, 1/5	Snow Load, kPa, 1/50		Hourly Wind Pressures, kPa		Seismic Data ⁽¹⁾				
		January		July 2.5%									S _s	S _t	1/10	1/50	S _a (0.2)	S _a (0.5)	S _a (1.0)	S _a (2.0)	PGA
		2.5% °C	1% °C	Dry °C	Wet °C																
Pelham (Fonthill)	230	-15	-17	30	23	3690	23	96	820	0.94	950	160	2.3	0.4	0.33	0.42	0.34	0.19	0.068	0.022	0.20
Pembroke	125	-28	-31	30	23	4980	23	105	640	0.80	825	100	2.5	0.4	0.27	0.35	0.63	0.30	0.13	0.044	0.32
Penetanguishene	220	-24	-26	29	23	4200	25	97	720	0.87	1050	160	2.8	0.4	0.30	0.39	0.14	0.11	0.064	0.022	0.041
Perth	130	-25	-27	30	23	4540	25	92	730	0.84	900	140	2.3	0.4	0.32	0.41	0.36	0.21	0.11	0.036	0.14
Petawawa	135	-29	-31	30	23	4980	23	92	640	0.80	825	100	2.6	0.4	0.27	0.35	0.63	0.30	0.13	0.043	0.32
Peterborough	200	-23	-25	30	23	4400	25	92	710	0.83	840	140	2.0	0.4	0.32	0.41	0.19	0.13	0.078	0.025	0.062
Petrolia	195	-16	-18	31	24	3640	25	108	810	0.89	920	180	1.3	0.4	0.36	0.47	0.13	0.079	0.049	0.015	0.048
Pickering (Dunbarton)	85	-19	-21	30	23	3800	23	92	730	0.88	825	140	1.0	0.4	0.37	0.48	0.18	0.12	0.069	0.022	0.078
Picton	95	-21	-23	29	23	3980	23	92	770	0.91	940	160	2.0	0.4	0.38	0.49	0.26	0.16	0.088	0.028	0.11
Plattsville	300	-19	-21	29	23	4150	28	103	820	0.93	950	140	1.9	0.4	0.33	0.42	0.15	0.096	0.058	0.018	0.069
Point Alexander	150	-29	-32	30	22	4960	23	92	650	0.82	850	100	2.5	0.4	0.27	0.35	0.63	0.30	0.13	0.043	0.32
Port Burwell	195	-15	-17	30	24	3800	25	92	930	1.05	1000	180	1.2	0.4	0.36	0.47	0.17	0.099	0.058	0.018	0.092
Port Colborne	180	-15	-17	30	24	3600	23	108	850	0.97	1000	160	2.3	0.4	0.36	0.46	0.33	0.18	0.066	0.022	0.19
Port Elgin	205	-17	-19	28	22	4100	25	92	790	0.94	850	180	2.8	0.4	0.43	0.55	0.11	0.078	0.051	0.017	0.036
Port Hope	100	-21	-23	29	23	3970	23	94	760	0.90	825	180	1.2	0.4	0.37	0.48	0.21	0.13	0.077	0.024	0.094
Port Perry	270	-22	-24	30	23	4260	25	97	720	0.84	850	140	2.4	0.4	0.34	0.44	0.17	0.12	0.070	0.023	0.053
Port Stanley	180	-15	-17	31	24	3850	25	92	940	1.05	975	180	1.2	0.4	0.36	0.47	0.17	0.099	0.055	0.017	0.090
Prescott	90	-23	-25	29	23	4120	25	103	770	0.88	975	180	2.2	0.4	0.34	0.44	0.42	0.24	0.12	0.038	0.018
Princeton	280	-18	-20	30	23	4000	25	97	810	0.92	925	160	1.5	0.4	0.33	0.42	0.16	0.10	0.059	0.018	0.082
Raith	475	-34	-37	28	22	5900	23	97	570	0.75	750	120	2.7	0.4	0.23	0.30	0.095	0.057	0.026	0.008	0.036
Rayside-Balfour (Chelmsford)	270	-28	-30	29	21	5200	25	92	650	0.80	850	180	2.5	0.4	0.35	0.45	0.14	0.097	0.057	0.020	0.045
Red Lake	360	-35	-37	28	21	6220	20	92	470	0.69	630	120	2.4	0.3	0.23	0.30	0.095	0.057	0.026	0.008	0.036
Renfrew	115	-27	-30	30	23	4900	23	97	620	0.75	810	140	2.5	0.4	0.27	0.35	0.58	0.29	0.13	0.043	0.30
Richmond Hill	230	-21	-23	31	24	4000	25	97	740	0.83	850	140	1.5	0.4	0.34	0.44	0.18	0.11	0.065	0.021	0.063
Rockland	50	-26	-28	30	23	4600	23	92	780	0.89	950	160	2.4	0.4	0.31	0.40	0.60	0.30	0.14	0.045	0.31
Sarnia	190	-16	-18	31	24	3750	25	100	750	0.87	825	180	1.1	0.4	0.36	0.47	0.12	0.073	0.048	0.015	0.037
Sault Ste. Marie	190	-25	-28	29	22	4960	23	97	660	0.89	950	200	3.1	0.4	0.34	0.44	0.095	0.057	0.032	0.12	0.036

Table C-2 (Continued)

Province and Location	Elev., m	Design Temperature				Degree-Days Below 18°C	15 Min. Rain, mm	One Day Rain, 1/50, mm	Ann. Rain, mm	Moist. Index	Ann. Tot. Ppn., mm	Driving Rain Wind Pressures, Pa, 1/5	Snow Load, kPa, 1/50		Hourly Wind Pressures, kPa		Seismic Data ⁽¹⁾				
		January		July 2.5%									S _a	S _r	1/10	1/50	S _a (0.2)	S _a (0.5)	S _a (1.0)	S _a (2.0)	PGA
		2.5% °C	1% °C	Dry °C	Wet °C																
Schreiber	310	-34	-36	27	21	5960	20	103	600	0.82	850	160	3.3	0.4	0.30	0.39	0.095	0.057	0.026	0.008	0.036
Seaforth	310	-17	-19	30	23	4100	25	108	810	0.94	1025	160	2.5	0.4	0.37	0.48	0.12	0.080	0.051	0.017	0.040
Shelburne	495	-22	-24	29	23	4700	28	108	740	0.88	900	150	3.1	0.4	0.31	0.40	0.14	0.094	0.059	0.020	0.046
Simcoe	210	-17	-19	30	24	3700	28	113	860	0.97	950	160	1.3	0.4	0.35	0.45	0.18	0.10	0.060	0.018	0.093
Sioux Lookout	375	-34	-36	28	22	5950	25	97	520	0.69	710	100	2.4	0.3	0.23	0.30	0.095	0.057	0.026	0.008	0.036
Smiths Falls	130	-25	-27	30	23	4540	25	92	730	0.84	850	140	2.3	0.4	0.32	0.41	0.39	0.22	0.12	0.037	0.17
Smithville	185	-16	-18	30	23	3650	23	108	800	0.92	900	160	1.5	0.4	0.33	0.42	0.34	0.18	0.068	0.022	0.20
Smooth Rock Falls	235	-34	-36	29	21	6250	20	92	560	0.77	850	80	2.7	0.3	0.25	0.32	0.16	0.089	0.049	0.017	0.085
South River	355	-27	-29	29	22	5090	25	103	830	0.96	975	120	2.8	0.4	0.27	0.35	0.23	0.14	0.077	0.027	0.086
Southampton	180	-17	-19	28	22	4100	25	92	800	0.95	830	180	2.7	0.4	0.41	0.53	0.11	0.078	0.051	0.017	0.036
St. Catharines	105	-16	-18	30	23	3540	23	92	770	0.90	850	160	1.0	0.4	0.36	0.46	0.34	0.19	0.069	0.023	0.20
St. Mary's	310	-18	-20	30	23	4000	28	108	820	0.95	1025	160	2.2	0.4	0.36	0.47	0.14	0.086	0.054	0.017	0.049
St. Thomas	225	-16	-18	31	24	3780	25	103	900	0.99	975	180	1.4	0.4	0.36	0.47	0.16	0.096	0.056	0.017	0.088
Stirling	120	-23	-25	30	23	4220	25	97	740	0.86	850	120	1.7	0.4	0.31	0.40	0.25	0.16	0.088	0.028	0.096
Stratford	360	-18	-20	29	23	4050	28	113	820	0.95	1050	160	2.3	0.4	0.35	0.45	0.14	0.087	0.055	0.018	0.045
Strathroy	225	-17	-19	31	24	3780	25	103	770	0.88	950	180	1.9	0.4	0.36	0.47	0.14	0.086	0.052	0.016	0.064
Sturgeon Falls	205	-28	-30	29	21	5200	25	95	700	0.86	910	140	2.2	0.4	0.27	0.35	0.22	0.13	0.072	0.025	0.086
Sudbury	275	-28	-30	29	21	5180	25	97	650	0.79	875	200	2.5	0.4	0.36	0.46	0.15	0.10	0.059	0.020	0.051
Sundridge	340	-27	-29	29	22	5080	25	97	840	0.97	975	120	2.8	0.4	0.27	0.35	0.23	0.14	0.076	0.026	0.082
Tavistock	340	-19	-21	29	23	4100	28	113	820	0.95	1010	160	2.1	0.4	0.35	0.45	0.14	0.090	0.056	0.018	0.053
Temagami	300	-30	-33	30	22	5420	23	92	650	0.82	875	120	2.6	0.4	0.29	0.37	0.25	0.15	0.077	0.026	0.12
Thamesford	280	-19	-21	30	23	3950	28	108	820	0.93	975	160	1.9	0.4	0.37	0.48	0.16	0.095	0.056	0.018	0.076
Theford	205	-16	-18	31	23	3710	25	103	810	0.95	900	180	2.1	0.4	0.39	0.50	0.12	0.077	0.050	0.016	0.038
Thunder Bay	210	-31	-33	29	21	5650	23	108	560	0.76	710	160	2.9	0.4	0.30	0.39	0.095	0.057	0.026	0.008	0.036
Tillsonburg	215	-17	-19	30	24	3840	25	103	880	0.98	980	160	1.3	0.4	0.34	0.44	0.17	0.10	0.058	0.018	0.091
Timmins	300	-34	-36	29	21	5940	20	108	560	0.75	875	100	3.1	0.3	0.27	0.35	0.14	0.090	0.054	0.018	0.056
Timmins (Porcupine)	295	-34	-36	29	21	6000	20	103	560	0.75	875	100	2.9	0.3	0.29	0.37	0.16	0.094	0.056	0.018	0.068

Table C-2 (Continued)

Province and Location	Elev., m	Design Temperature				Degree-Days Below 18°C	15 Min. Rain, mm	One Day Rain, 1/50, mm	Ann. Rain, mm	Moist. Index	Ann. Tot. Ppn., mm	Driving Rain Wind Pres- sures, Pa, 1/5	Snow Load, kPa, 1/50		Hourly Wind Pressures, kPa		Seismic Data ⁽¹⁾				
		January		July 2.5%									S _s	S _t	1/10	1/50	S _a (0.2)	S _a (0.5)	S _a (1.0)	S _a (2.0)	PGA
		2.5% °C	1% °C	Dry °C	Wet °C																
Toronto Metropolitan Region																					
Etobicoke	160	-20	-22	31	24	3800	26	108	720	0.80	800	160	1.1	0.4	0.34	0.44	0.21	0.12	0.065	0.021	0.11
North York	175	-20	-22	31	24	3760	25	108	730	0.82	850	150	1.2	0.4	0.34	0.44	0.19	0.11	0.066	0.021	0.078
Scarborough	180	-20	-22	31	24	3800	25	92	730	0.87	825	160	1.2	0.4	0.36	0.47	0.19	0.11	0.068	0.022	0.076
Toronto (City Hall)	90	-18	-20	31	23	3520	25	97	720	0.86	820	160	0.9	0.4	0.34	0.44	0.22	0.13	0.067	0.021	0.12
Trenton	80	-22	-24	29	23	4110	23	97	760	0.89	850	160	1.6	0.4	0.36	0.47	0.24	0.15	0.085	0.027	0.099
Trout Creek	330	-27	-29	29	22	5100	25	103	780	0.92	975	120	2.7	0.4	0.27	0.35	0.24	0.15	0.078	0.027	0.095
Uxbridge	275	-22	-24	30	23	4240	25	103	700	0.82	850	140	2.4	0.4	0.33	0.42	0.16	0.11	0.069	0.022	0.049
Vaughan (Woodbridge)	165	-20	-22	31	24	4100	26	113	700	0.80	800	140	1.1	0.4	0.34	0.44	0.19	0.11	0.064	0.021	0.081
Vittoria	215	-15	-17	30	24	3680	25	113	880	0.99	950	160	1.3	0.4	0.36	0.47	0.18	0.10	0.060	0.018	0.093
Walkerton	275	-18	-20	30	22	4300	28	103	790	0.92	1025	160	2.7	0.4	0.39	0.50	0.12	0.081	0.052	0.018	0.038
Wallaceburg	180	-16	-18	31	24	3600	28	97	760	0.87	825	180	0.9	0.4	0.35	0.45	0.15	0.085	0.047	0.015	0.071
Waterloo	330	-19	-21	29	23	4200	28	119	780	0.89	925	160	2.0	0.4	0.29	0.37	0.15	0.094	0.058	0.018	0.052
Watford	240	-17	-19	31	24	3740	25	108	790	0.90	950	160	1.9	0.4	0.36	0.47	0.13	0.081	0.050	0.016	0.050
Wawa	290	-34	-36	26	21	5840	20	93	725	0.93	950	160	4.1	0.4	0.30	0.39	0.095	0.057	0.028	0.010	0.036
Welland	180	-15	-17	30	23	3670	23	103	840	0.96	975	160	2.2	0.4	0.33	0.43	0.34	0.18	0.068	0.022	0.20
West Lorne	215	-16	-18	31	24	3700	28	103	840	0.95	900	180	1.3	0.4	0.36	0.47	0.16	0.095	0.054	0.016	0.088
Whitby	85	-20	-22	30	23	3820	23	86	760	0.90	850	160	1.2	0.4	0.37	0.48	0.19	0.12	0.071	0.022	0.075
Whitby (Brooklin)	160	-20	-22	30	23	4010	23	86	770	0.91	850	140	1.9	0.4	0.35	0.45	0.18	0.12	0.070	0.023	0.066
White River	375	-39	-42	28	21	6150	20	92	575	0.80	825	100	4.5	0.4	0.23	0.30	0.095	0.057	0.026	0.009	0.036
Warton	185	-19	-21	29	22	4300	25	103	740	0.91	1000	180	2.7	0.4	0.37	0.48	0.11	0.083	0.053	0.018	0.036
Windsor	185	-16	-18	32	24	3400	28	103	800	0.85	900	180	0.8	0.4	0.36	0.47	0.15	0.085	0.045	0.014	0.073
Wingham	310	-18	-20	30	23	4220	28	108	780	0.91	1050	160	2.6	0.4	0.39	0.50	0.12	0.079	0.051	0.017	0.039
Woodstock	300	-19	-21	30	23	3910	28	113	830	0.94	930	160	1.9	0.4	0.34	0.44	0.16	0.098	0.058	0.018	0.079
Wyoming	215	-16	-18	31	24	3700	25	103	815	0.92	900	180	1.6	0.4	0.36	0.47	0.13	0.077	0.049	0.015	0.043
Quebec																					

Table C-2 (Continued)

Province and Location	Elev., m	Design Temperature				Degree-Days Below 18°C	15 Min. Rain, mm	One Day Rain, 1/50, mm	Ann. Rain, mm	Moist. Index	Ann. Tot. Ppn., mm	Driving Rain Wind Pres- sures, Pa, 1/5	Snow Load, kPa, 1/50		Hourly Wind Pressures, kPa		Seismic Data ⁽¹⁾				
		January		July 2.5%									S _s	S _t	1/10	1/50	S _a (0.2)	S _a (0.5)	S _a (1.0)	S _a (2.0)	PGA
		2.5% °C	1% °C	Dry °C	Wet °C																
Acton-Vale	95	-24	-27	30	23	4620	21	107	860	0.97	1050	180	2.3	0.4	0.27	0.35	0.40	0.24	0.12	0.040	0.18
Alma	110	-31	-33	28	22	5800	20	91	700	0.86	950	160	3.3	0.4	0.27	0.35	0.56	0.28	0.14	0.047	0.31
Amos	295	-34	-36	28	21	6160	20	91	670	0.85	920	100	3.2	0.3	0.25	0.32	0.17	0.12	0.068	0.023	0.055
Asbestos	245	-26	-28	29	22	4800	23	96	870	0.98	1050	160	2.8	0.6	0.27	0.35	0.35	0.22	0.12	0.039	0.13
Aylmer	90	-25	-28	30	23	4520	23	91	730	0.84	900	160	2.5	0.4	0.32	0.41	0.63	0.31	0.14	0.046	0.32
Baie-Comeau	60	-27	-29	25	19	6020	16	91	680	0.96	1000	220	4.3	0.4	0.39	0.50	0.60	0.36	0.16	0.052	0.39
Baie-Saint-Paul	20	-27	-29	28	21	5280	18	102	730	0.89	1000	180	3.2	0.6	0.37	0.48	2.1	1.1	0.49	0.14	1.2
Beauport	45	-26	-29	28	22	5100	20	107	980	1.09	1200	200	3.4	0.6	0.33	0.42	0.56	0.33	0.16	0.053	0.30
Bedford	55	-24	-26	29	23	4420	23	91	880	0.99	1260	160	2.1	0.4	0.32	0.41	0.56	0.28	0.12	0.043	0.28
Beloil	25	-24	-26	30	23	4500	23	91	840	0.95	1025	180	2.4	0.4	0.29	0.37	0.62	0.31	0.13	0.047	0.32
Brome	210	-25	-27	29	23	4730	23	96	990	1.09	1240	160	2.5	0.4	0.29	0.37	0.38	0.23	0.12	0.039	0.15
Brossard	15	-24	-26	30	23	4420	23	91	800	0.90	1025	180	2.4	0.4	0.33	0.42	0.64	0.31	0.14	0.047	0.33
Buckingham	130	-26	-28	30	23	4880	23	91	810	0.94	990	160	2.6	0.4	0.31	0.40	0.63	0.31	0.14	0.046	0.32
Campbell's Bay	115	-28	-30	30	23	4900	23	96	700	0.83	850	140	2.6	0.4	0.25	0.32	0.63	0.30	0.13	0.045	0.32
Chambly	20	-24	-26	30	23	4450	23	91	850	0.96	1000	160	2.3	0.4	0.31	0.40	0.63	0.31	0.13	0.047	0.32
Coaticook	295	-25	-27	28	22	4750	23	96	860	1.00	1060	160	2.3	0.6	0.27	0.35	0.41	0.25	0.11	0.038	0.20
Contrecoeur	10	-25	-27	30	23	4500	20	102	810	0.94	1000	180	2.8	0.4	0.33	0.43	0.62	0.31	0.13	0.047	0.32
Cowansville	120	-25	-27	29	23	4540	23	91	940	1.04	1150	160	2.3	0.4	0.32	0.41	0.42	0.24	0.12	0.040	0.20
Deux-Montagnes	25	-25	-27	29	23	4440	23	96	820	0.92	1025	160	2.4	0.4	0.29	0.37	0.64	0.31	0.14	0.048	0.32
Dolbeau	120	-32	-34	28	22	6250	22	91	670	0.85	900	140	3.5	0.3	0.27	0.35	0.32	0.21	0.11	0.039	0.13
Drummondville	85	-26	-28	30	23	4700	22	107	870	0.98	1075	180	2.5	0.4	0.27	0.35	0.46	0.25	0.12	0.041	0.22
Farnham	60	-24	-26	29	23	4500	23	96	910	1.01	1050	180	2.2	0.4	0.29	0.37	0.54	0.28	0.13	0.043	0.28
Fort-Coulonge	110	-28	-30	30	23	4950	23	96	720	0.86	900	100	2.5	0.4	0.25	0.32	0.63	0.30	0.13	0.045	0.32
Gagnon	545	-34	-36	24	19	7600	17	80	580	0.89	925	140	4.6	0.4	0.30	0.39	0.095	0.10	0.063	0.023	0.036
Gaspé	55	-25	-26	26	20	5500	19	118	760	0.96	1100	300	4.3	0.6	0.37	0.48	0.19	0.17	0.080	0.031	0.061
Gatineau	95	-25	-28	30	23	4600	23	91	790	0.92	950	160	2.5	0.4	0.32	0.41	0.63	0.31	0.14	0.046	0.32
Gracefield	175	-28	-31	30	23	5080	23	96	700	0.85	950	140	2.6	0.4	0.25	0.32	0.57	0.28	0.13	0.042	0.28
Granby	120	-25	-27	29	23	4500	23	102	940	1.04	1175	160	2.3	0.4	0.27	0.35	0.42	0.24	0.12	0.040	0.19

Table C-2 (Continued)

Province and Location	Elev., m	Design Temperature				Degree-Days Below 18°C	15 Min. Rain, mm	One Day Rain, 1/50, mm	Ann. Rain, mm	Moist. Index	Ann. Tot. Ppn., mm	Driving Rain Wind Pres- sures, Pa, 1/5	Snow Load, kPa, 1/50		Hourly Wind Pressures, kPa		Seismic Data ⁽¹⁾				
		January		July 2.5%									S _s	S _t	1/10	1/50	S _a (0.2)	S _a (0.5)	S _a (1.0)	S _a (2.0)	PGA
		2.5% °C	1% °C	Dry °C	Wet °C																
Hamington-Harbour	30	-27	-29	19	16	6150	15	96	900	1.18	1150	300	4.9	0.6	0.56	0.72	0.11	0.079	0.051	0.018	0.036
Havre-St-Pierre	5	-27	-29	22	18	6100	15	96	780	1.05	1125	300	4.1	0.6	0.48	0.63	0.28	0.17	0.077	0.029	0.15
Hemmingford	75	-24	-26	30	23	4380	23	91	770	0.89	1025	160	2.4	0.4	0.31	0.40	0.64	0.31	0.14	0.047	0.33
Hull	65	-25	-28	30	23	4550	23	91	730	0.84	900	160	2.4	0.4	0.32	0.41	0.64	0.31	0.14	0.046	0.32
Iberville	35	-24	-26	29	23	4450	23	91	880	0.99	1010	160	2.2	0.4	0.32	0.41	0.62	0.30	0.13	0.046	0.32
Inukjuak	5	-36	-38	21	15	9150	9	54	270	0.88	420	240	4.4	0.2	0.47	0.60	0.095	0.057	0.028	0.009	0.036
Joliette	45	-26	-28	29	23	4720	21	102	790	0.93	1000	160	3.1	0.4	0.28	0.36	0.59	0.30	0.13	0.045	0.31
Kuujuuaq	25	-37	-39	24	17	8550	9	54	280	0.80	525	260	4.8	0.2	0.47	0.60	0.095	0.063	0.043	0.015	0.036
Kuujuarapik	20	-36	-38	25	17	7990	12	80	410	0.85	610	180	4.5	0.3	0.43	0.55	0.095	0.057	0.026	0.008	0.036
La Pocatière	55	-24	-26	28	22	5160	18	102	675	0.85	965	180	3.2	0.6	0.39	0.50	2.0	1.0	0.46	0.14	1.1
La-Malbaie	25	-26	-28	28	21	5400	18	102	640	0.82	900	180	3.1	0.6	0.37	0.48	2.3	1.1	0.53	0.16	1.2
La-Tuque	165	-30	-32	29	22	5500	23	96	720	0.87	930	160	3.4	0.4	0.27	0.35	0.32	0.22	0.12	0.041	0.11
Lac-Mégantic	420	-27	-29	27	22	5180	23	91	790	0.94	1025	160	3.2	0.6	0.27	0.35	0.39	0.24	0.12	0.040	0.19
Lachute	65	-26	-28	29	23	4640	23	96	910	1.04	1075	160	2.4	0.4	0.31	0.40	0.57	0.29	0.14	0.044	0.30
Lennoxville	155	-28	-30	29	22	4700	23	96	850	0.98	1100	160	2.0	0.6	0.25	0.32	0.36	0.22	0.11	0.038	0.14
Léry	30	-24	-26	29	23	4420	23	91	800	0.91	950	180	2.3	0.4	0.33	0.42	0.65	0.31	0.14	0.048	0.33
Loretteville	100	-26	-29	28	22	5200	20	102	980	1.09	1225	200	3.7	0.6	0.32	0.41	0.58	0.32	0.15	0.052	0.31
Louiseville	15	-25	-28	29	23	4900	20	102	800	0.93	1025	160	2.9	0.4	0.33	0.43	0.59	0.30	0.13	0.045	0.31
Magog	215	-26	-28	29	23	4730	23	96	860	0.99	1125	160	2.3	0.4	0.27	0.35	0.36	0.22	0.11	0.038	0.14
Malartic	325	-33	-36	29	21	6200	20	86	640	0.82	900	100	3.3	0.3	0.25	0.32	0.21	0.14	0.076	0.026	0.073
Maniwaki	180	-30	-32	29	22	5280	23	96	700	0.86	900	100	2.4	0.4	0.24	0.31	0.61	0.29	0.13	0.042	0.33
Masson	50	-26	-28	30	23	4610	23	91	790	0.92	975	160	2.4	0.4	0.31	0.40	0.62	0.31	0.14	0.046	0.31
Matane	5	-24	-26	24	20	5510	18	91	640	0.88	1050	220	3.7	0.4	0.47	0.60	0.60	0.37	0.16	0.052	0.39
Mont-Joli	90	-24	-26	26	21	5370	18	91	610	0.84	920	220	4.0	0.4	0.40	0.52	0.57	0.35	0.17	0.053	0.30
Mont-Laurier	225	-29	-32	29	22	5320	24	102	790	0.93	1000	160	2.6	0.4	0.23	0.30	0.61	0.29	0.14	0.042	0.33
Montmagny	10	-25	-28	28	22	5090	20	102	880	1.01	1090	180	2.9	0.6	0.36	0.47	0.73	0.41	0.19	0.062	0.34
Montréal Region Beaconsfield	25	-24	-26	30	23	4440	23	91	780	0.89	950	180	2.3	0.4	0.33	0.42	0.64	0.32	0.14	0.048	0.33

Table C-2 (Continued)

Province and Location	Elev., m	Design Temperature				Degree-Days Below 18°C	15 Min. Rain, mm	One Day Rain, 1/50, mm	Ann. Rain, mm	Moist. Index	Ann. Tot. Ppn., mm	Driving Rain Wind Pres- sures, Pa, 1/5	Snow Load, kPa, 1/50		Hourly Wind Pressures, kPa		Seismic Data ⁽¹⁾				
		January		July 2.5%									S _s	S _r	1/10	1/50	S _a (0.2)	S _a (0.5)	S _a (1.0)	S _a (2.0)	PGA
		2.5% °C	1% °C	Dry °C	Wet °C																
Dorval	25	-24	-26	30	23	4400	23	91	760	0.85	940	180	2.4	0.4	0.33	0.42	0.64	0.31	0.14	0.048	0.33
Laval	35	-24	-26	29	23	4500	23	96	830	0.93	1025	160	2.6	0.4	0.33	0.42	0.64	0.31	0.14	0.048	0.32
Montréal (City Hall)	20	-23	-26	30	23	4200	23	96	830	0.93	1025	180	2.6	0.4	0.33	0.42	0.64	0.31	0.14	0.048	0.33
Montréal-Est	25	-23	-26	30	23	4470	23	96	830	0.93	1025	180	2.7	0.4	0.33	0.42	0.64	0.31	0.14	0.047	0.32
Montréal-Nord	20	-24	-26	30	23	4470	23	96	830	0.93	1025	160	2.6	0.4	0.33	0.42	0.64	0.31	0.14	0.048	0.33
Outremont	105	-23	-26	30	23	4300	23	96	820	0.91	1025	180	2.8	0.4	0.33	0.42	0.64	0.31	0.14	0.048	0.33
Pierrefonds	25	-24	-26	30	23	4430	23	96	800	0.90	960	180	2.4	0.4	0.33	0.42	0.64	0.31	0.14	0.048	0.33
St-Lambert	15	-23	-26	30	23	4400	23	96	810	0.91	1050	160	2.5	0.4	0.33	0.42	0.64	0.31	0.14	0.047	0.33
St-Laurent	45	-23	-26	30	23	4270	23	96	790	0.89	950	160	2.5	0.4	0.33	0.42	0.64	0.31	0.14	0.048	0.33
Ste-Anne-de-Bellevue	35	-24	-26	29	23	4460	23	96	780	0.89	960	180	2.3	0.4	0.33	0.42	0.64	0.32	0.14	0.048	0.33
Verdun	20	-23	-26	30	23	4200	23	91	780	0.88	1025	180	2.5	0.4	0.33	0.42	0.64	0.31	0.14	0.048	0.33
Nicolet (Gentilly)	15	-25	-28	29	23	4900	20	107	860	0.98	1025	160	2.8	0.4	0.33	0.42	0.59	0.29	0.13	0.045	0.31
Nitchequon	545	-39	-41	23	19	8100	15	70	500	0.89	825	140	3.5	0.3	0.29	0.37	0.095	0.058	0.040	0.015	0.036
Noranda	305	-33	-36	29	21	6050	20	91	650	0.82	875	100	3.2	0.3	0.27	0.35	0.19	0.12	0.069	0.023	0.066
Percé	5	-21	-24	25	19	5400	16	107	1000	1.18	1300	300	3.8	0.6	0.56	0.72	0.18	0.15	0.078	0.030	0.052
Pincourt	25	-24	-26	29	23	4480	23	96	780	0.88	950	180	2.3	0.4	0.33	0.42	0.65	0.32	0.14	0.048	0.33
Plessisville	145	-26	-28	29	23	5100	21	107	890	1.00	1150	180	2.8	0.6	0.27	0.35	0.40	0.25	0.13	0.043	0.19
Port-Cartier	20	-28	-30	25	19	6060	15	106	730	0.99	1125	300	4.1	0.4	0.42	0.54	0.42	0.26	0.11	0.041	0.21
Puvrmituq	5	-36	-38	23	16	9200	7	54	210	0.87	375	240	4.5	0.2	0.47	0.60	0.19	0.091	0.049	0.013	0.099
Québec City Region																					
Ancienne-Lorette	35	-25	-28	28	23	5130	20	102	940	1.06	1200	200	3.4	0.6	0.32	0.41	0.57	0.31	0.15	0.052	0.30
Lévis	50	-25	-28	28	22	5050	20	107	920	1.04	1200	160	3.3	0.6	0.32	0.41	0.55	0.32	0.15	0.053	0.29
Québec	120	-25	-28	28	22	5080	20	107	925	1.04	1210	200	3.6	0.6	0.32	0.41	0.55	0.32	0.15	0.052	0.30
Sillery	10	-25	-28	28	23	5070	20	107	930	1.05	1200	200	3.1	0.6	0.32	0.41	0.55	0.32	0.15	0.052	0.29
Ste-Foy	115	-25	-28	28	23	5100	20	107	940	1.06	1200	180	3.7	0.6	0.32	0.41	0.55	0.32	0.15	0.052	0.30
Richmond	150	-25	-27	29	22	4700	23	96	870	0.98	1060	160	2.2	0.6	0.25	0.32	0.35	0.22	0.12	0.039	0.13
Rimouski	30	-25	-27	26	20	5300	18	91	640	0.84	890	200	3.8	0.4	0.40	0.52	0.58	0.32	0.16	0.053	0.31

Table C-2 (Continued)

Province and Location	Elev., m	Design Temperature				Degree-Days Below 18°C	15 Min. Rain, mm	One Day Rain, 1/50, mm	Ann. Rain, mm	Moist. Index	Ann. Tot. Ppn., mm	Driving Rain Wind Pres- sures, Pa, 1/5	Snow Load, kPa, 1/50		Hourly Wind Pressures, kPa		Seismic Data ⁽¹⁾				
		January		July 2.5%									S _e	S _r	1/10	1/50	S _a (0.2)	S _a (0.5)	S _a (1.0)	S _a (2.0)	PGA
		2.5% °C	1% °C	Dry °C	Wet °C																
Rivière-du-Loup	55	-25	-27	26	21	5380	18	91	660	0.84	900	180	3.3	0.6	0.39	0.50	1.0	0.56	0.24	0.080	0.49
Roberval	100	-31	-33	28	21	5750	22	91	590	0.77	910	140	3.5	0.3	0.27	0.35	0.41	0.24	0.12	0.042	0.22
Rock-Island	160	-25	-27	29	23	4850	23	91	900	1.03	1125	160	2.0	0.4	0.27	0.35	0.42	0.25	0.11	0.039	0.19
Rosemère	25	-24	-26	29	23	4550	23	96	840	0.97	1050	160	2.6	0.4	0.31	0.40	0.64	0.31	0.14	0.047	0.32
Rouyn	300	-33	-36	29	21	6050	20	91	650	0.82	900	100	3.1	0.3	0.27	0.35	0.19	0.12	0.070	0.024	0.066
Saguenay	10	-30	-32	28	22	5700	18	86	710	0.88	975	140	2.5	0.4	0.28	0.36	0.58	0.32	0.15	0.052	0.31
Saguenay (Bagotville)	5	-31	-33	28	21	5700	18	86	690	0.86	925	160	2.4	0.4	0.29	0.38	0.59	0.34	0.16	0.053	0.31
Saguenay (Jonquière)	135	-30	-32	28	22	5650	18	86	710	0.87	925	160	3.1	0.4	0.27	0.35	0.58	0.32	0.15	0.052	0.31
Saguenay (Kenogami)	140	-30	-32	28	22	5650	18	86	690	0.86	925	160	3.1	0.4	0.27	0.35	0.58	0.32	0.15	0.051	0.31
Saint-Eustache	35	-25	-27	29	23	4500	23	96	820	0.92	1025	160	2.4	0.4	0.29	0.37	0.64	0.31	0.14	0.047	0.32
Saint-Jean-sur-Richelieu	35	-24	-26	29	23	4450	23	91	880	0.99	1010	180	2.2	0.4	0.32	0.41	0.63	0.31	0.13	0.046	0.32
Salaberry-de-Valleyfield	50	-23	-25	29	23	4400	23	96	760	0.87	900	180	2.3	0.4	0.33	0.42	0.64	0.31	0.14	0.047	0.33
Schefferville	550	-37	-39	24	16	8550	13	64	410	0.81	800	180	4.5	0.3	0.33	0.42	0.095	0.057	0.035	0.014	0.036
Senneterre	310	-34	-36	29	21	6180	22	91	740	0.91	925	100	3.3	0.3	0.25	0.32	0.20	0.13	0.079	0.025	0.065
Sept-Îles	5	-29	-31	24	18	6200	15	106	760	1.01	1125	300	4.1	0.4	0.42	0.54	0.30	0.22	0.098	0.037	0.12
Shawinigan	60	-26	-29	29	23	5050	22	102	820	0.96	1050	180	3.1	0.4	0.27	0.35	0.55	0.28	0.12	0.043	0.29
Shawville	170	-27	-30	30	23	4880	23	96	670	0.79	880	160	2.8	0.4	0.27	0.35	0.63	0.30	0.13	0.045	0.32
Sherbrooke	185	-28	-30	29	23	4700	23	96	900	1.03	1100	160	2.2	0.6	0.25	0.32	0.35	0.22	0.11	0.038	0.13
Sorel	10	-25	-27	29	23	4550	20	102	800	0.93	975	180	2.8	0.4	0.33	0.43	0.61	0.30	0.13	0.046	0.32
St-Félicien	105	-32	-34	28	22	5850	22	91	570	0.76	900	140	3.5	0.3	0.27	0.35	0.32	0.21	0.11	0.039	0.13
St-Georges-de-Cacouna	35	-25	-27	26	21	5400	18	91	660	0.85	925	180	3.2	0.6	0.39	0.50	0.80	0.46	0.21	0.068	0.39
St-Hubert	25	-24	-26	30	23	4490	23	91	820	0.92	1020	180	2.5	0.4	0.33	0.42	0.64	0.31	0.14	0.047	0.33
Saint-Hubert-de- Rivière-du-Loup	310	-26	-28	26	21	5520	22	91	740	0.90	1025	180	4.4	0.6	0.31	0.40	0.61	0.36	0.17	0.058	0.24
St-Hyacinthe	35	-24	-27	30	23	4500	21	91	840	0.95	1030	160	2.3	0.4	0.27	0.35	0.55	0.28	0.13	0.043	0.28
St-Jérôme	95	-26	-28	29	23	4820	23	96	830	0.97	1025	160	2.7	0.4	0.29	0.37	0.59	0.30	0.13	0.045	0.30
St-Jovite	230	-29	-31	28	22	5250	23	96	810	0.99	1025	160	2.8	0.4	0.25	0.33	0.61	0.30	0.14	0.043	0.32

Table C-2 (Continued)

Province and Location	Elev., m	Design Temperature				Degree-Days Below 18°C	15 Min. Rain, mm	One Day Rain, 1/50, mm	Ann. Rain, mm	Moist. Index	Ann. Tot. Ppn., mm	Driving Rain Wind Pres- sures, Pa, 1/5	Snow Load, kPa, 1/50		Hourly Wind Pressures, kPa		Seismic Data ⁽¹⁾				
		January		July 2.5%									S _e	S _r	1/10	1/50	S _a (0.2)	S _a (0.5)	S _a (1.0)	S _a (2.0)	PGA
		2.5% °C	1% °C	Dry °C	Wet °C																
St-Lazare-Hudson	60	-24	-26	30	23	4520	23	96	750	0.85	950	180	2.3	0.4	0.33	0.42	0.64	0.31	0.14	0.048	0.32
St-Nicolas	65	-25	-28	28	22	4990	20	102	890	1.01	1200	200	3.5	0.6	0.33	0.42	0.55	0.31	0.15	0.051	0.30
Ste-Agathe-des-Monts	360	-28	-30	28	22	5390	23	96	820	1.00	1170	140	3.4	0.4	0.27	0.35	0.56	0.29	0.14	0.043	0.30
Sutton	185	-25	-27	29	23	4600	23	96	990	1.09	1260	160	2.4	0.4	0.32	0.41	0.39	0.23	0.12	0.039	0.16
Tadoussac	65	-26	-28	27	21	5450	18	96	700	0.88	1000	180	3.4	0.4	0.40	0.52	0.68	0.40	0.19	0.061	0.32
Témiscaming	240	-30	-32	30	22	5020	23	96	730	0.88	940	100	2.5	0.4	0.25	0.32	0.55	0.26	0.11	0.036	0.30
Terrebonne	20	-25	-27	29	23	4500	23	96	830	0.93	1025	160	2.6	0.4	0.31	0.40	0.63	0.31	0.14	0.048	0.32
Thetford Mines	330	-26	-28	28	22	5120	22	107	950	1.06	1230	160	3.3	0.6	0.27	0.35	0.36	0.24	0.12	0.043	0.12
Thurso	50	-26	-28	30	23	4820	23	91	800	0.93	950	160	2.4	0.4	0.31	0.40	0.58	0.29	0.14	0.043	0.28
Trois-Rivières	25	-25	-28	29	23	4900	20	107	860	0.98	1050	180	2.8	0.4	0.33	0.43	0.59	0.30	0.13	0.045	0.31
Val-d'Or	310	-33	-36	29	21	6180	20	86	640	0.83	925	100	3.4	0.3	0.25	0.32	0.22	0.14	0.079	0.027	0.076
Varennes	15	-24	-26	30	23	4500	23	96	810	0.94	1000	160	2.6	0.4	0.31	0.40	0.64	0.31	0.13	0.047	0.32
Verchères	15	-24	-26	30	23	4450	23	96	810	0.94	1000	160	2.7	0.4	0.33	0.43	0.63	0.31	0.13	0.047	0.32
Victoriaville	125	-26	-28	29	23	4900	21	102	850	0.97	1100	180	2.6	0.6	0.27	0.35	0.39	0.23	0.12	0.041	0.18
Ville-Marie	200	-31	-34	30	22	5550	23	96	630	0.80	825	120	2.3	0.4	0.31	0.40	0.27	0.16	0.083	0.027	0.13
Wakefield	120	-27	-30	30	23	4820	23	91	780	0.91	1020	160	3.1	0.4	0.27	0.34	0.62	0.31	0.14	0.046	0.31
Waterloo	205	-25	-27	29	23	4650	23	96	980	1.08	1250	160	2.5	0.4	0.27	0.35	0.37	0.23	0.12	0.039	0.14
Windsor	150	-25	-27	29	23	4700	23	96	930	1.04	1075	160	2.3	0.4	0.25	0.32	0.35	0.22	0.11	0.038	0.12
New Brunswick																					
Alma	5	-21	-23	26	20	4500	18	144	1175	1.32	1450	260	2.3	0.6	0.37	0.48	0.24	0.16	0.082	0.028	0.12
Bathurst	10	-23	-26	30	22	5020	20	106	775	0.94	1020	180	3.5	0.6	0.37	0.48	0.34	0.21	0.10	0.035	0.19
Campbellton	30	-26	-28	29	22	5500	20	107	725	0.93	1025	180	3.6	0.4	0.35	0.45	0.37	0.24	0.12	0.041	0.19
Edmundston	160	-27	-29	28	22	5320	23	91	750	0.94	1000	160	3.4	0.6	0.29	0.38	0.46	0.30	0.14	0.050	0.18
Fredericton	15	-24	-27	29	22	4670	22	112	900	1.02	1100	160	3.1	0.6	0.29	0.38	0.33	0.21	0.10	0.034	0.18
Gagetown	20	-24	-26	29	22	4460	20	112	900	1.04	1125	180	2.8	0.6	0.31	0.40	0.30	0.19	0.098	0.033	0.15
Grand Falls	115	-27	-30	28	22	5300	23	107	850	1.00	1100	160	3.6	0.6	0.29	0.38	0.38	0.26	0.13	0.044	0.20
Miramichi	5	-24	-26	30	22	4950	20	96	825	0.97	1050	200	3.4	0.6	0.32	0.41	0.34	0.21	0.096	0.033	0.19
Moncton	20	-23	-25	28	21	4680	20	112	850	1.02	1175	220	3.0	0.6	0.39	0.50	0.25	0.17	0.084	0.029	0.14

Table C-2 (Continued)

Province and Location	Elev., m	Design Temperature				Degree-Days Below 18°C	15 Min. Rain, mm	One Day Rain, 1/50, mm	Ann. Rain, mm	Moist. Index	Ann. Tot. Ppn., mm	Driving Rain Wind Pres- sures, Pa, 1/5	Snow Load, kPa, 1/50		Hourly Wind Pressures, kPa		Seismic Data ⁽¹⁾				
		January		July 2.5%									S _s	S _t	1/10	1/50	S _a (0.2)	S _a (0.5)	S _a (1.0)	S _a (2.0)	PGA
		2.5% °C	1% °C	Dry °C	Wet °C																
Oromocto	20	-24	-26	29	22	4650	22	112	900	1.02	1110	160	3.0	0.6	0.30	0.39	0.31	0.20	0.10	0.034	0.17
Sackville	15	-22	-24	27	21	4590	18	112	975	1.14	1175	220	2.5	0.6	0.38	0.49	0.22	0.15	0.079	0.027	0.11
Saint Andrews	35	-22	-24	25	20	4680	19	123	1000	1.15	1200	220	2.3	0.6	0.35	0.45	0.66	0.30	0.13	0.039	0.35
Saint George	35	-21	-23	25	20	4680	18	123	1000	1.15	1200	220	2.3	0.6	0.35	0.45	0.58	0.27	0.12	0.040	0.30
Saint John	5	-22	-24	25	20	4570	18	139	1100	1.27	1425	260	2.3	0.6	0.41	0.53	0.29	0.18	0.093	0.031	0.15
Shippagan	5	-22	-24	28	21	4930	18	96	800	0.98	1050	260	3.4	0.6	0.48	0.63	0.29	0.18	0.090	0.031	0.17
St. Stephen	20	-24	-26	28	22	4700	20	123	1000	1.15	1160	180	2.5	0.6	0.33	0.42	0.62	0.29	0.12	0.039	0.33
Woodstock	60	-26	-29	30	22	4910	22	107	875	0.99	1100	160	3.1	0.6	0.29	0.37	0.35	0.22	0.12	0.039	0.20
Nova Scotia																					
Amherst	25	-21	-24	27	21	4500	18	118	950	1.12	1150	220	2.4	0.6	0.37	0.48	0.21	0.14	0.076	0.026	0.085
Antigonish	10	-17	-20	27	21	4510	15	123	1100	1.25	1250	240	2.1	0.6	0.42	0.54	0.19	0.13	0.078	0.025	0.068
Bridgewater	10	-15	-17	27	20	4140	16	144	1300	1.45	1475	260	1.9	0.6	0.43	0.55	0.23	0.15	0.084	0.027	0.084
Canso	5	-13	-15	25	20	4400	15	123	1325	1.48	1400	260	1.7	0.6	0.48	0.61	0.23	0.15	0.085	0.027	0.091
Debert	45	-21	-24	27	21	4500	18	118	1000	1.16	1200	240	2.1	0.6	0.37	0.48	0.21	0.14	0.078	0.026	0.080
Digby	35	-15	-17	25	20	4020	15	130	1100	1.27	1275	260	2.2	0.6	0.43	0.55	0.23	0.14	0.081	0.027	0.087
Greenwood (CFB)	28	-18	-20	29	22	4140	16	118	925	1.05	1100	280	2.7	0.6	0.42	0.54	0.23	0.14	0.081	0.027	0.088
Halifax Region																					
Dartmouth	10	-16	-18	26	20	4100	18	144	1250	1.40	1400	280	1.6	0.6	0.45	0.58	0.23	0.15	0.085	0.027	0.086
Halifax	55	-16	-18	26	20	4000	17	150	1350	1.49	1500	280	1.9	0.6	0.45	0.58	0.23	0.15	0.085	0.027	0.086
Kentville	25	-18	-20	28	21	4130	17	118	950	1.09	1200	260	2.4	0.6	0.42	0.54	0.23	0.14	0.080	0.027	0.087
Liverpool	20	-16	-18	27	20	3990	16	150	1325	1.48	1425	280	1.7	0.6	0.48	0.61	0.24	0.15	0.087	0.028	0.090
Lockeport	5	-14	-16	25	20	4000	18	139	1250	1.42	1450	280	1.4	0.6	0.47	0.60	0.25	0.15	0.088	0.028	0.095
Louisburg	5	-15	-17	26	20	4530	15	118	1300	1.46	1500	300	2.1	0.7	0.50	0.65	0.22	0.14	0.082	0.026	0.081
Lunenburg	25	-15	-17	26	20	4140	16	144	1300	1.45	1450	260	1.9	0.6	0.48	0.61	0.23	0.15	0.085	0.028	0.086
New Glasgow	30	-19	-21	27	21	4320	15	135	975	1.13	1200	260	2.2	0.6	0.43	0.55	0.18	0.12	0.075	0.025	0.057
North Sydney	20	-16	-19	27	21	4500	15	123	1200	1.36	1475	300	2.4	0.6	0.46	0.59	0.19	0.12	0.075	0.024	0.067
Pictou	25	-19	-21	27	21	4310	15	107	950	1.11	1175	260	2.2	0.6	0.43	0.55	0.17	0.12	0.073	0.024	0.053
Port Hawkesbury	40	-17	-19	27	21	4500	15	128	1325	1.48	1450	260	2.1	0.6	0.57	0.74	0.21	0.13	0.080	0.026	0.076

Table C-2 (Continued)

Province and Location	Elev., m	Design Temperature				Degree-Days Below 18°C	15 Min. Rain, mm	One Day Rain, 1/50, mm	Ann. Rain, mm	Moist. Index	Ann. Tot. Ppn., mm	Driving Rain Wind Pres- sures, Pa, 1/5	Snow Load, kPa, 1/50		Hourly Wind Pressures, kPa		Seismic Data ⁽¹⁾				
		January		July 2.5%									S _s	S _t	1/10	1/50	S _a (0.2)	S _a (0.5)	S _a (1.0)	S _a (2.0)	PGA
		2.5% °C	1% °C	Dry °C	Wet °C																
Springhill	185	-20	-23	27	21	4540	18	118	1075	1.22	1175	220	3.1	0.6	0.37	0.48	0.21	0.14	0.077	0.026	0.085
Stewiacke	25	-20	-22	27	21	4400	18	128	1050	1.20	1250	240	1.8	0.6	0.39	0.50	0.21	0.14	0.081	0.027	0.085
Sydney	5	-16	-19	27	21	4530	15	123	1200	1.36	1475	300	2.3	0.6	0.46	0.59	0.19	0.13	0.077	0.024	0.070
Tatamagouche	25	-20	-23	27	21	4380	18	118	875	1.05	1150	260	2.2	0.6	0.43	0.55	0.18	0.12	0.073	0.025	0.056
Truro	25	-20	-22	27	21	4500	18	118	1000	1.16	1175	240	2.0	0.6	0.37	0.48	0.21	0.14	0.079	0.026	0.076
Wolfville	35	-19	-21	28	21	4140	17	118	975	1.13	1175	260	2.4	0.6	0.42	0.54	0.22	0.14	0.080	0.026	0.088
Yarmouth	10	-14	-16	22	19	3990	19	135	1125	1.32	1260	280	1.8	0.6	0.43	0.56	0.22	0.14	0.083	0.027	0.082
Prince Edward island																					
Charlottetown	5	-20	-22	26	21	4460	16	107	900	1.09	1150	350	2.7	0.6	0.43	0.56	0.15	0.11	0.070	0.024	0.049
Souris	5	-19	-21	27	21	4550	15	112	950	1.14	1130	350	2.7	0.6	0.45	0.58	0.14	0.11	0.067	0.023	0.044
Summerside	10	-20	-22	27	21	4600	16	112	825	1.03	1060	350	3.1	0.6	0.47	0.60	0.17	0.12	0.074	0.026	0.050
Tignish	10	-20	-22	27	21	4770	16	96	800	1.01	1100	350	3.2	0.6	0.51	0.66	0.19	0.13	0.077	0.027	0.055
Newfoundland																					
Argentia	15	-12	-14	21	18	4600	15	107	1250	1.47	1400	400	2.4	0.7	0.58	0.75	0.17	0.12	0.074	0.024	0.060
Bonavista	15	-14	-16	24	19	5000	18	96	825	1.11	1010	400	2.8	0.6	0.65	0.84	0.16	0.11	0.072	0.024	0.056
Buchans	255	-24	-27	27	20	5250	13	107	850	1.04	1125	200	4.7	0.6	0.47	0.60	0.13	0.090	0.058	0.020	0.044
Cape Harrison	5	-29	-31	26	16	6900	10	106	475	0.94	950	350	6.3	0.4	0.47	0.60	0.22	0.17	0.082	0.027	0.079
Cape Race	5	-11	-13	19	18	4900	18	130	1425	1.66	1550	400	2.3	0.7	0.81	1.05	0.20	0.14	0.084	0.027	0.071
Channel-Port aux Basques	5	-13	-15	19	18	5000	13	123	1175	1.43	1520	450	3.0	0.7	0.60	0.78	0.14	0.10	0.064	0.022	0.048
Comer Brook	35	-16	-18	26	20	4760	13	91	875	1.08	1190	300	3.7	0.6	0.43	0.55	0.12	0.087	0.056	0.019	0.043
Gander	125	-18	-20	27	20	5110	18	91	775	1.01	1180	280	3.7	0.6	0.47	0.60	0.14	0.10	0.065	0.022	0.047
Grand Bank	5	-14	-15	20	18	4550	15	123	1350	1.58	1525	400	2.4	0.7	0.57	0.74	0.19	0.13	0.079	0.025	0.063
Grand Falls	60	-26	-29	27	20	5020	15	86	775	0.97	1030	240	3.4	0.6	0.47	0.60	0.13	0.093	0.061	0.020	0.045
Happy Valley-Goose Bay	15	-31	-32	27	19	6670	18	80	575	0.83	960	160	5.3	0.4	0.33	0.42	0.13	0.091	0.057	0.020	0.045
Labrador City	550	-36	-38	24	17	7710	15	70	500	0.82	880	140	4.3	0.3	0.31	0.40	0.095	0.076	0.048	0.019	0.036
St. Anthony	10	-25	-27	22	18	6440	13	86	800	1.07	1280	450	5.1	0.6	0.67	0.87	0.14	0.10	0.065	0.022	0.048
St. John's	65	-15	-16	24	20	4800	18	118	1200	1.41	1575	400	2.9	0.7	0.60	0.78	0.17	0.12	0.076	0.025	0.057

Table C-2 (Continued)

Province and Location	Elev., m	Design Temperature				Degree-Days Below 18°C	15 Min. Rain, mm	One Day Rain, 1/50, mm	Ann. Rain, mm	Moist. Index	Ann. Tot. Ppn., mm	Driving Rain Wind Pres- sures, Pa, 1/5	Snow Load, kPa, 1/50		Hourly Wind Pressures, kPa		Seismic Data ⁽¹⁾				
		January		July 2.5%									S _s	S _t	1/10	1/50	S _a (0.2)	S _a (0.5)	S _a (1.0)	S _a (2.0)	PGA
		2.5% °C	1% °C	Dry °C	Wet °C																
Stephenville	25	-16	-18	24	19	4850	14	102	1000	1.19	1275	350	3.5	0.6	0.45	0.58	0.12	0.091	0.058	0.020	0.043
Twin Falls	425	-35	-37	24	17	7790	15	70	500	0.85	950	120	4.6	0.4	0.31	0.40	0.095	0.068	0.040	0.016	0.036
Wabana	75	-15	-17	24	20	4750	18	112	1125	1.34	1500	400	3.0	0.7	0.58	0.75	0.17	0.12	0.075	0.025	0.056
Wabush	550	-36	-38	24	17	7710	15	70	500	0.82	880	140	4.3	0.3	0.31	0.40	0.095	0.077	0.048	0.019	0.036
Yukon																					
Aishihik	920	-44	-46	23	15	7500	8	43	190	0.57	275	40	1.9	0.1	0.29	0.38	0.27	0.20	0.13	0.076	0.14
Dawson	330	-50	-51	26	16	8120	10	49	200	0.57	350	40	2.7	0.1	0.24	0.31	0.54	0.34	0.17	0.094	0.25
Destruction Bay	815	-43	-45	23	14	7800	8	49	190	0.62	300	80	1.6	0.1	0.47	0.60	0.73	0.49	0.27	0.15	0.33
Faro	670	-46	-47	25	16	7300	10	33	215	0.58	315	40	2.3	0.1	0.27	0.35	0.21	0.13	0.067	0.040	0.11
Haines Junction	600	-45	-47	24	14	7100	8	51	145	0.56	315	180	2.2	0.1	0.26	0.34	0.72	0.47	0.27	0.15	0.33
Snag	595	-51	-53	23	16	8300	8	59	290	0.57	350	40	2.2	0.1	0.24	0.31	0.61	0.40	0.22	0.12	0.28
Teslin	690	-42	-44	24	15	6770	10	38	200	0.51	340	40	2.9	0.1	0.26	0.34	0.19	0.11	0.065	0.041	0.099
Watson Lake	685	-46	-48	26	16	7470	10	54	250	0.55	410	60	3.1	0.1	0.27	0.35	0.45	0.26	0.12	0.067	0.22
Whitehorse	655	-41	-43	25	15	6580	8	43	170	0.49	275	40	1.8	0.1	0.29	0.38	0.22	0.15	0.10	0.060	0.11
Northwest Territories																					
Aklavik	5	-42	-44	26	17	9600	6	49	115	0.67	250	60	2.3	0.1	0.37	0.48	0.18	0.12	0.060	0.035	0.11
Echo Bay / Port Radium	195	-42	-44	22	16	9300	8	60	160	0.70	250	80	3.0	0.1	0.41	0.53	0.095	0.057	0.026	0.009	0.036
Fort Good Hope	100	-43	-45	28	18	8700	9	60	140	0.60	280	80	2.9	0.1	0.34	0.44	0.15	0.10	0.059	0.036	0.080
Fort McPherson	25	-44	-46	26	17	9150	6	50	145	0.67	315	60	2.3	0.1	0.31	0.40	0.44	0.27	0.13	0.078	0.21
Fort Providence	150	-40	-43	28	18	7620	10	71	210	0.56	350	100	2.4	0.1	0.27	0.35	0.095	0.057	0.026	0.011	0.036
Fort Resolution	160	-40	-42	26	18	7750	10	60	175	0.61	300	140	2.3	0.1	0.30	0.39	0.095	0.057	0.026	0.008	0.036
Fort Simpson	120	-42	-44	28	19	7660	12	76	225	0.56	360	80	2.3	0.1	0.30	0.39	0.11	0.080	0.047	0.029	0.059
Fort Smith	205	-41	-43	28	19	7300	10	65	250	0.56	350	80	2.3	0.2	0.30	0.39	0.095	0.057	0.026	0.008	0.036
Hay River	45	-38	-41	27	18	7550	10	60	200	0.62	150	140	2.4	0.1	0.27	0.35	0.095	0.057	0.026	0.008	0.036
Holman/Ulukhaqtuq	10	-39	-41	18	12	10700	3	44	80	0.93	250	120	2.1	0.1	0.66	0.86	0.095	0.057	0.027	0.009	0.036
Inuvik	45	-43	-45	26	17	9600	6	49	115	0.67	425	60	2.3	0.1	0.37	0.48	0.10	0.069	0.041	0.026	0.060
Mould Bay	5	-44	-46	11	8	12900	3	33	25	0.94	100	140	1.5	0.1	0.45	0.58	0.32	0.16	0.084	0.024	0.16
Norman Wells	65	-43	-45	28	18	8510	9	60	165	0.57	320	80	2.7	0.1	0.34	0.44	0.51	0.31	0.16	0.086	0.24

Table C-2 (Continued)

Province and Location	Elev., m	Design Temperature				Degree-Days Below 18°C	15 Min. Rain, mm	One Day Rain, 1/50, mm	Ann. Rain, mm	Moist. Index	Ann. Tot. Ppn., mm	Driving Rain Wind Pressures, Pa, 1/5	Snow Load, kPa, 1/50		Hourly Wind Pressures, kPa		Seismic Data ⁽¹⁾				
		January		July 2.5%									S _s	S _t	1/10	1/50	S _a (0.2)	S _a (0.5)	S _a (1.0)	S _a (2.0)	PGA
		2.5% °C	1% °C	Dry °C	Wet °C																
Rae-Edzo	160	-42	-44	25	17	8300	10	60	175	0.59	275	80	2.3	0.1	0.36	0.47	0.095	0.057	0.026	0.008	0.036
Tungsten	1340	-49	-51	26	16	7700	10	44	315	0.75	640	40	4.3	0.1	0.34	0.44	0.51	0.31	0.16	0.087	0.24
Wrigley	80	-42	-44	28	18	8050	10	54	220	0.58	350	80	2.8	0.1	0.30	0.39	0.51	0.31	0.15	0.082	0.24
Yellowknife	160	-41	-44	25	17	8170	10	60	175	0.58	275	100	2.2	0.1	0.36	0.47	0.095	0.057	0.026	0.008	0.036
Nunavut																					
Alert	5	-43	-44	13	8	13030	3	22	20	0.95	150	100	1.6	0.1	0.58	0.75	0.095	0.057	0.027	0.009	0.036
Arctic Bay	15	-42	-44	14	10	11900	3	38	60	0.90	150	160	2.1	0.1	0.43	0.55	0.16	0.12	0.081	0.028	0.053
Arviat / Eskimo Point	5	-40	-41	22	16	9850	8	65	225	0.85	300	240	2.9	0.2	0.45	0.58	0.095	0.057	0.026	0.008	0.036
Baker Lake	5	-42	-44	23	15	10700	5	55	160	0.84	260	180	2.9	0.2	0.42	0.54	0.095	0.057	0.027	0.008	0.036
Cambridge Bay/Iqaluktuuttiaq	15	-41	-44	18	13	11670	4	38	70	0.89	140	100	1.6	0.1	0.42	0.54	0.095	0.057	0.026	0.008	0.036
Chesterfield Inlet/Igluligaarjuk	10	-40	-41	20	14	10500	5	60	175	0.88	270	240	3.0	0.2	0.43	0.56	0.14	0.077	0.044	0.012	0.048
Clyde River /Kangiqitugaapik	5	-40	-42	14	10	11300	5	44	55	0.90	225	220	3.5	0.2	0.56	0.72	0.49	0.32	0.18	0.058	0.24
Coppermine (Kugluktuk)	10	-41	-43	23	16	10300	6	65	140	0.84	150	80	2.6	0.1	0.36	0.46	0.095	0.057	0.026	0.008	0.036
Coral Harbour /Salliq	15	-41	-42	20	14	10720	5	65	150	0.87	280	200	3.8	0.2	0.54	0.69	0.20	0.10	0.056	0.015	0.10
Eureka	5	-47	-48	12	8	13500	3	27	25	0.95	70	100	1.6	0.1	0.43	0.55	0.29	0.13	0.071	0.022	0.15
Iqaluit	45	-40	-41	17	12	9980	5	58	200	0.86	433	200	2.9	0.2	0.45	0.58	0.12	0.093	0.059	0.020	0.036
Isachsen	10	-46	-48	12	9	13600	3	27	25	0.95	75	140	1.6	0.1	0.47	0.60	0.36	0.21	0.10	0.034	0.15
Nottingham Island	30	-37	-39	16	13	10000	5	54	175	0.88	325	200	4.5	0.2	0.60	0.78	0.20	0.10	0.054	0.015	0.10
Rankin Inlet (Kangiqiniq)	10	-41	-42	21	15	10500	5	65	180	0.87	250	240	3.0	0.2	0.47	0.60	0.095	0.057	0.031	0.009	0.036
Resolute	25	-42	-43	11	9	12360	3	27	50	0.93	140	180	1.7	0.1	0.54	0.69	0.30	0.15	0.083	0.025	0.15
Resolution Island	5	-32	-34	12	10	9000	5	71	240	0.89	550	200	5.2	0.2	0.95	1.23	0.40	0.21	0.11	0.033	0.20

Notes to Table C-2:

(1) Refer to the Commentary on Design for Seismic Effects in the Structural Commentaries on the National Building Code of Canada 2010 for more detailed data on seismic parameters in selected metropolitan areas.