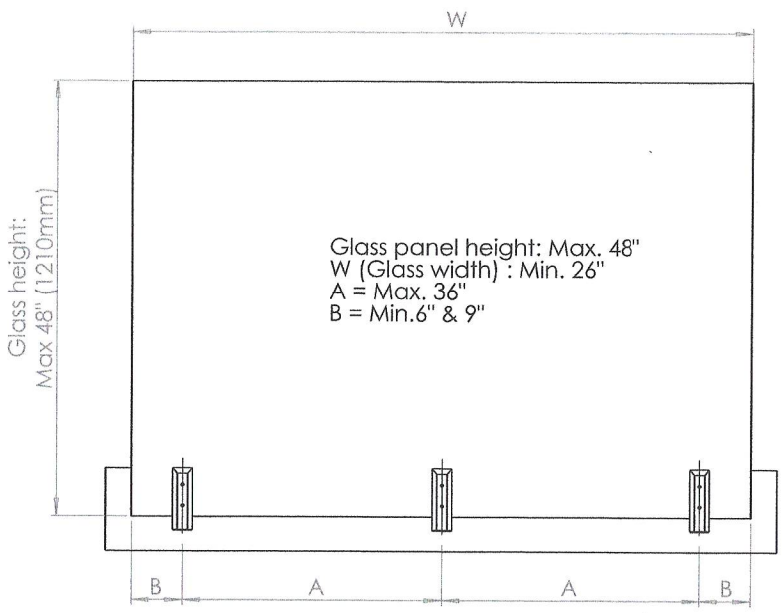


4

3

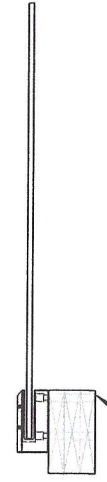
2

1



Notes:

1. Load resistance of the glass and spigot shown in this drawing meet the load requirement specified in section 9.8.8.2 and 4.1.5.14.1 (c) of the 2015 NBC and 2012 OBC
2. Glass with a thickness of 1/2" or 12mm, Must be tempered or laminated installed in accordance with the requirement of CAN/CGSB-12.1-M.
3. This certification is for guard components only. Fastening the spigot to the support structure is a site condition and installer must ensure that the fasteners are adequate to resist the design loads.
4. Glass supports must be fastened to the material which are adequate to hold the design loads



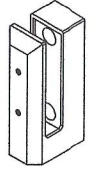
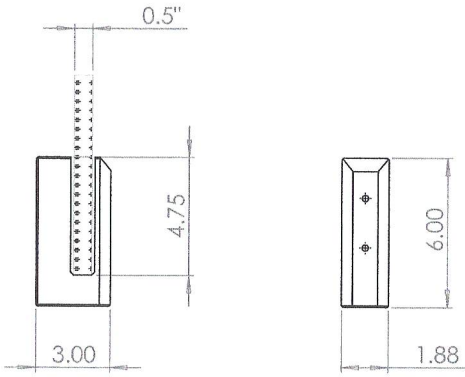
Fasteners used for testing:

- On Wood: -1/2" bolt minimum
- On Concrete: - 1/2" concrete anchor bolts min. of 5" embedded with EPOXY



Common size:

W (in)	A (in)	B (in)	No of spigots
72	27	9	3
60	22	8	3
48	32	8	2
36	22	7	2
26	14	6	2



PROPRIETARY AND CONFIDENTIAL
 THE INFORMATION CONTAINED IN THIS DRAWING IS THE SOLE PROPERTY OF <GREY GOAT>. ANY REPRODUCTION IN PART OR AS A WHOLE WITHOUT THE WRITTEN PERMISSION OF <GREY GOAT> IS PROHIBITED.

UNLESS OTHERWISE SPECIFIED:
 DIMENSIONS ARE IN INCHES
 TOLERANCES:
 FRACTIONAL ±
 ANGULAR: MACH ± BEND ±
 TWO PLACE DECIMAL ±
 THREE PLACE DECIMAL ±
 INTERPRET GEOMETRIC TOLERANCING PER:
 MATERIAL Stainless - 2205
 FINISH Brushed / Matte Black
 DO NOT SCALE DRAWING

	NAME	DATE
DRAWN	PS	2022-05-09
CHECKED		
ENG APPR.		
MFG APPR.		
Q.A.		
COMMENTS:		

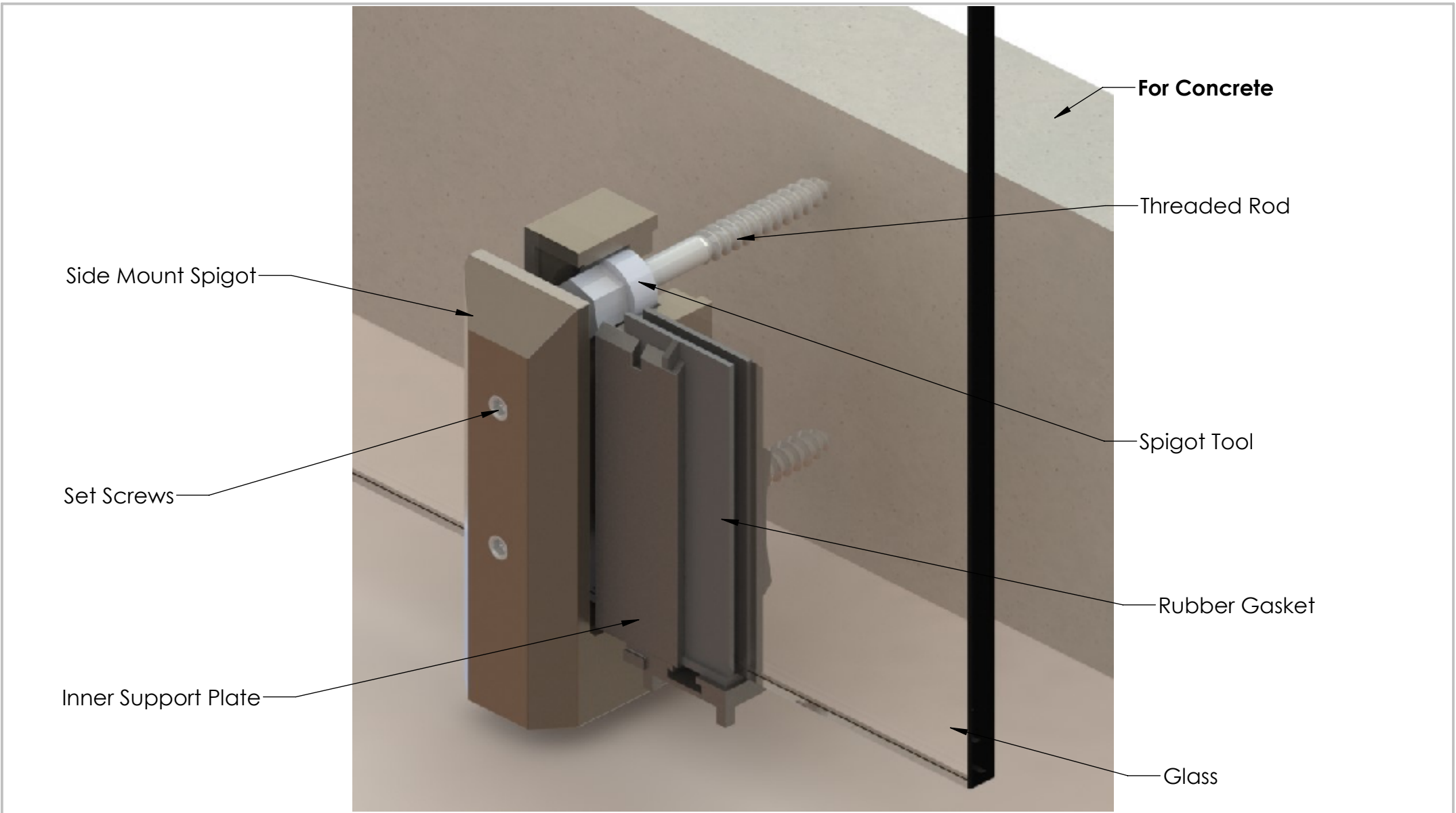
Part no: GGS-SPIGOT-SM
 TITLE: Face mount spigot
 SIZE DWG. NO. REV
B FMS092022 0
 SCALE: 1:10 WEIGHT: SHEET 1 OF 1

4

3

2

1



Side Mount Spigot

Set Screws

Inner Support Plate

For Concrete

Threaded Rod

Spigot Tool

Rubber Gasket

Glass



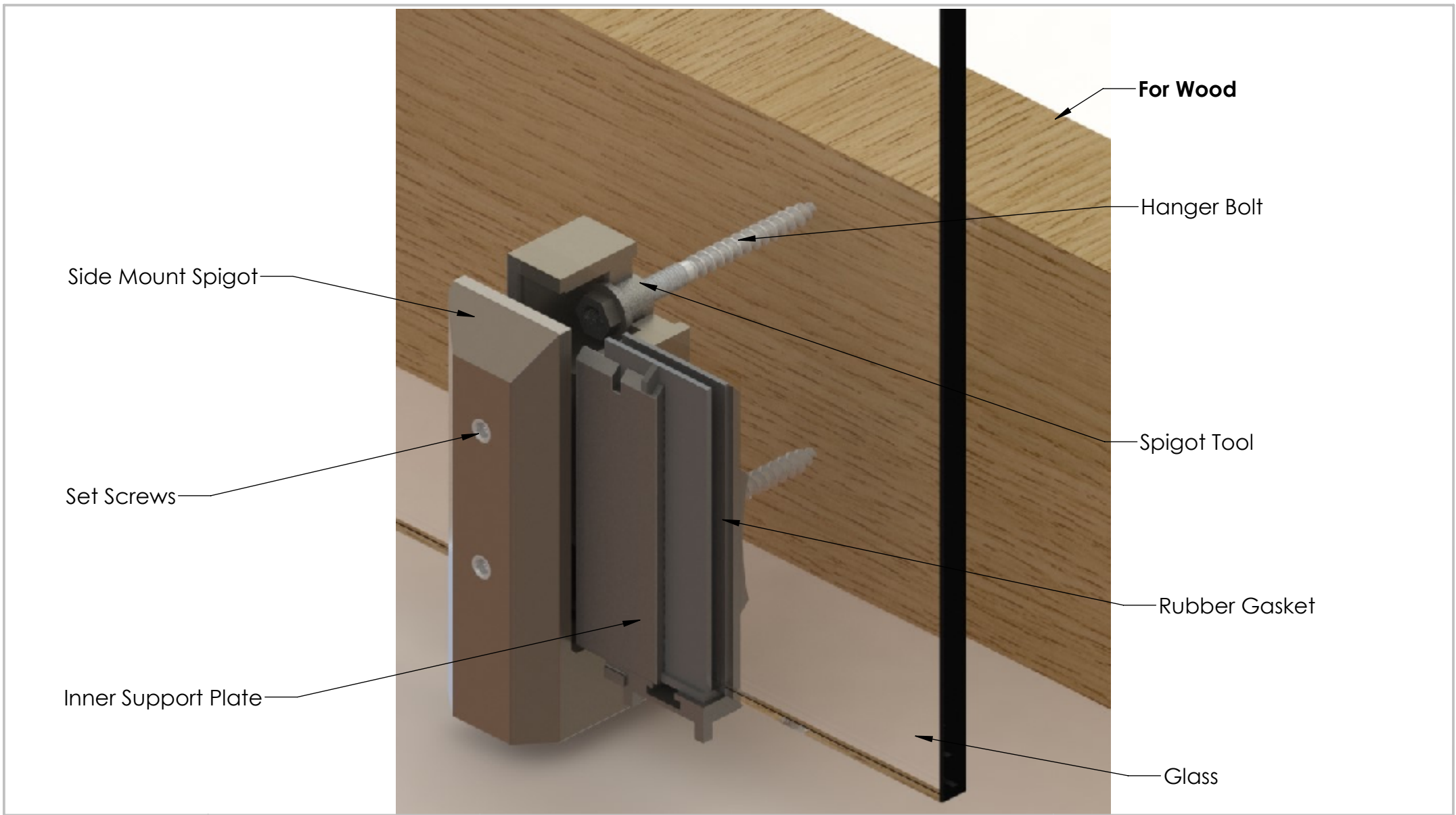
PROPRIETARY AND CONFIDENTIAL
 THE INFORMATION CONTAINED IN THIS DRAWING IS THE SOLE PROPERTY OF GREY GOAT SUPPLY LTD ANY REPRODUCTION IN PART OR AS A WHOLE WITHOUT THE WRITTEN PERMISSION OF GREY GOAT SUPPLY LTD IS PROHIBITED

SIDE MOUNT SPIGOT

Duplex 2205 - Square

VISIT OUR WEBSITE FOR MORE INFO
www.ggshardware.com

FOR INQUIRES PLEASE CONTACT
products@greygoatsupply.com



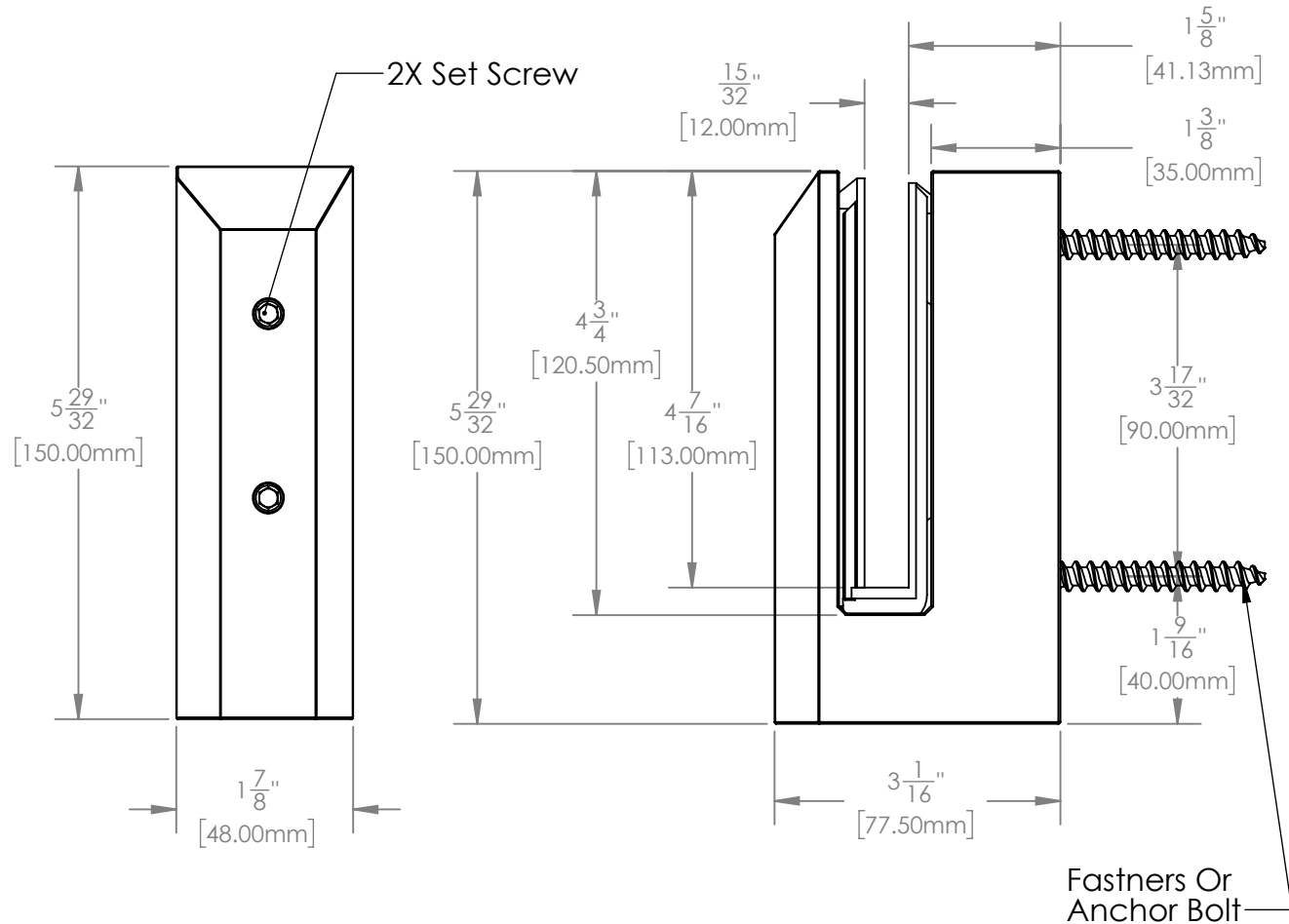
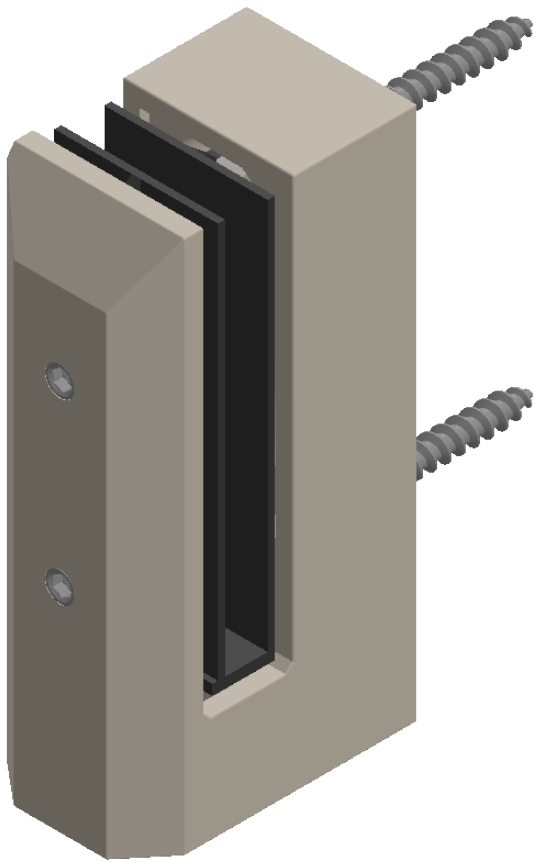
PROPRIETARY AND CONFIDENTIAL
 THE INFORMATION CONTAINED IN THIS
 DRAWING IS THE SOLE PROPERTY OF GREY
 GOAT SUPPLY LTD ANY REPRODUCTION IN
 PART OR AS A WHOLE WITHOUT THE WRITTEN
 PERMISSION OF GREY GOAT SUPPLY LTD IS
 PROHIBITED

SIDE MOUNT SPIGOT

Duplex 2205 - Square

VISIT OUR WEBSITE FOR MORE INFO
www.ggshardware.com

FOR INQUIRES PLEASE CONTACT
products@greygoatsupply.com



PROPRIETARY AND CONFIDENTIAL
 THE INFORMATION CONTAINED IN THIS DRAWING IS THE SOLE PROPERTY OF GREY GOAT SUPPLY LTD ANY REPRODUCTION IN PART OR AS A WHOLE WITHOUT THE WRITTEN PERMISSION OF GREY GOAT SUPPLY LTD IS PROHIBITED

SIDE MOUNT SPIGOT

Duplex 2205 - Square
 Overall Dimension

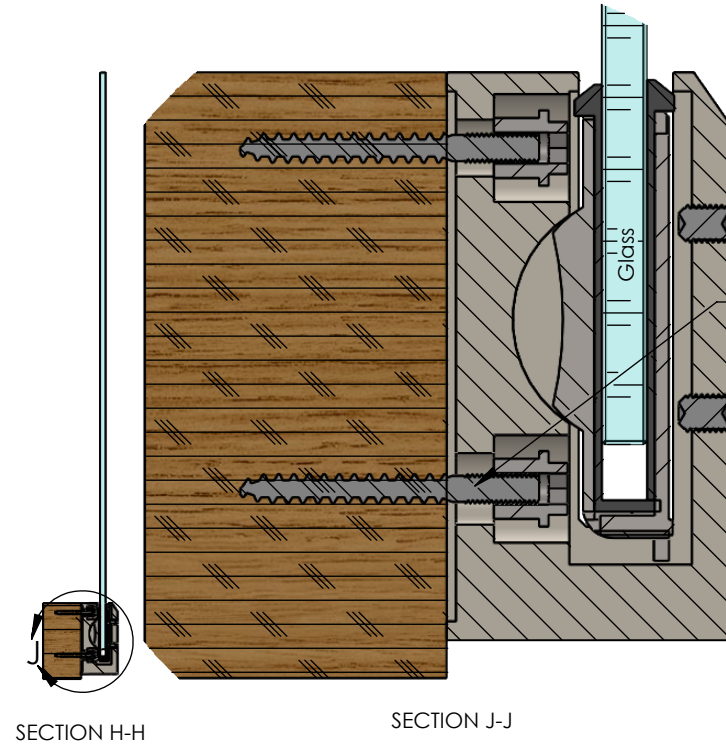
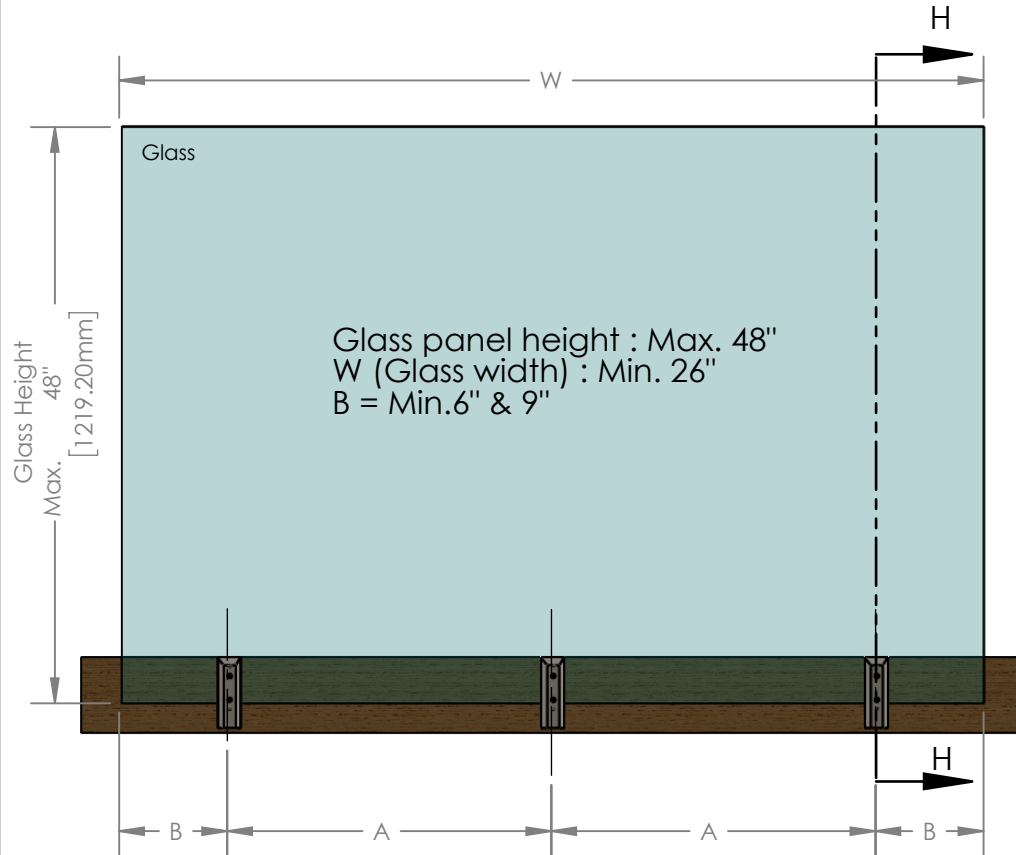
VISIT OUR WEBSITE FOR MORE INFO
www.ggshardware.com

FOR INQUIRES PLEASE CONTACT
products@greygoatsupply.com

Notes:

1. Load resistance of the glass and spigot shown in this drawing meet the load requirement specified in section 9.8.8.2 and 4.1.5.14.1 (c) of the 2015 NBC and 2012 OBC.
2. Glass with a thickness of 1/2" or 12mm, Must be tempered or laminated installed in accordance with the requirement of CAN/CGSB-12.1-M.
3. This certification is for guard components only. Fastening the spigot to the support structure is a site condition and Installer must ensure that the fasteners are adequate to resist the design loads.
4. Glass supports must be fastened to the material which are adequate to hold the design loads

W(in)	A(in)	B(in)	No. of Spigots
72	27	9	3
60	22	8	3
48	32	8	2
36	22	7	2
26	14	6	2



Fasteners used for testing:

- On Wood: 1/2" Bolt Minimum
- On Concrete: 1/2" concrete anchor bolts min. of 5" embedded with Epoxy



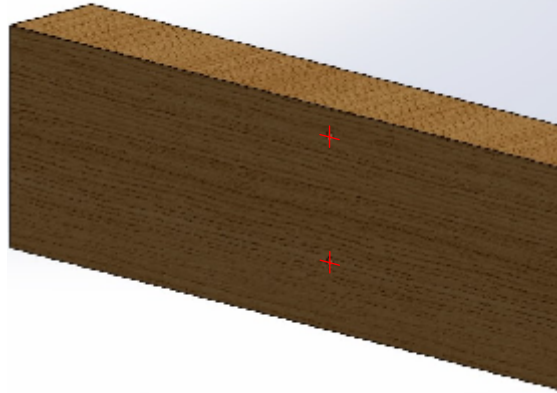
PROPRIETARY AND CONFIDENTIAL
 THE INFORMATION CONTAINED IN THIS DRAWING IS THE SOLE PROPERTY OF GREY GOAT SUPPLY LTD ANY REPRODUCTION IN PART OR AS A WHOLE WITHOUT THE WRITTEN PERMISSION OF GREY GOAT SUPPLY LTD IS PROHIBITED

SIDE MOUNT SPIGOT

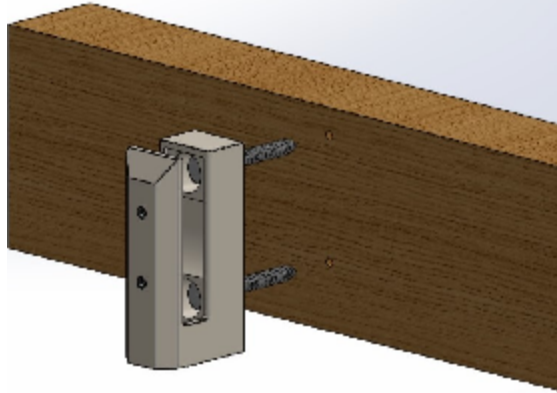
Duplex 2205 - Square
 Installation Guide

VISIT OUR WEBSITE FOR MORE INFO
www.ggshardware.com

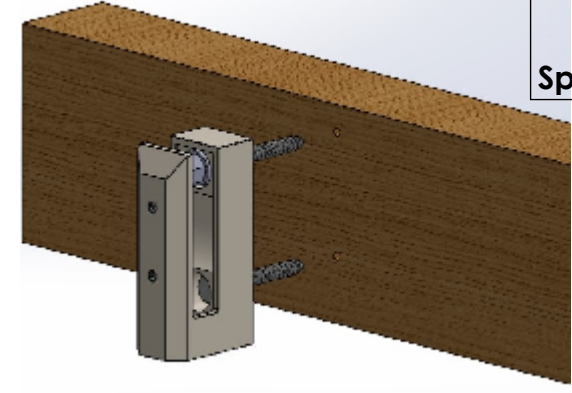
FOR INQUIRES PLEASE CONTACT
products@greygoatsupply.com



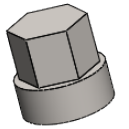
Step 1: Mark and Drill the holes.



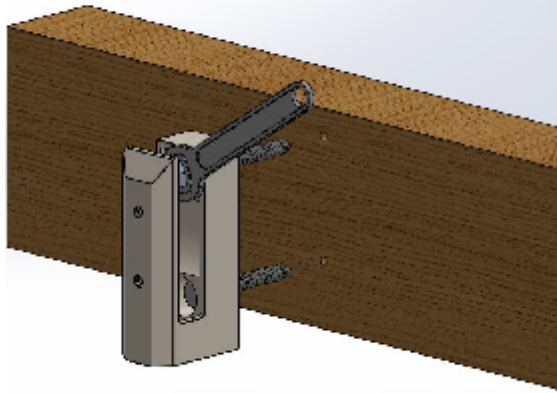
Step 2: Insert both Screws in Spigot.



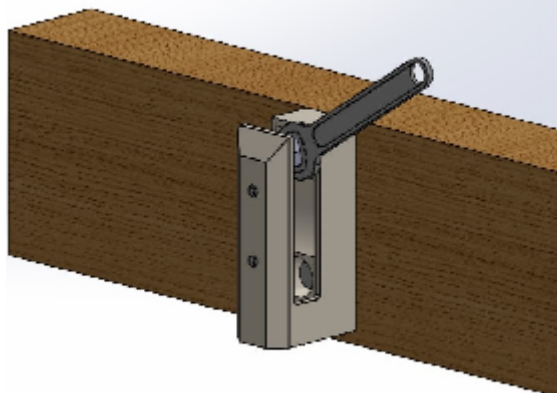
Step 3: Attach custom Spigot Tool on screw head.



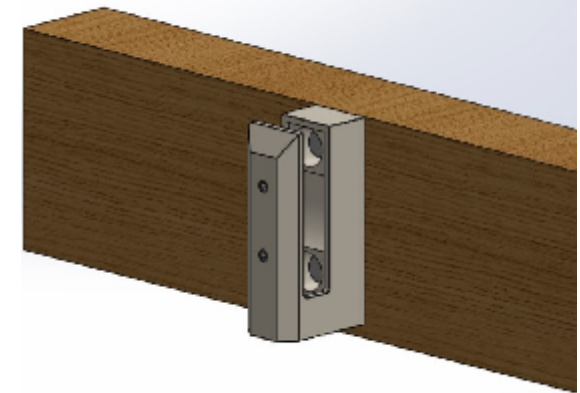
Spigot Tool



Step 4: Insert the Wrench on Spigot tool head.



Step 5: Tighten the custom Spigot tool with Wrench.



Step 6: Remove Spigot tool & Wrench.



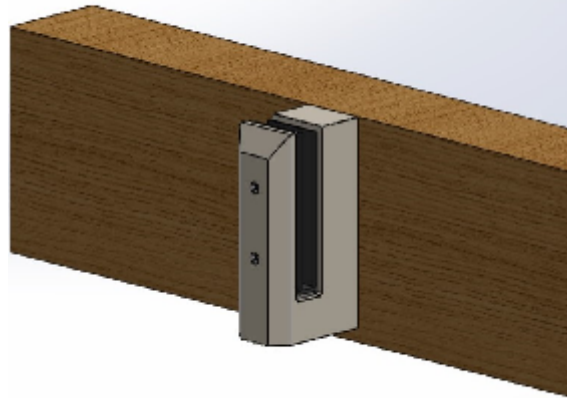
PROPRIETARY AND CONFIDENTIAL
THE INFORMATION CONTAINED IN THIS DRAWING IS THE SOLE PROPERTY OF GREY GOAT SUPPLY LTD ANY REPRODUCTION IN PART OR AS A WHOLE WITHOUT THE WRITTEN PERMISSION OF GREY GOAT SUPPLY LTD IS PROHIBITED

SIDE MOUNT SPIGOT

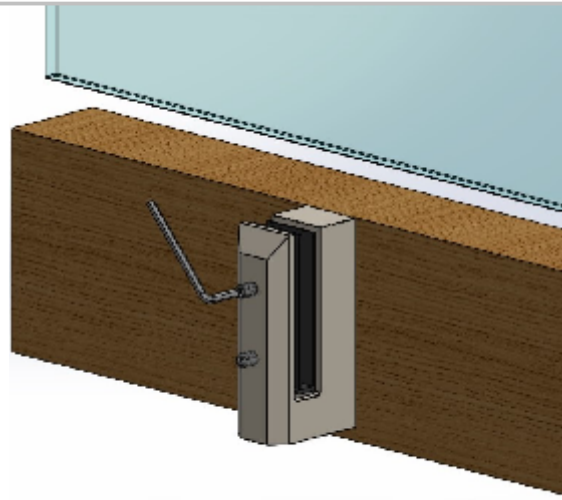
Duplex 2205 - Square
Installation Guide

VISIT OUR WEBSITE FOR MORE INFO
www.ggshardware.com

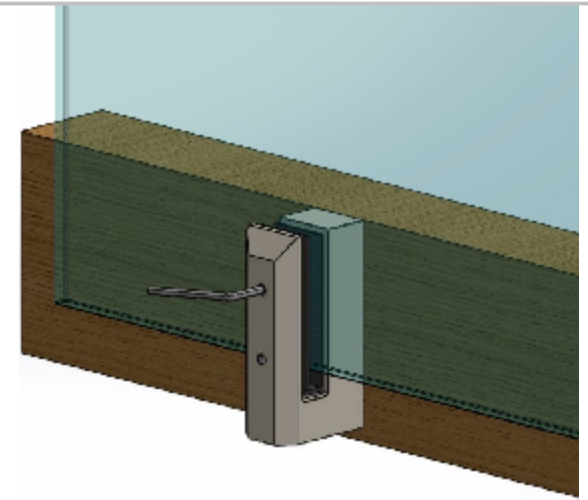
FOR INQUIRES PLEASE CONTACT
products@greygoatsupply.com



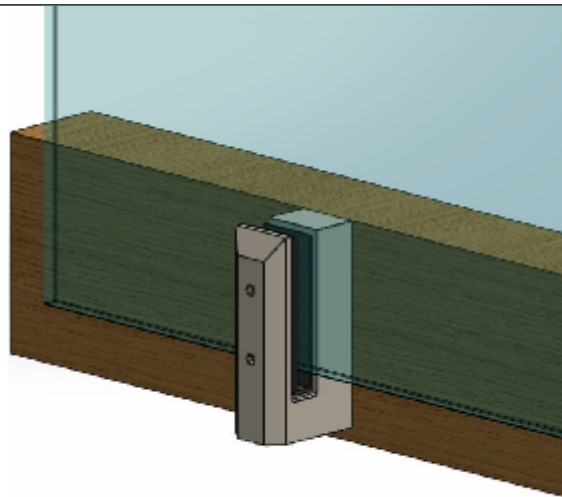
Step 7: Insert support and gaskets.



Step 8: Loosen Set Screws with L-key.



Step 9: Place glass in between gaskets gap and tighten both of the Set Screws.



Isometric View



Front View



Back View



PROPRIETARY AND CONFIDENTIAL
 THE INFORMATION CONTAINED IN THIS
 DRAWING IS THE SOLE PROPERTY OF GREY
 GOAT SUPPLY LTD ANY REPRODUCTION IN
 PART OR AS A WHOLE WITHOUT THE WRITTEN
 PERMISSION OF GREY GOAT SUPPLY LTD IS
 PROHIBITED

SIDE MOUNT SPIGOT

Duplex 2205 - Square
 Installation Guide

VISIT OUR WEBSITE FOR MORE INFO
www.ggshardware.com

FOR INQUIRES PLEASE CONTACT
products@greygoatsupply.com